

CORNER RECORD

Agency Index

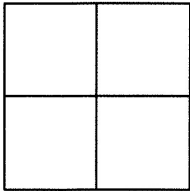
BK 113 PG 75

Document Number

CR 11686

City of EDEN TOWNSHIP

County of ALAMEDA, California

Brief Legal Description WELL MONUMENT LOCATED WITHIN BOSTON RD
IN FRONT OF 18125 BOSTON RD

CORNER TYPE

Government Corner ☐ Control ☒
Meander ☐ Property ☐
Rancho ☐ Other ☐

Date of Survey 6/26/18

COORDINATES (Optional)

N. 2075228 ± E. 6094790 ±

Elevation

Units Metric ☐ U.S. Survey Foot ☐

Horizontal Datum

Zone Epoch Date

Vertical Datum

☐ Complies with Public Resources Code §§8801-8819☐ Complies with Public Resources Code §§8890-8902PLS Act Ref: ☐ 8765(d)☒ 8771☐ 8773☐ Other:Corner/
Monument: ☒ Left as found☐ Established☐ Rebuilt☒ Pre-Construction☐ Found and tagged☐ Reestablished☒ Referenced☐ Post-Construction

Narrative of corner identified and monument as found, set, reset, replaced, or removed:

☐ See sheet #2 for description(s) :

FOUND BRASS DISK WITH NIPPLE IN MONUMENT WELL

FOUND AND SET POINTS AS SHOWN ON PAGE 2.

THIS POINT WAS REFERENCED PRIOR TO A CONSTRUCTION PROJECT IN THE VICINITY.

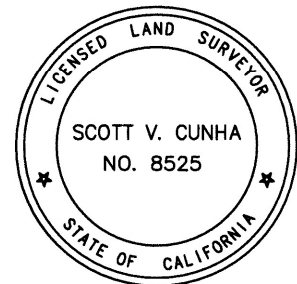
THE TIES SHOWN HEREON ARE FOR THE PURPOSE OF PERPETUATING FOUND MONUMENTATION.

NO CLAIM IS MADE AS TO THE RELATIONSHIP OF THE POINTS OR LINES SHOWN HEREON TO TRUE
BOUNDARY LOCATION.

SURVEYOR'S STATEMENT

This Corner Record was prepared by me or under my direction in conformance with

the Professional Land Surveyors' Act on JUNE 29, 2018.

Signed Scott V. Cunha P.L.S. or R.C.E. No. LS 8525
SCOTT V. CUNHA

COUNTY SURVEYOR'S STATEMENT

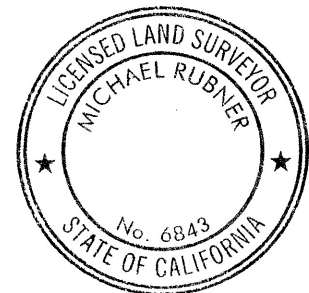
This Corner Record was received 3 JULY 2018

and examined and filed 13 SEPTEMBER 2018.

Signed Michael Rubner P.L.S. or R.C.E. No. 6843

Title COUNTY SURVEYOR

County Surveyor's Comment

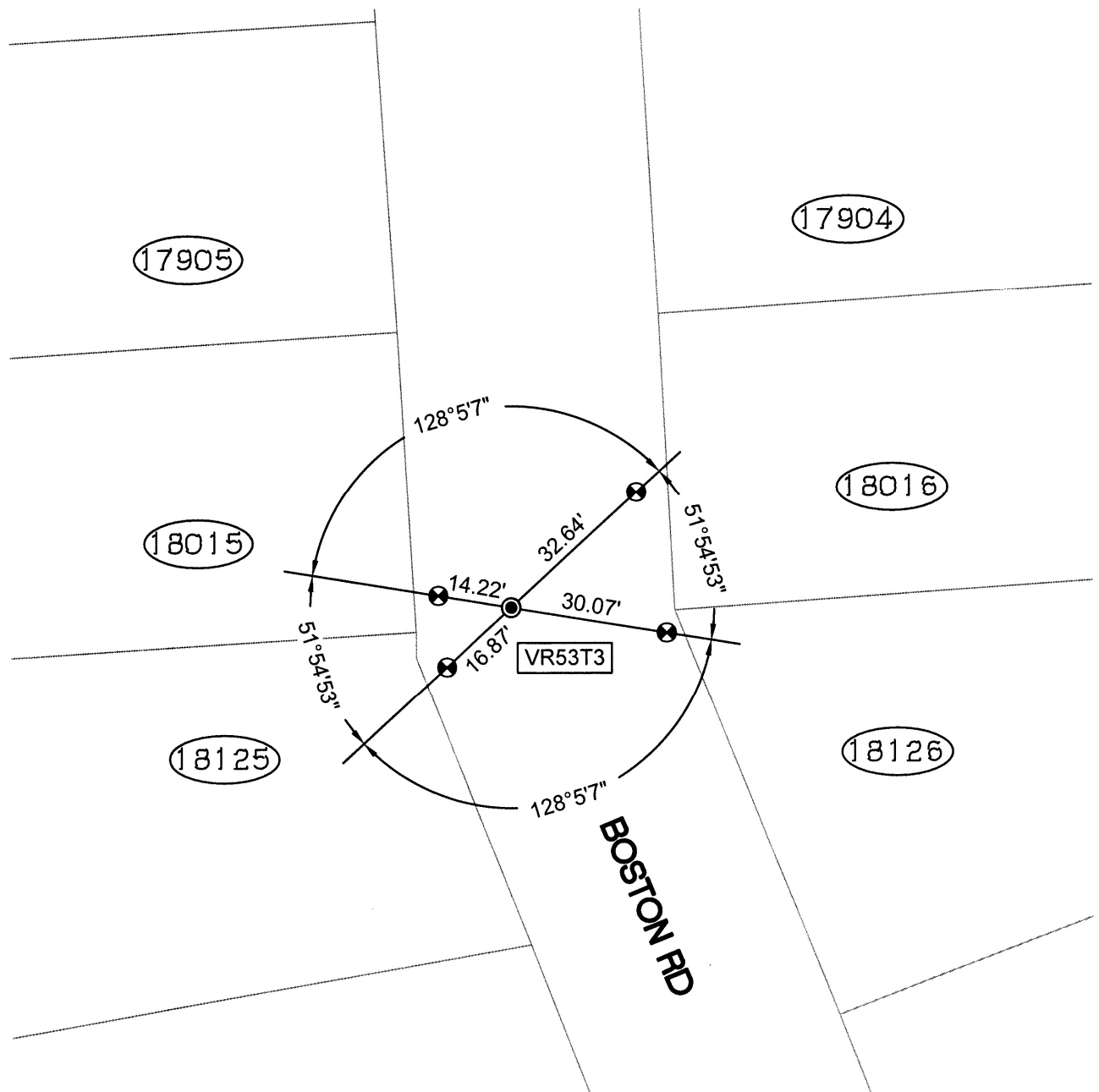


SPEC-2356-Pre

SCALE: 1"=30'

LEGEND

- FOUND BRASS DISC WITH NIPPLE IN MONUMENT WELL
- ⊗ SET CUT CROSS IN WALK
- AA### ALAMEDA COUNTY MONUMENT ID
- 19592 REFERENCE STREET ADDRESS



218070-Hampton-CR-3