

TRACT N^o 37-3

ASPEN SPRINGS RANCH

IN THE COUNTY OF MONO, CALIFORNIA.

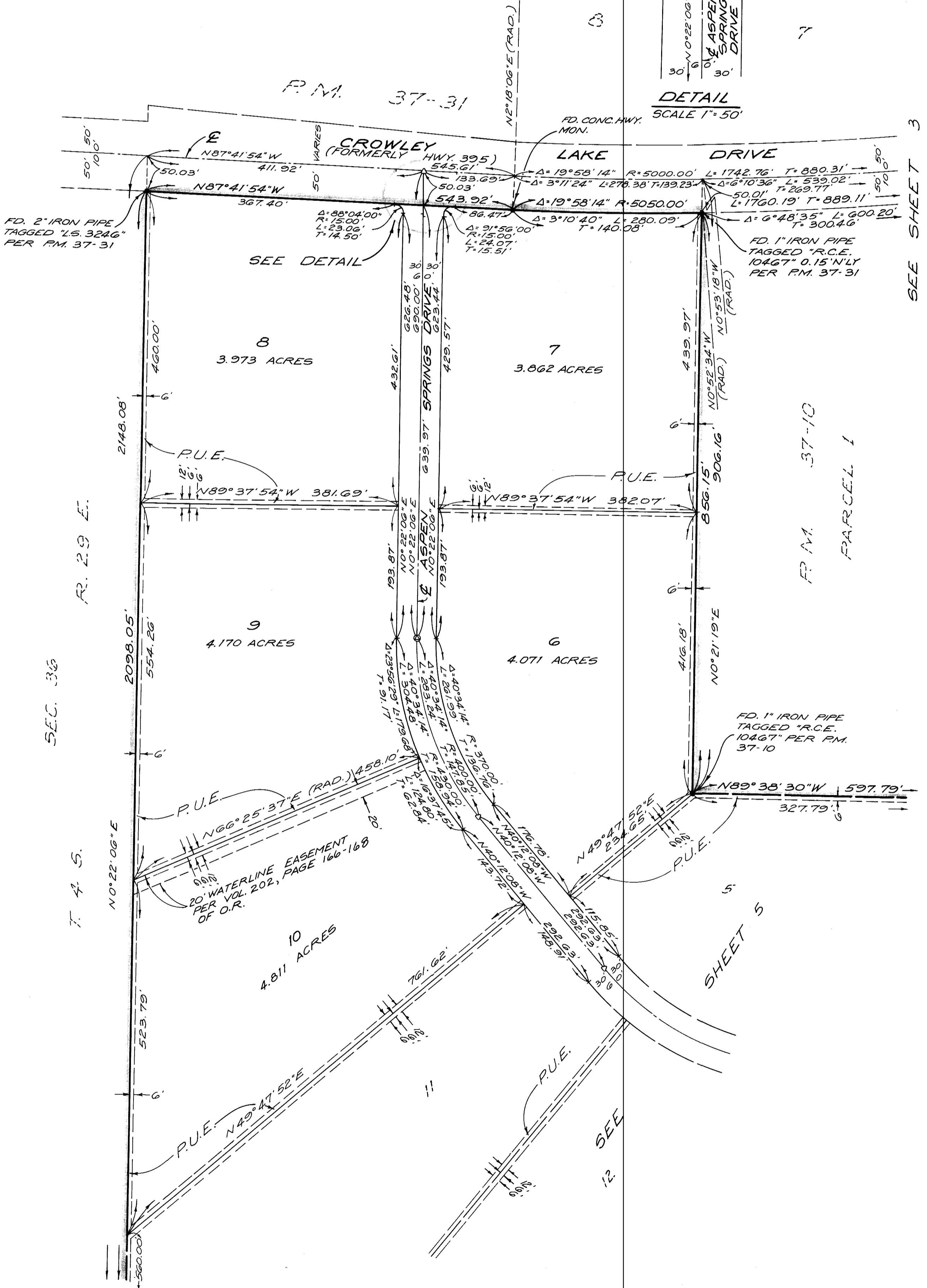
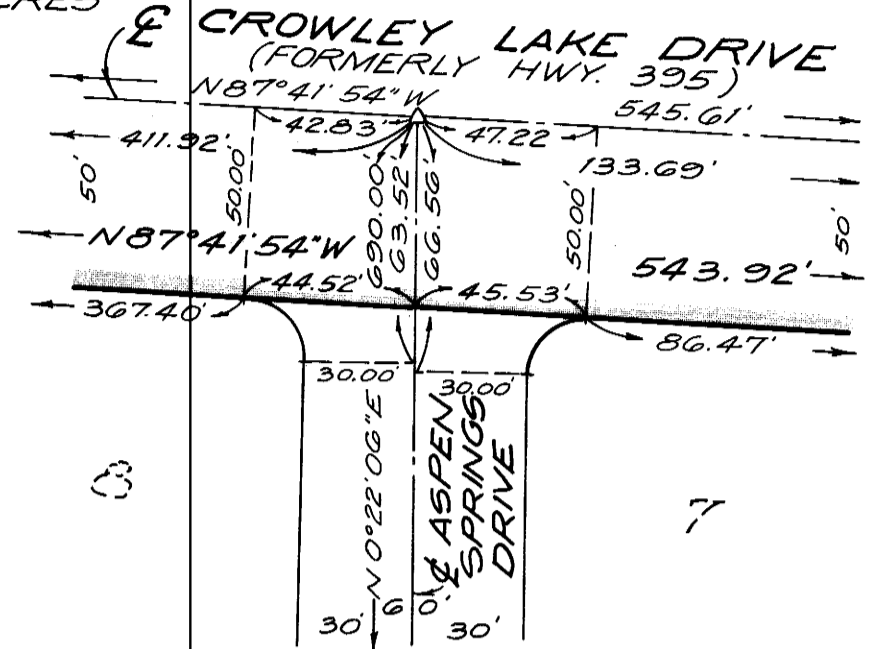
21 LOTS
MARCH 1975

WILLIAMSON & SCHMID, CIVIL ENGINEERS

STREET AREA = 5.259 ACRES

130.809 ACRES
GERALD F. OLDENBURG, L.S. 3246

NOTE:
FOR INDEX MAP AND VICINITY
MAP SEE SHEET 2
FOR BASIS OF BEARINGS AND
MONUMENT NOTES SEE SHEET 3.



Subd. Map - Vol. 8, Pg. 40-E