

PLAN NOTES
1. CONTRACTOR TO FIELD VERIFY ALL ASPECTS OF BUILDING SUCH THAT EXISTING BUILDING ELEMENTS TO REMAIN ARE NOT DAMAGED DURING CONSTRUCTION.

LEGEND

xx/sx.x

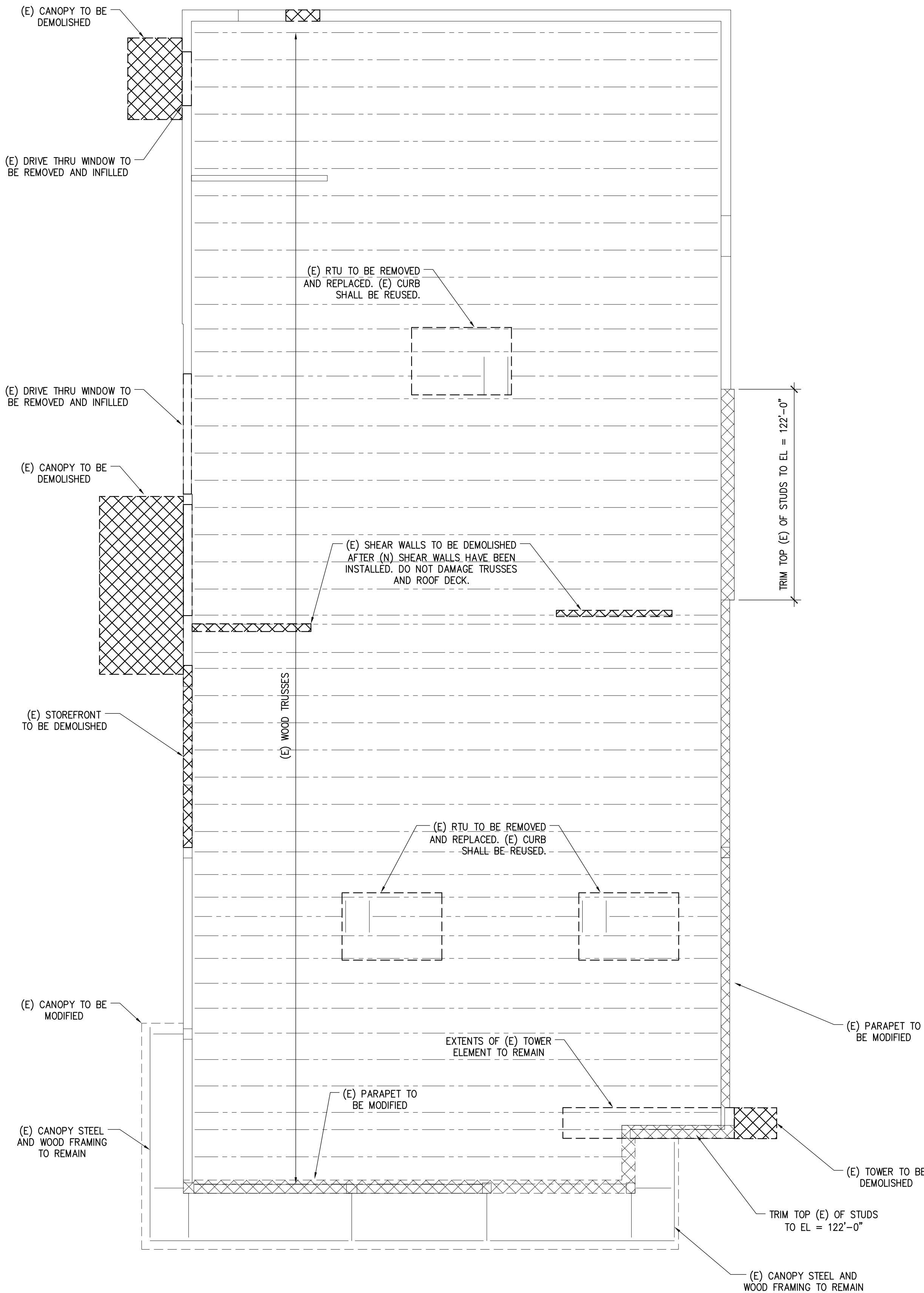
DETAIL NUMBER

SHEET NUMBER

INDICATES EXISTING

INDICATES EXISTING TO BE MODIFIED

INDICATES DEMO



PANDA EXPRESS, INC.
1683 Walnut Grove Ave.
Rosemead, California
91770
Telephone: 626.799.9898
Facsimile: 626.372.8288

All ideas, designs, arrangement and plans indicated or represented by this drawing are the property of Panda Express Inc. and were created for use on this specific project. None of these ideas, designs, arrangements or plans may be used by or disclosed to any person, firm, or corporation without the written permission of Panda Express Inc.

REVISIONS:	

ISSUE DATE:	
1st DEVELOPER REVIEW	07.15.19
2nd SITE PLAN SUBMITTAL	08.28.19
3rd SITE COMMENTS	09.05.19
4th ISSUE FOR PERMIT	10.01.19
5th ISSUE FOR BID	11.07.19

DRAWN BY: PM / KL / EA

PANDA PROJECT #: S8-20-D7163
ARCH PROJECT #: 19027

James F. Turner
Engineers, L.P.
Consulting Engineers
8340 Meadow Road, #160
Dulles, VA 22021
214.720.2900
Job #82208
Cal. #2A-5874-E

ALABAMA

REGISTERED

No. 14970

PROFESSIONAL

ENGINEER

JAMES F. TURNER

11/1/19

Heights Venture
ARCHITECTURE ✦ DESIGN

HOUSTON DALLAS
1111 North Loop West, Suite 800 5741 Legacy Drive, Suite 320
Houston, Texas 77008 Plano, Texas 75024
713.869.1103 V 972.490.7292 V

PANDA EXPRESS

2096 INTERSTATE DR.
OPELIKA, AL, 36801
3600 FSDT
TWW REMODEL

SD-101

FRAMING DEMO PLAN

TRUE WARM & WELCOME

BID ISSUE