

RECORD OF SURVEY

OF LAND OF
SANTACROCE BROS.

BEING A PORTION OF LOT 6 OF THE
PARR PARTITION

SANTA CLARA COUNTY, CALIFORNIA
MAY, 1962 SCALE, 1"=40'

SURVEYOR'S CERTIFICATE

This map correctly represents a survey made by me or under my direction in conformance with the requirements of Chapter 15 of Division 3 of the Business and Professions Code at the request of Lee M. Kown in May, 1962.

Raymond W. Fisher
RAYMOND W. FISHER
Registered Civil Engineer No. 483

COUNTY SURVEYOR'S CERTIFICATE

This map has been examined for conformance with the requirements of Chapter 15 of Division 3 of the Business and Professions Code this 23 day of July, 1962.

JAMES T. POTT, County Surveyor

by: *V. Gloringer*
Deputy

2230809

COUNTY RECORDER'S CERTIFICATE

Filed for record this 24th day of July, 1962, at 9:26 A.M. in Book 150 of Maps at Page 9, at the request of Raymond W. Fisher.

PAUL R. TEILH, County Recorder

\$5.00

by: *Donald E. Robinson*
Deputy

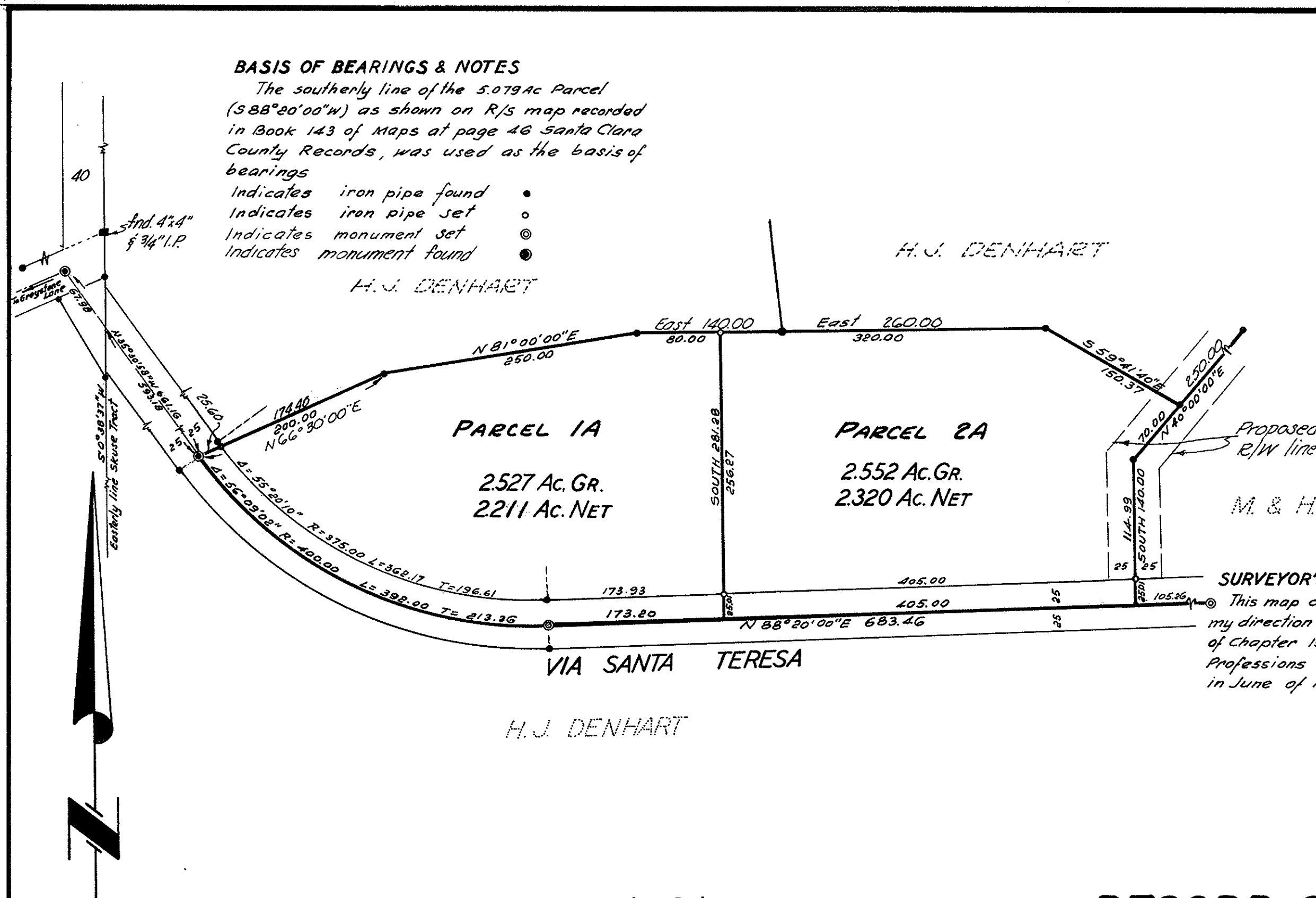
BASIS OF BEARINGS & NOTES

The bearing of the center line of the Santa Clara - Los Gatos Road (N 6° 15' E) as determined from the "Map of the Shelburne Addition," recorded in Book "U" of Maps at Page 35, Santa Clara County Records, was used as the basis of bearings shown on this map.

All distances and dimensions are shown in feet and decimals thereof.

- Indicates Iron Pipe Found
- Indicates Iron Pipe Set

T.B.K. Pg. 50 Job No. 4177



BASIS OF BEARINGS & NOTES

The southerly line of the 5.0794c Parcel (S 88° 20' 00" W) as shown on R/S map recorded in Book 143 of Maps at page 46 Santa Clara County Records, was used as the basis of bearings

- Indicates iron pipe found
- Indicates iron pipe set
- Indicates monument set
- Indicates monument found

H. J. DENHART

H. J. DENHART

M. & H. IBSEN

SURVEYOR'S CERTIFICATE

This map correctly represents a survey made under my direction in conformance with the requirements of Chapter 15 of Division 3 of the Business and Professions Code at the request of David H. Shears in June of 1962.

Milo S. Lacy
MILO S. LACY
Reg. Civil Engr. # 8097

COUNTY SURVEYOR'S CERTIFICATE

This map has been examined for conformance with the requirements of Chapter 15 Division 3 of the Business and Professions Code this 23 day of July, 1962

JAMES T. POTT
County Surveyor

by deputy *V. Gloringer*

COUNTY RECORDER'S CERTIFICATE

Filed for record this 24th day of July, 1962 at 9:26 A.M. in Book 150 of Maps at Page 9, at the request of Milo S. Lacy

\$5.00

PAUL R. TEILH
County Recorder

by deputy *Donald E. Robinson*

RECORD OF SURVEY

PTN OF LANDS OF D.H. & D.M. SHEARS

BEING A PORTION OF PUEBLO TRACT NO. 3
SANTA CLARA COUNTY

MISSION ENGINEERS

1555 LAFAYETTE STREET SANTA CLARA, CALIF.

MILO S. LACY CIVIL ENGINEER

SCALE: 1"=100' JUNE 1962

JOB NO. CO 651 DWG. NOM-2514