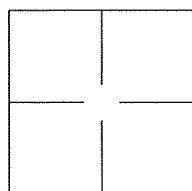


CORNER RECORD

Agency Index BK 140 PG 18Document Number CR 14627City of UNINCORPORATED AREACounty of ALAMEDA, CaliforniaBrief Legal Description ALAMEDA COUNTY MONUMENT ZQ67F4

CORNER TYPE

Government Corner ☐ Control ☐
Meander ☐ Property ☐
Rancho ☐ Other ☒

Date of Survey 2020-08-03

COORDINATES (Optional)

N. _____ E. _____

Elevation _____

Units Metric ☐ U.S. Survey Foot ☐

Horizontal Datum _____

Zone _____ Epoch Date _____

Vertical Datum: _____

☐ Complies with Public Resources Code §§8801-8819☐ Complies with Public Resources Code §§8890-8902PLS Act Ref.: ☐ 8765(d) ☒ 8771 ☐ 8773

Other: _____

Corner/Monument: ☒ Left as found ☐ Established ☐ Rebuilt ☒ Pre-Construction
☐ Found and tagged ☐ Reestablished ☒ Referenced ☐ Post-Construction

Narrative of corner identified and monument as found and set or reset:

☒ See sheet #2 for description(s):

ALAMEDA COUNTY MONUMENT ZQ67F4

SURVEYOR'S STATEMENT

This Corner Record was prepared by me or under my direction in conformance with
the Professional Land Surveyor's Act on 30 November, 2020.

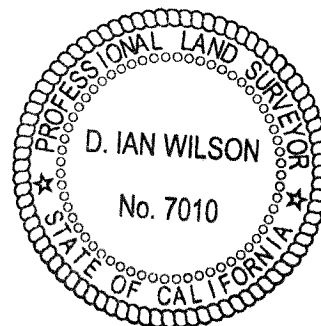
Signed [Signature] P.L.S. or R.C.E. No.: 8040

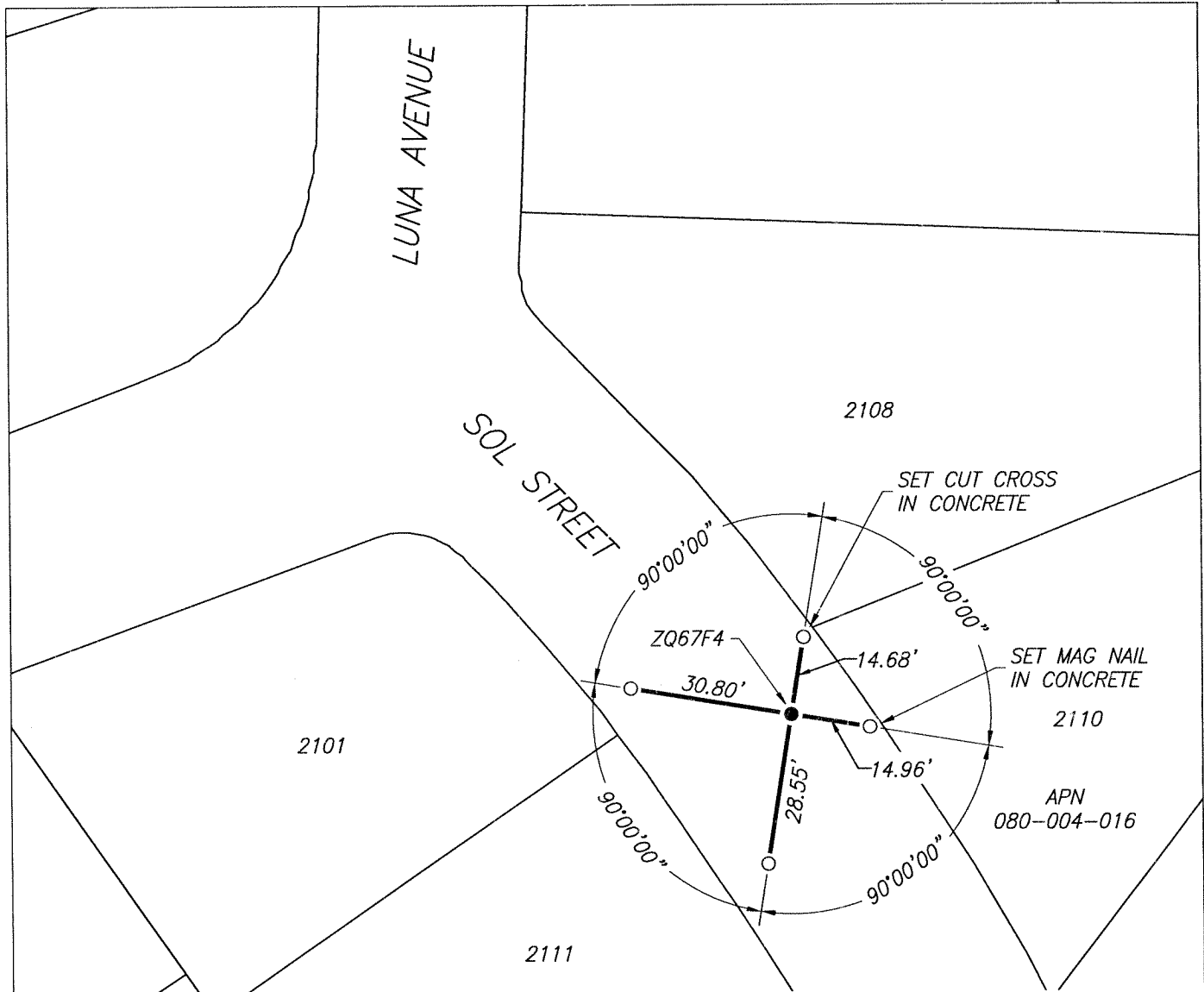
COUNTY SURVEYOR'S STATEMENT

This Corner Record was received _____, _____ and examined
and filed AUG 14 2021.

Signed D. Ian Wilson P.L.S. or R.C.E. No.: 7010Title ALAMEDA COUNTY SURVEYOR

County Surveyor's Comment _____





LEGEND

- FOUND 2.5" BRASS DISK WITH 1/8" NIPPLE, IN MONUMENT WELL, STAMPED "ALAMEDA COUNTY SURVEYOR" "SOL PI OZ", PER (A)

- SET MAG NAIL IN ASPHALT

2110 REFERENCE STREET ADDRESS

APN ASSESSORS PARCEL NUMBER

SCALE 1" = 30'

REFERENCES

- (A) CORNER RECORD 1676, FILED FOR RECORD ON DECEMBER 01, 2003, IN BOOK 19 OF CORNER RECORDS, AT PAGE 10, ALAMEDA COUNTY RECORDS