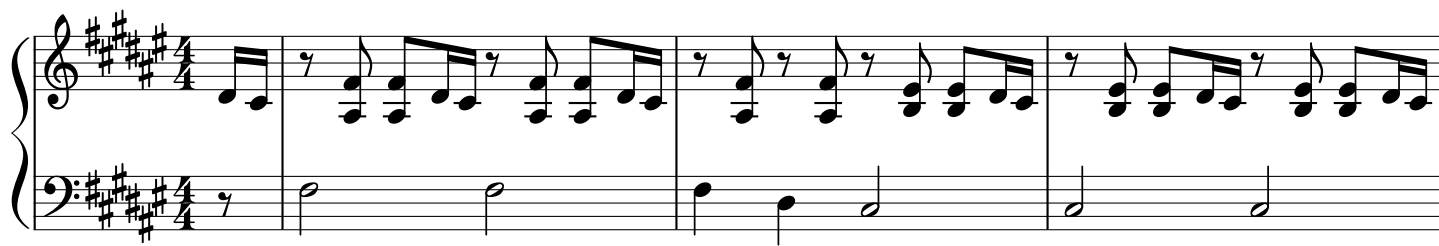
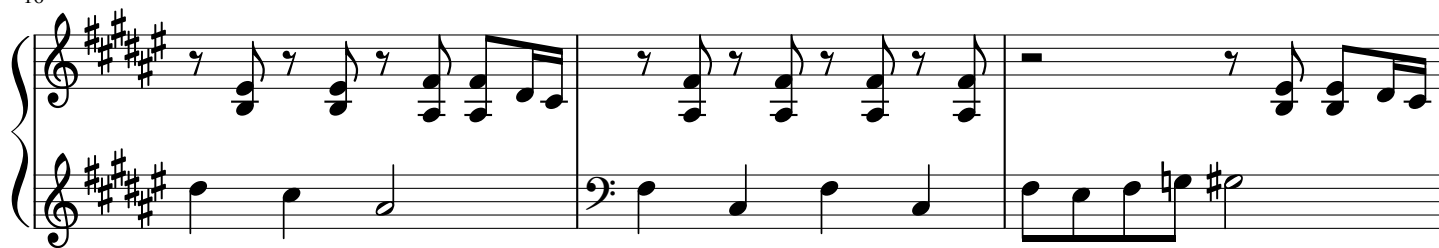


Beyer No. 8

♩ = 140



16



19



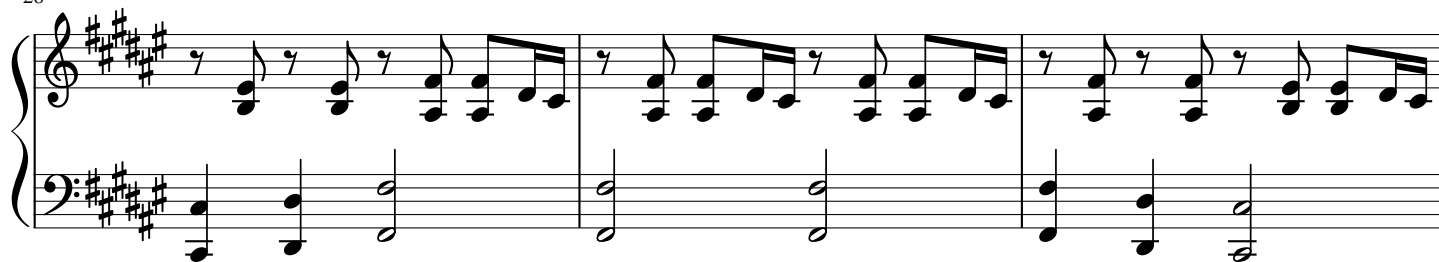
22



25



28



31



34

Measures 34-36 of a musical score in E major (four sharps). The right hand features a rhythmic pattern of eighth and sixteenth notes, while the left hand provides a harmonic accompaniment with chords and single notes.

37

Measures 37-39 of the musical score. The right hand continues with eighth and sixteenth note patterns, and the left hand maintains the harmonic support with chords and single notes.

40

Measures 40-43 of the musical score. Measure 42 features a whole rest in the right hand. The left hand includes a bass clef in measure 41 and a complex chordal passage in measure 42.

44

Measures 44-46 of the musical score. Measure 44 begins with a whole rest in the right hand. The left hand continues with a complex chordal passage in measure 44 and a melodic line in measure 45.

47

Measures 47-48 of the musical score. Measure 47 features a whole rest in the right hand. The left hand continues with a complex chordal passage in measure 47 and a melodic line in measure 48.