

# CORNER RECORD

Document Number

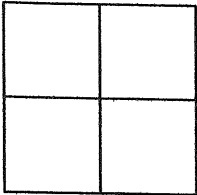
CR 3221

City of OAKLAND

County of ALAMEDA

California

Brief Legal Description WELL MONUMENT LOCATED WITHIN THE INTERSECTION OF  
OAKWOOD DRIVE AND SOBRANTE ROAD.



## CORNER RECORD

Government Corner ☐

Meander ☐

Rancho ☐

Date of Survey 11/21/2007

Control ☒

Property ☐

Other ☐

## COORDINATES (Optional)

N. \_\_\_\_\_

E. \_\_\_\_\_

Zone \_\_\_\_\_ Datum \_\_\_\_\_

Elev. \_\_\_\_\_

Corner — Left as found ☒ Found and tagged ☐ Established ☐ Reestablished ☐ Rebuilt ☐

Identification and type of corner found: Evidence used to identify or procedure used to establish of reestablish the corner:  
FOUND BRASS PIN IN WELL MONUMENT WITHIN THE INTERSECTION OF

OAKWOOD DRIVE AND SOBRANTE ROAD.

AS SHOWN ON OAKLAND MONUMENT MAP, PAGE 316.

THIS POINT WAS REFERENCED PRIOR TO A CONSTRUCTION  
PROJECT IN THE VICINITY

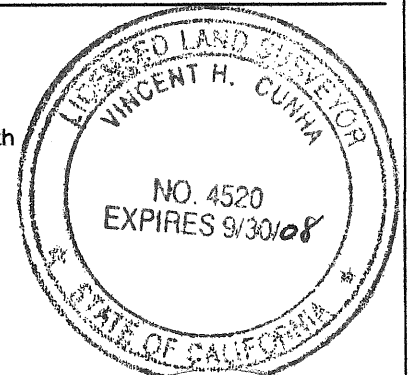
A description of the physical condition of the monument as found and as set or reset:

FOUND AND SET POINTS AS SHOWN ON PAGE 2.

## SURVEYOR'S STATEMENT

This Corner Record was prepared by me or under my direction in conformance with  
the Land Surveyors' Act on NOVEMBER 23, 20 07.

Signed Vincent H. Cunha L.S. Number LS 4520  
VINCENT H. CUNHA



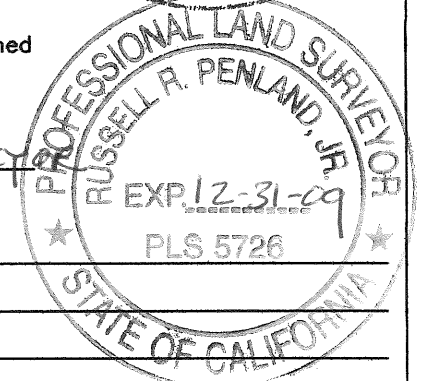
## COUNTY SURVEYOR'S STATEMENT

This Corner Record was received 1-10-2008 and examined

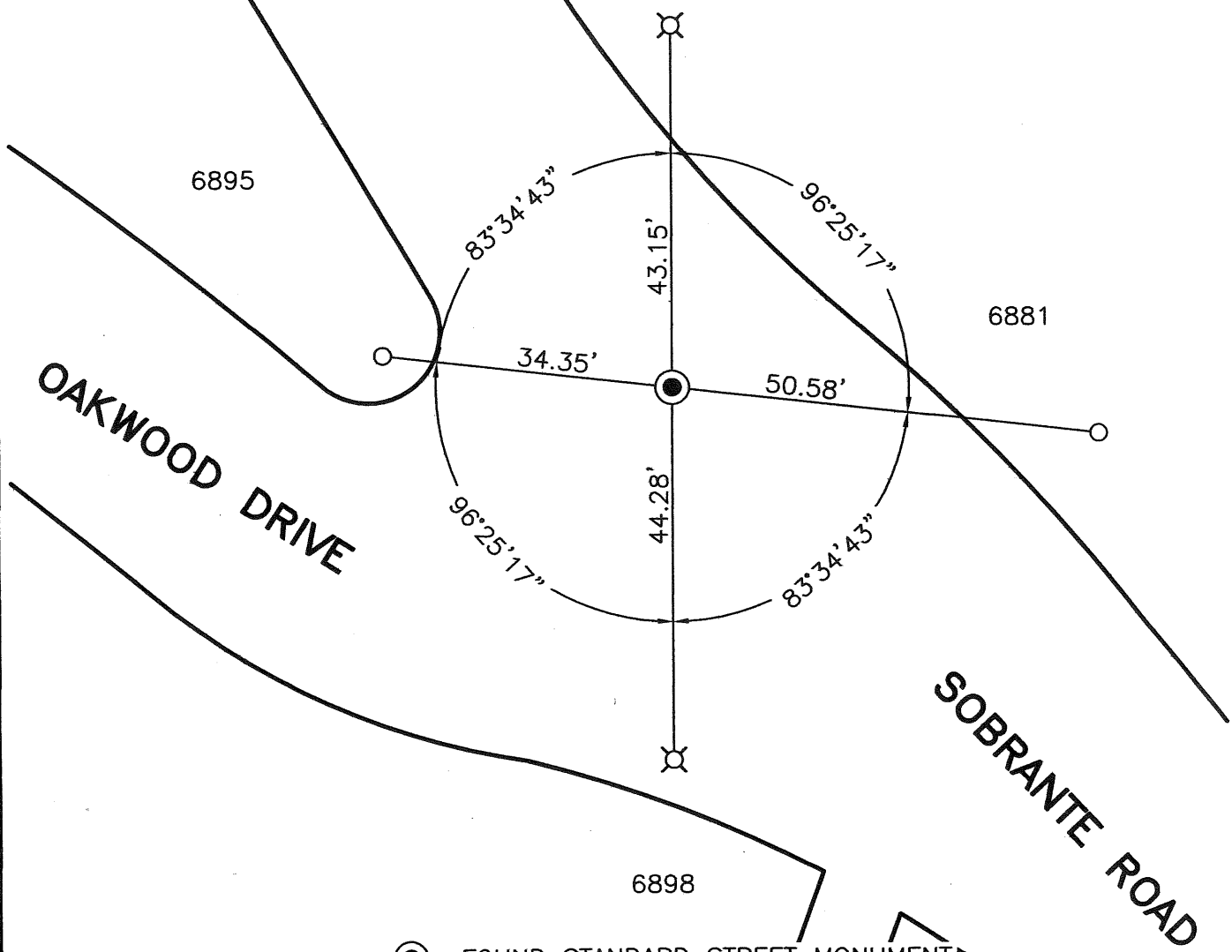
and filed 4-7-2008.

Signed Russell R. Penland, Jr. Title County Surveyor

County Surveyor's Comment



SCALE : 1"=20'



- FOUND STANDARD STREET MONUMENT
- ⊗ SET NAIL AND TAG LS4520
- SET 1/2" REBAR & CAP LS4520