

This map correctly represents a survey made by me in conformance with the requirements of Chapter 15 of Division 3 of the Business and Professions Code May 1961, at the request of Mrs C.M. Schmidt.

*J. A. Lued*

R.C.E. 5521

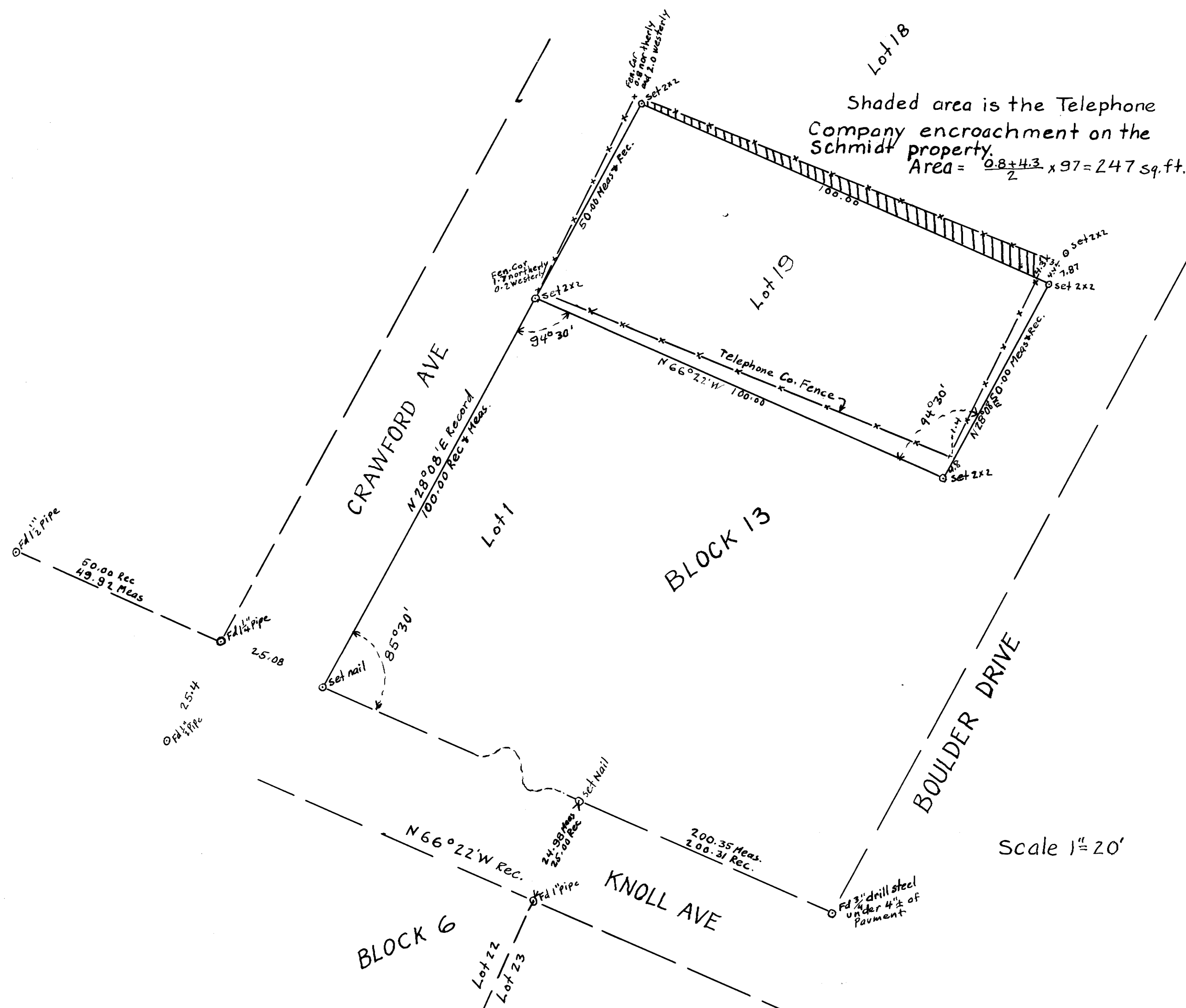
This map has been examined by me for conformance with the requirements of Chapter 15 of Division 3 of the Business and Professions Code this \_\_\_\_\_ day of \_\_\_\_\_ 1961.

\_\_\_\_\_  
Mono County Surveyor

1961

Filed for record this 6<sup>th</sup> day of June 1961  
at 4:20 PM in Book 2 of Maps at Page 70 at the  
request of J.H. Creed

*Just Delaney*  
Mono County Recorder, Bridgeport, California.



# RECORD OF SURVEY MAP

Being the map of a survey  
in Block 13 of Silver Lake Pines  
Tract No 1, in June Lake Village,  
Mono County, California.