

# CORNER RECORD

Agency Index \_\_\_\_\_

Document Number

CR 9992

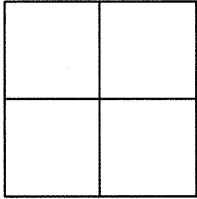
City of EDEN TOWNSHIP

County of

ALAMEDA

, California

Brief Legal Description

BRASS DISC MONUMENT LOCATED WITHIN THE INTERSECTION OF  
OLD FAIRVIEW AVENUE AND SONIA VIEW COURT.

## CORNER TYPE

Government Corner ☐ Control ☒  
 Meander ☐ Property ☐  
 Rancho ☐ Other ☐

Date of Survey 5/11/17

## COORDINATES (Optional)

N. 2071901 E. 6115266

Elevation \_\_\_\_\_

Units Metric ☐ U.S. Survey Foot ☒

Horizontal Datum \_\_\_\_\_

Zone \_\_\_\_\_ Epoch Date \_\_\_\_\_

Vertical Datum \_\_\_\_\_

☐ Complies with Public Resources Code §§8801-8819☐ Complies with Public Resources Code §§8890-8902

PLS Act Ref:

☐ 8765(d)☒ 8771☐ 8773☐ Other:Corner/  
Monument:☒ Left as found☐ Established☐ Rebuilt☐ Pre-Construction☐ Found and tagged☐ Reestablished☐ Referenced☒ Post-Construction

Narrative of corner identified and monument as found, set, reset, replaced, or removed:

☒ See sheet #2 for description(s) : SEE CR 8828

FOUND BRASS DISC WITH PUNCH IN MONUMENT WELL.

FOUND AND SET POINTS AS SHOWN ON PAGE 2.

THIS POINT WAS FOUND IN GOOD CONDITION AFTER A CONSTRUCTION PROJECT IN THE VICINITY.

THE TIES SHOWN HEREON ARE FOR THE PURPOSE OF PERPETUATING FOUND MONUMENTATION.  
 NO CLAIM IS MADE AS TO THE RELATIONSHIP OF THE POINTS OR LINES SHOWN HEREON TO TRUE  
 BOUNDARY LOCATION.

## SURVEYOR'S STATEMENT

This Corner Record was prepared by me or under my direction in conformance with

the Professional Land Surveyors Act of

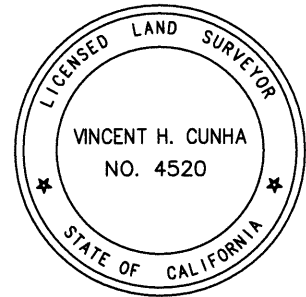
MAY 12, 2017

Signed

P.L.S. or R.C.E. No.

LS 4520

VINCENT H. CUNHA



## COUNTY SURVEYOR'S STATEMENT

This Corner Record was received

22 MAY, 2017

and examined and filed

29 JUNE, 2017

Signed

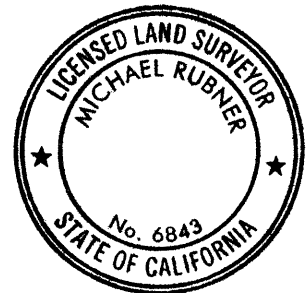
P.L.S. or R.C.E. No.

6843

Title

COUNTY SURVEYOR

County Surveyor's Comment

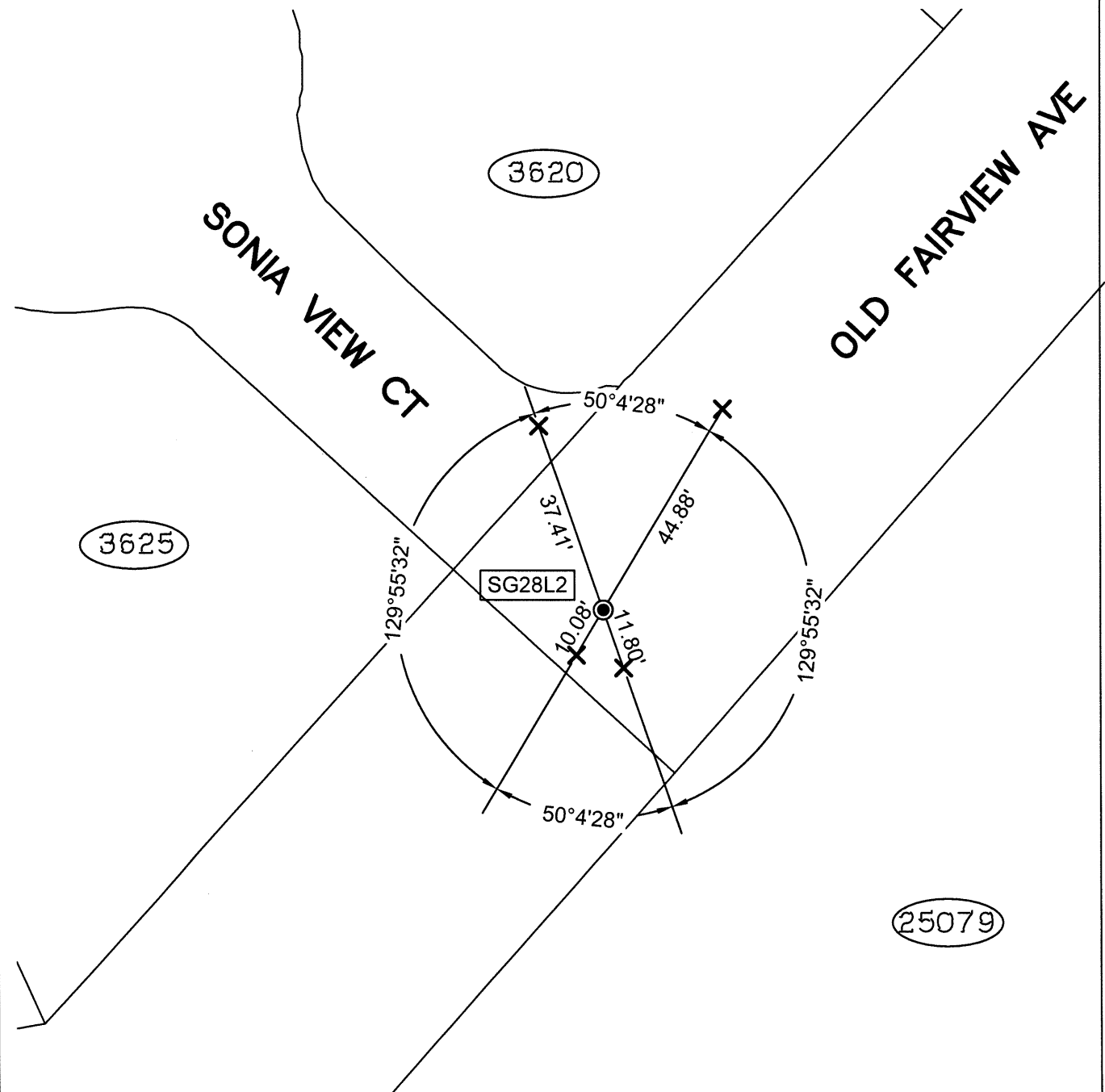


SPEC-2303-POST

SCALE: 1"=30'

## LEGEND

- FOUND BRASS DISC WITH PUNCH IN MONUMENT WELL
- ⊗ FOUND CUT CROSS IN WALK
- ✕ FOUND CUT CROSS IN CURB
- ✕ FOUND MAG AND SHINER
- FOUND REBAR & CAP STAMPED "CEI RP"
- AA### ALAMEDA COUNTY MONUMENT ID
- 19592 REFERENCE STREET ADDRESS



216129-Fairview-CR02 Post