

PARCEL MAP

FOR

LOT LINE ADJUSTMENT

OF LOTS 7, 8 & 9

HAWKSVIEW SUBDIVISION

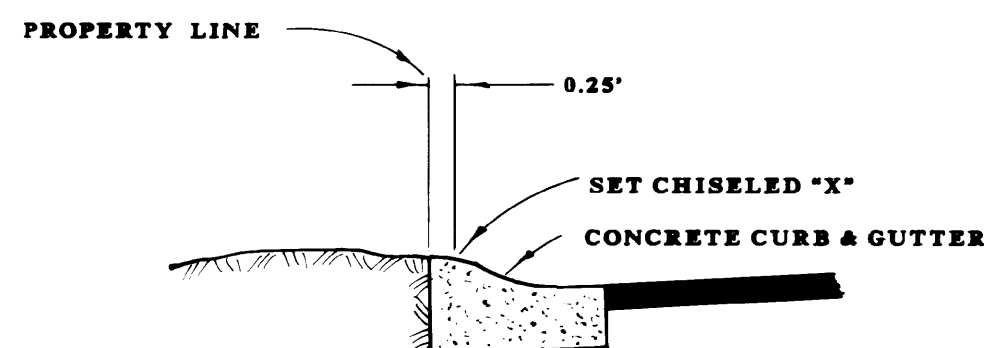
BEING A PORTION OF THE S.W. 1/4 OF SECTION 2,
T. 7 N., R. 10 E., M.D.M., IN THE CITY OF PLYMOUTH
AMADOR COUNTY, CALIFORNIA
SEPTEMBER, 1995

PREPARED FOR :

READY MORTGAGE CO.
1320 WILLOW PASS ROAD
SUITE 530
CONCORD, CA 94520
(510) 682-5200

PREPARED BY :

SIERRA ENGINEERING ASSOCIATES, LTD.
130 EAST ST. CHARLES STREET
P.O. BOX 279
SAN ANDREAS, CALIFORNIA 95249



RIGHT-OF-WAY MONUMENTATION DETAIL

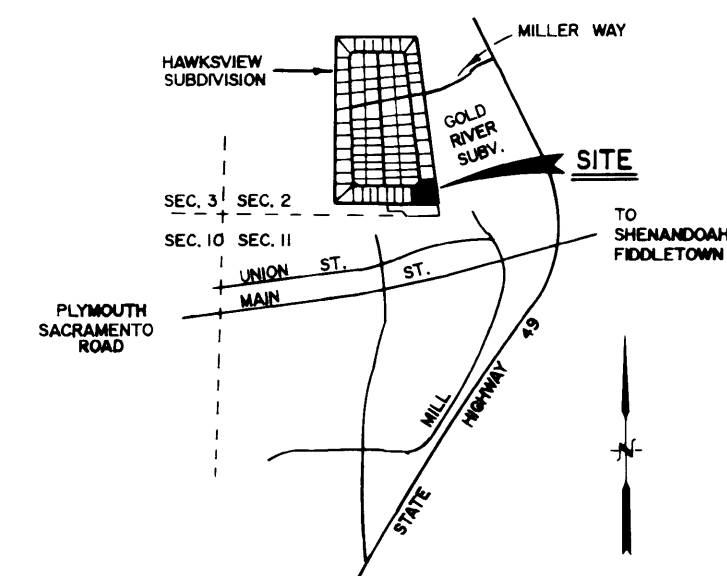
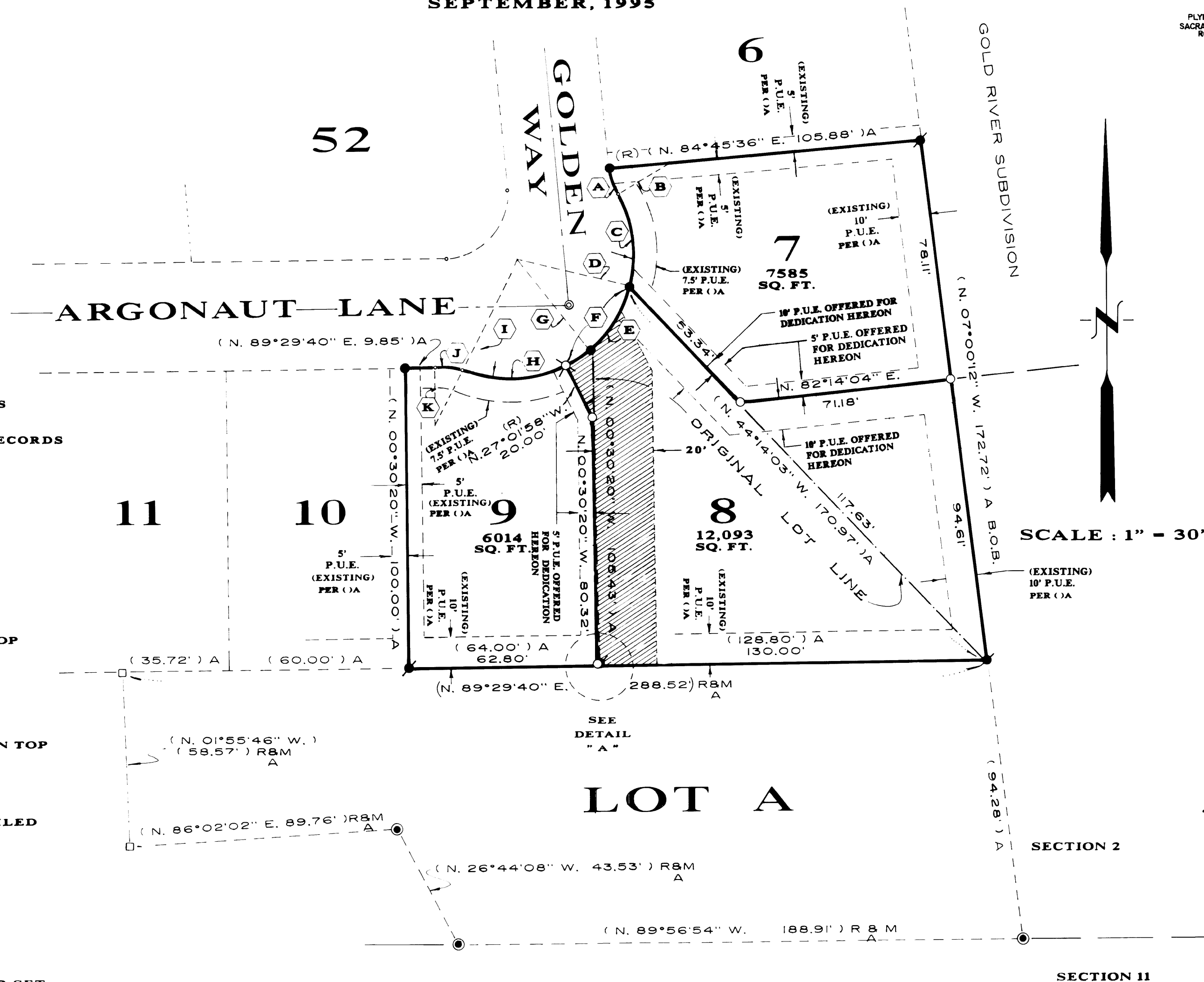
NO SCALE

BASIS OF BEARING :

THE BASIS OF BEARINGS OF THIS PARCEL MAP IS THE LINE BETWEEN FOUND MONUMENTS SHOWN HEREON AS N 07°00'12" W AND IS THE SAME AS CALCULATED FROM THAT CERTAIN PLAT OF HAWKSVIEW, FILED IN BOOK 6 OF SUBDIVISION MAPS AT PAGE 73, AMADOR COUNTY RECORDS

LEGEND :

- (R) DENOTES RADIAL BEARING.
- SET 3/4" REBAR TAGGED L.S. 4626
- ⊗ SET REFERENCE POINT, CHISELED CROSS ON TOP OF CURB, A DISTANCE OF 0.25' FROM PROPERTY LINE. SEE RIGHT-OF-WAY MONUMENTATION DETAIL, THIS SHEET.
- ⊙ FOUND 3/4" C.I.P. STAMPED L.S. 4130, 1984, AND 6 - SUBS - 73.
- FOUND 3/4" REBAR, TAGGED L.S. 4626, PER 6 - SUBS - 73.
- FOUND REFERENCE POINT, CHISELED CROSS ON TOP OF CURB, A DISTANCE OF 0.25' FROM PROPERTY LINE. SEE RIGHT-OF-WAY MONUMENTATION DETAIL, THIS SHEET PER 6-SUBS-73
- ⊙ FOUND RAILROAD SPIKE IN PAVEMENT AS PER 6 - SUBS - 73.
- (A) RECORD DATA AS PER PLAT OF HAWKSVIEW, FILED IN BOOK 6 OF SUBDIVISION MAPS AT PAGE 73, AMADOR COUNTY RECORDS.
- ▨ 20 FT. INGRESS/EGRESS EASEMENT TO LOT "A" AND P.U.E. (PUBLIC UTILITY EASEMENT) OFFERED FOR DEDICATION HEREON.
- ORIGINAL LOT LINE PER 6-SUBS-73.
- P.U.E. PUBLIC UTILITY EASEMENT
- R&M RECORD IS THE SAME AS MEASURED.
- CALCULATED POINT ONLY, NOTHING FOUND OR SET.

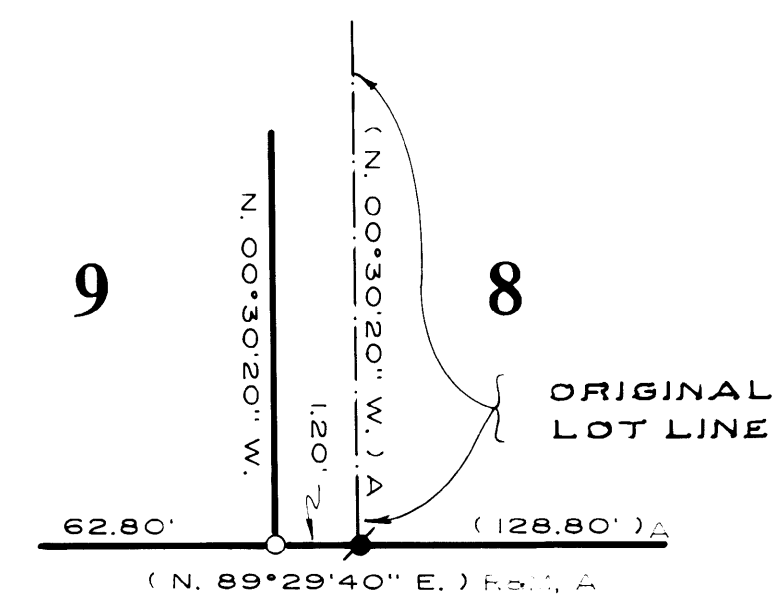


VICINITY MAP
NO SCALE

MISC. DIMENSIONS

- A CH - (N.18°09'39"W. 8.94', R-20.00') A
- B (R) - (N.58°55'05"E.) A
- C CH - (N.08°13'16"W. 31.08', R-40.00') A
- D (R) - (N.75°21'38"W.) A
- E CH - (N.29°51'21"E. 21.00', R-40.00') A
- F CH - (N.38°48'12"E. 32.75', R-40.00') A
- G (R) - (N.44°55'39"W.) A
- H CH - (N.89°09'06"E. 35.30', R-40.00') A
- I (R) - (N.25°20'11"E.) A
- J CH - (N.77°35'05"W. 8.94', R-20.00') A
- K (R) - (N.00°30'20"W.) A

SCALE : 1" = 30'



DETAIL "A"

NOT TO SCALE