

# CORNER RECORD

Agency Index

BK 151 PG 93

Document Number CR 16463

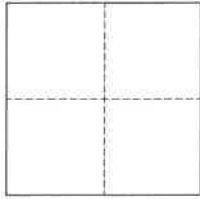
City of Oakland

County of Alameda, California

Brief Legal Description Monument at Intersection of Sunkist Drive and Hillmont Drive

## CORNER TYPE

## COORDINATES (Optional)



- ☐ Government Corner ☒ Control  
☐ Meander ☐ Property  
☐ Rancho ☐ Other

Date of Survey January 23, 2023

N. \_\_\_\_\_ E. \_\_\_\_\_

Elevation \_\_\_\_\_

Units ☐ Metric ☐ U.S. Survey Foot

Horizontal Datum \_\_\_\_\_

Zone \_\_\_\_\_ Epoch Date \_\_\_\_\_

Vertical Datum \_\_\_\_\_

☐ Complies with Public Resources Code §§8801-8819☐ Complies with Public Resources Code §§8890-8902PLS Act Ref.: ☐ 8765(d) ☒ 8771 ☐ 8773 ☐ Other:

Corner/  
Monument: ☒ Left as found ☐ Established ☐ Rebuilt ☒ Pre-Construction  
☐ Found and tagged ☐ Reestablished ☒ Referenced ☐ Post-Construction

Narrative of corner identified and monument as found, set, reset, replaced, or removed:

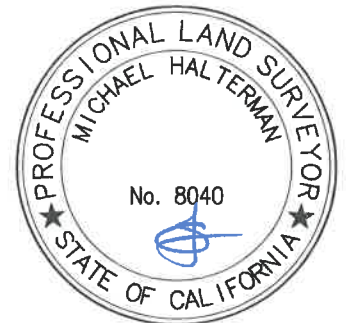
☒ See sheet #2 for description(s):

This Corner Record is being filed to reference the position of an existing monument, prior to a sanitary sewer rehabilitation project.  
This document is for preservation purposes only, and no attempt was made to determine the relationship to property, centerline,  
or right-of-way lines.

## SURVEYOR'S STATEMENT

This Corner Record was prepared by me or under my direction in conformance with

the Professional Land Surveyors' Act on March 8, 2023

Signed  P.L.S. or R.C.E. No. 8040

## COUNTY SURVEYOR'S STATEMENT

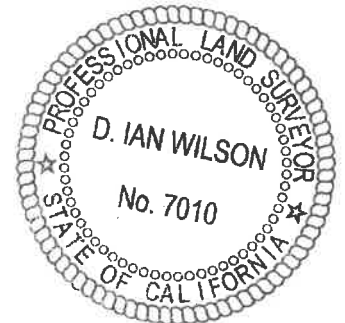
This Corner Record was received \_\_\_\_\_

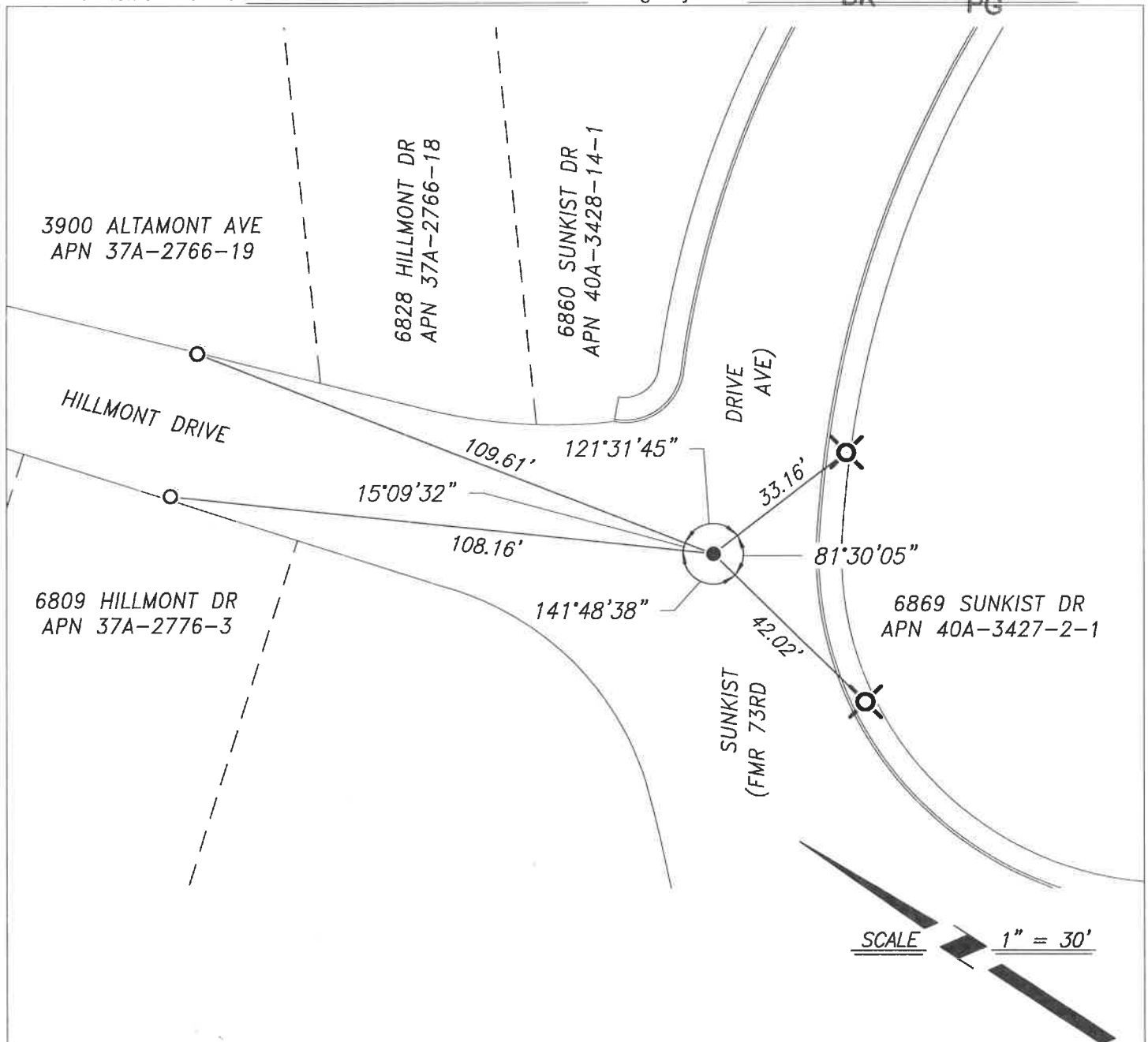
and examined and filed MAR 30 2023

Signed  P.L.S. or R.C.E. No. 7010

Title ALAMEDA COUNTY SURVEYOR

County Surveyor's Comment





## REFERENCE

(A) MAP OF LEONA HEIGHTS ADDITION IN THE CITY OF OAKLAND, FILED ON FEBRUARY 27, 1925, IN BOOK 4 OF MAPS, PAGE 64, ALAMEDA COUNTY RECORDS.

## LEGEND

- FOUND MONUMENT, NAIL IN CONCRETE
- MAG NAIL IN PAVEMENT AS REFERENCE POINT
- ✕ CUT CROSS ON CONCRETE AS REFERENCE POINT

## NOTES

1. ALL REFERENCES ARE ALAMEDA COUNTY RECORDS