

SECTIONS 21 & 28

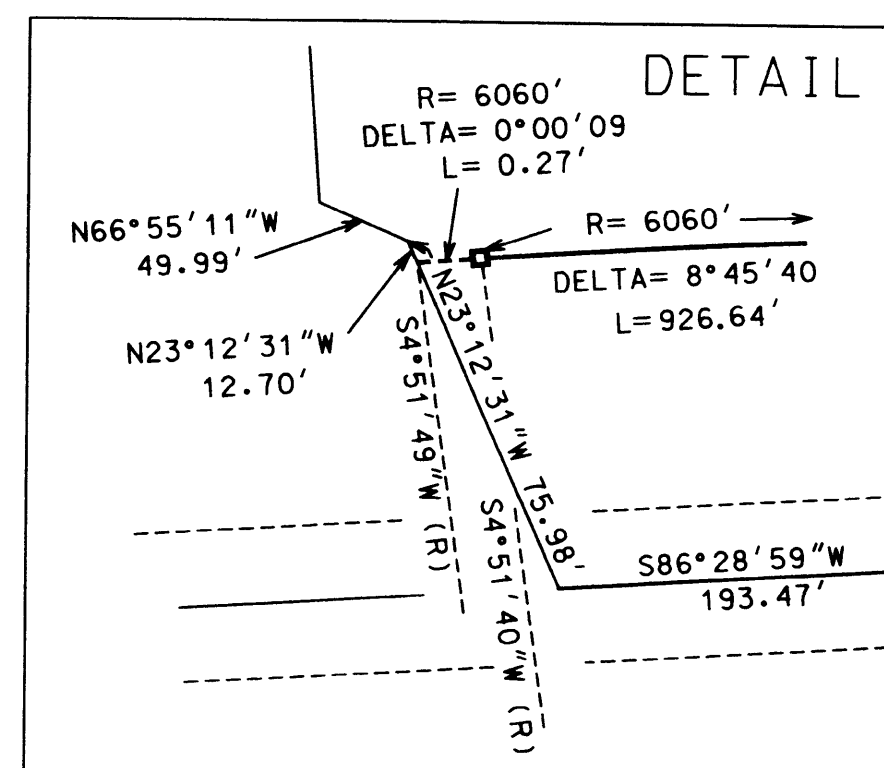
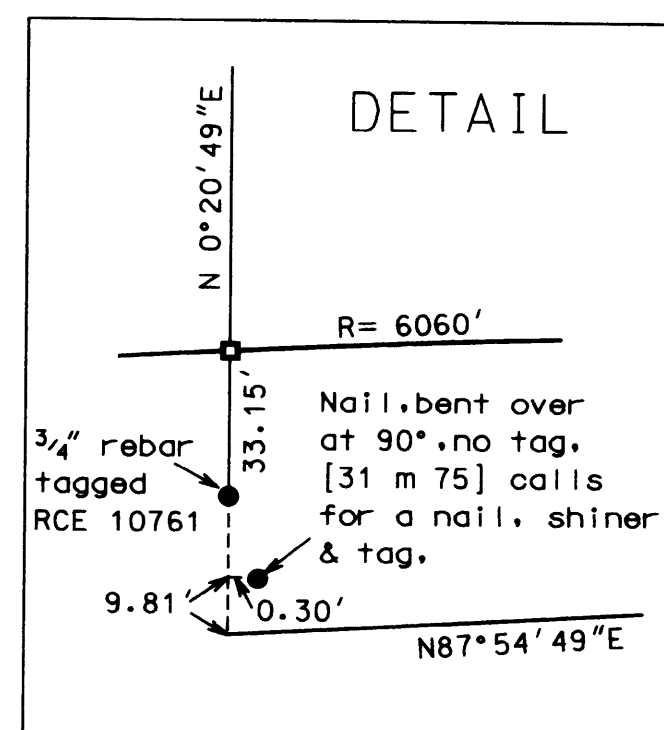
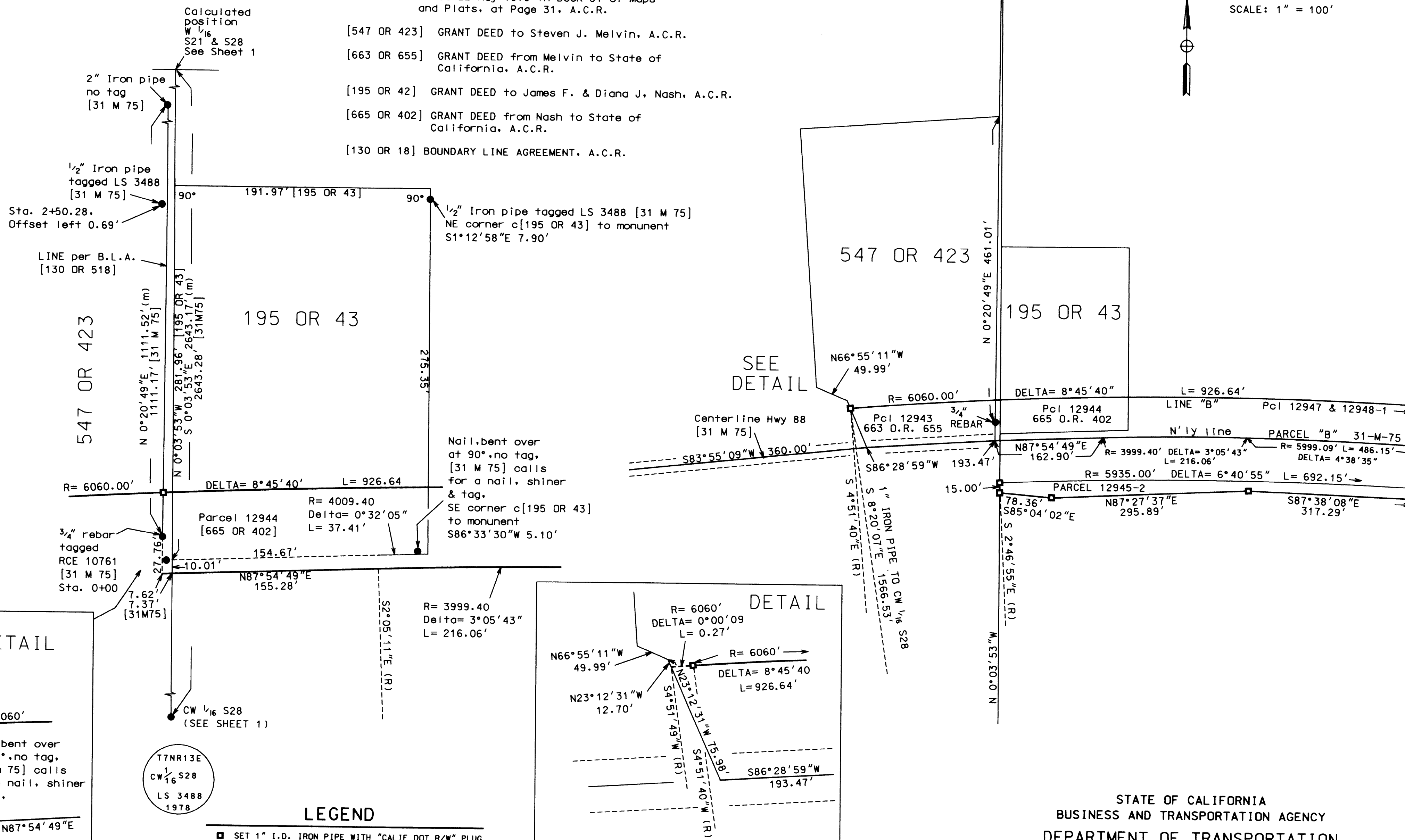
REFERENCE LIST

T 7 N, R 13 E, MDM

DIST	COUNTY	ROUTE	POST MILES TOTAL PROJECT	SHEET NO.	TOTAL SHEETS
10	AMA	88	23.6/36.0	4	4

SCALE: 1" = 100'

- [31 M 75] PARCEL MAP No. 1730, for R. KUNKLE
filed 22 May 1979 in Book 31 of Maps
and Plats, at Page 31, A.C.R.
- [547 OR 423] GRANT DEED to Steven J. Melvin, A.C.R.
- [663 OR 655] GRANT DEED from Melvin to State of
California, A.C.R.
- [195 OR 42] GRANT DEED to James F. & Diana J. Nash, A.C.R.
- [665 OR 402] GRANT DEED from Nash to State of
California, A.C.R.
- [130 OR 18] BOUNDARY LINE AGREEMENT, A.C.R.



LEGEND

- SET 1" I.D. IRON PIPE WITH "CALIF DOT R/W" PLUG
(UNLESS OTHERWISE NOTED)
- MONUMENTS FOUND, AS INDICATED
- [] ACCORDING TO THAT CERTAIN REFERENCE
(SEE REFERENCE LIST)
- OR OFFICIAL RECORDS
- A.C.R. AMADOR COUNTY RECORDS
- (m) MEASURED GRID DISTANCE
- [] CALCULATED ACCORDING TO THAT CERTAIN REFERENCE
(SEE REFERENCE LIST)

THE DISTANCES SHOWN HEREON ARE MEASURED GRID DISTANCES.
DISTANCES SHOWN ENCLOSED IN A [R_] ARE RECORD DISTANCES
CONVERTED TO GRID DISTANCE FOR COMPARATIVE PURPOSES
USING A COMBINED GRID FACTOR (CGF) OF 0.99984910.

STATE OF CALIFORNIA
BUSINESS AND TRANSPORTATION AGENCY
DEPARTMENT OF TRANSPORTATION
DISTRICT 10, STOCKTON
RECORD OF SURVEY

SHOWING MONUMENTS FOUND AND SET IN SECTIONS 21 AND 28
OF T.7 N., R.13 E., M.D.M.

AMADOR COUNTY, CALIFORNIA