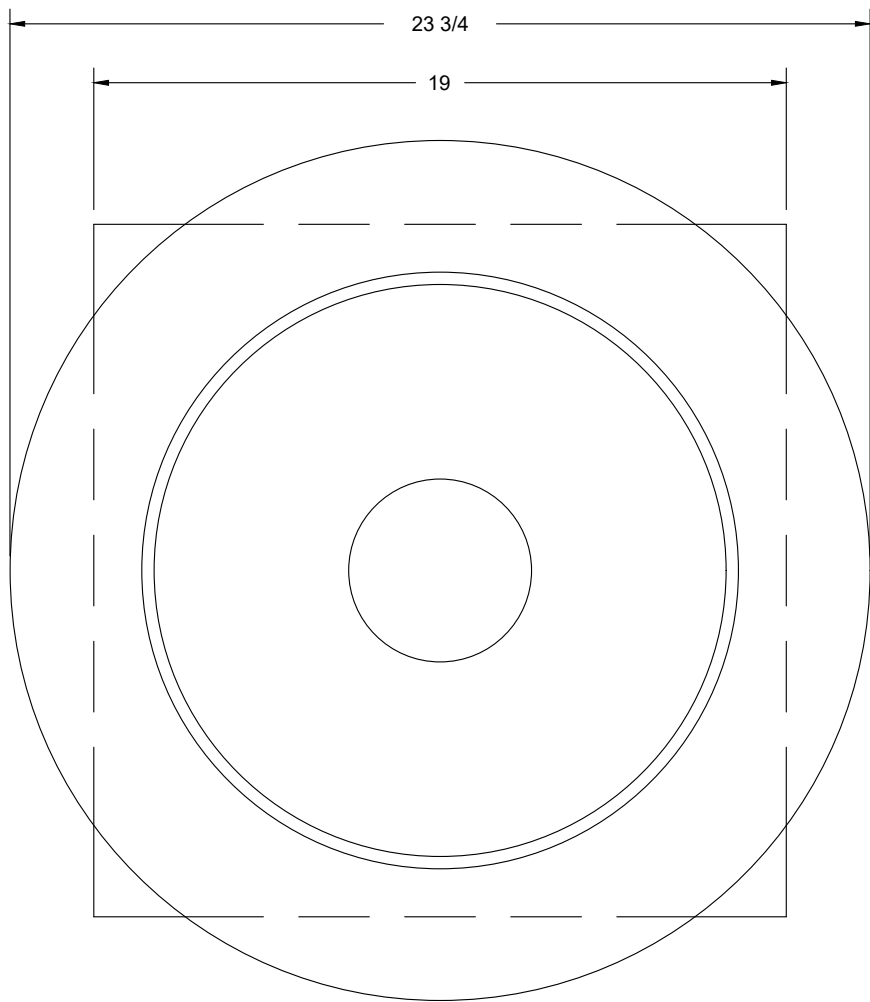
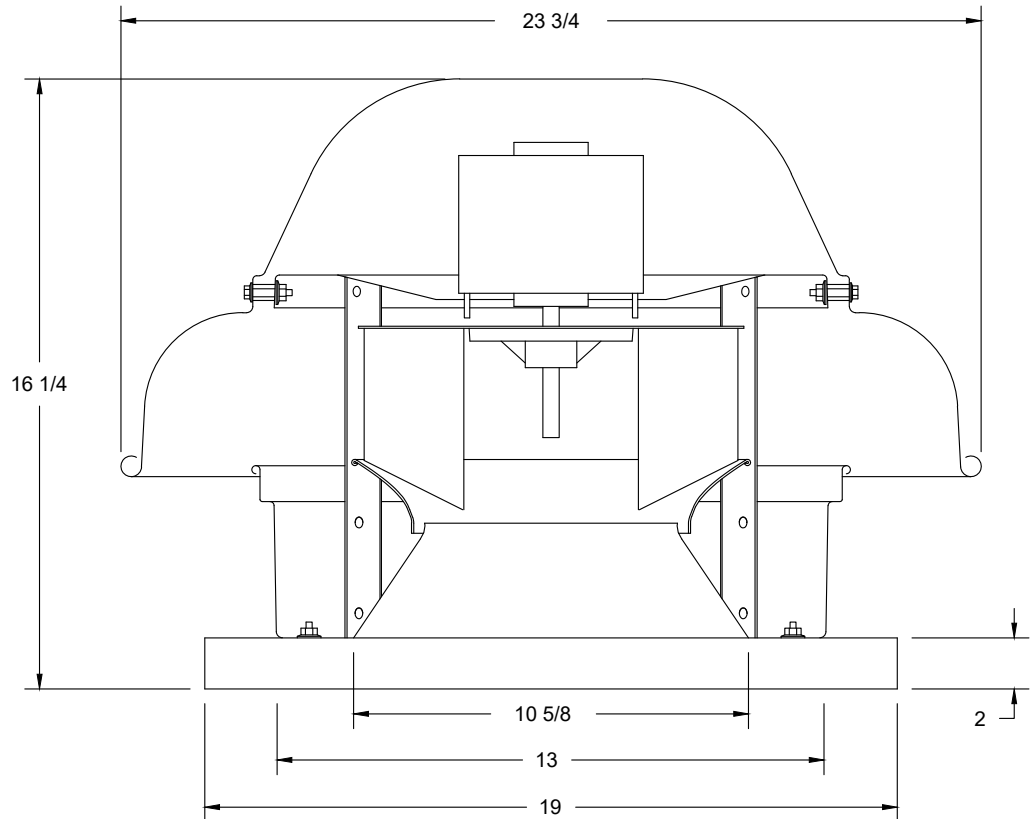


FAN #2 DR12HFA - EXHAUST FAN (EF-2 (RESTROOM))



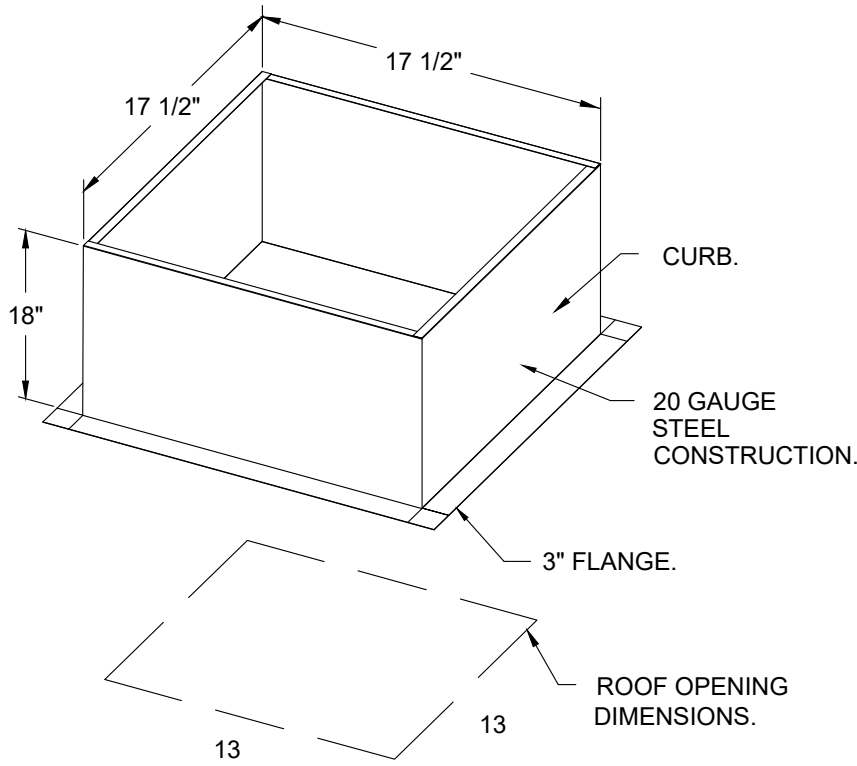
TOP VIEW

FEATURES:

- DIRECT DRIVE CONSTRUCTION (NO BELTS/PULLEYS).
- ROOF MOUNTED FANS.
- UL705.
- SAFETY DISCONNECT.
- STANDARD BIRD SCREEN.
- SPEED CONTROL.

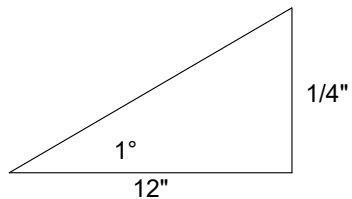
OPTIONS

1 1/2-BDD DAMPER.  
ECM WIRING PACKAGE - MANUAL OR 0-10VDC REFERENCE SPEED CONTROL (TELCO MOTOR), CCW ROTATION.  
2 YEAR PARTS WARRANTY.

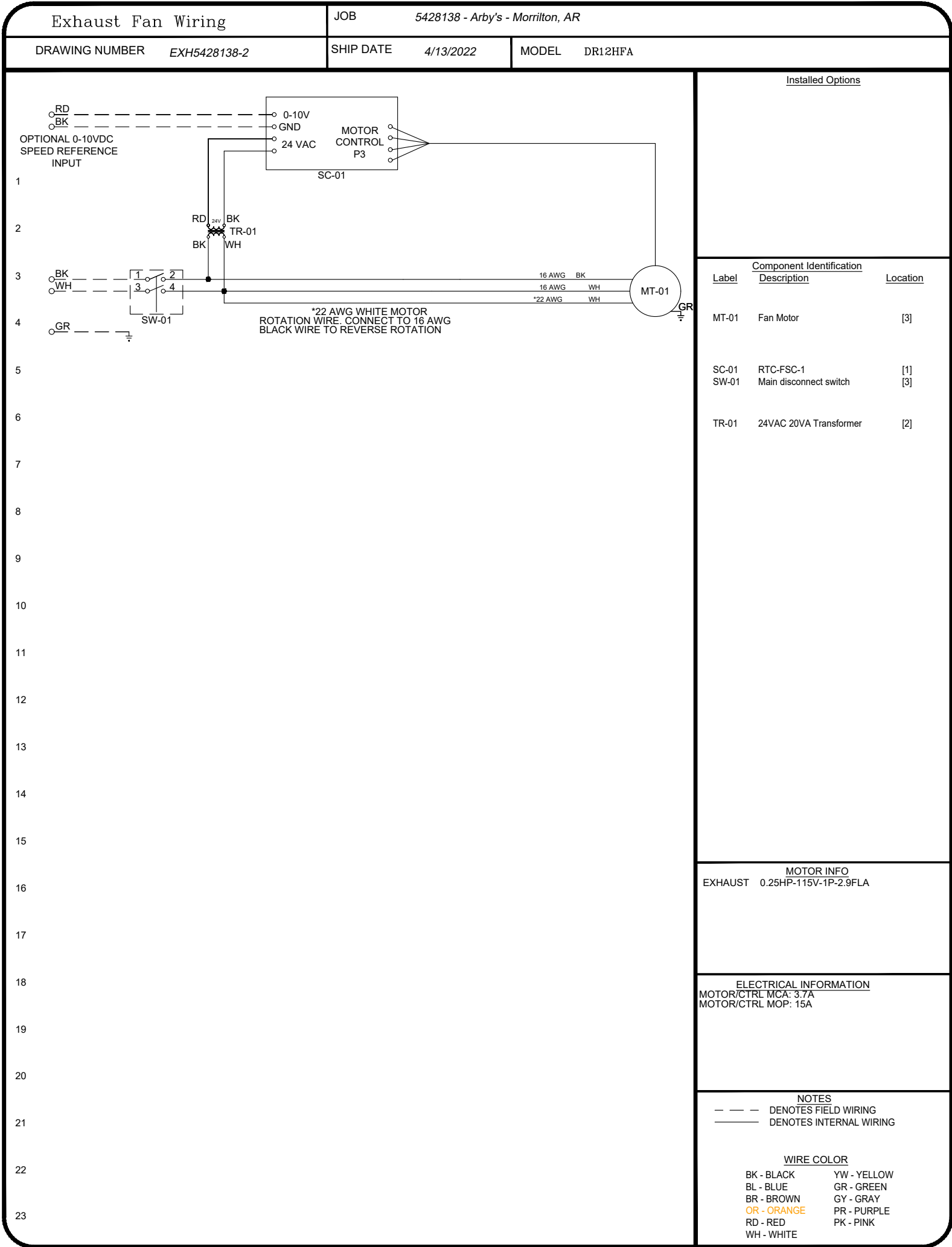
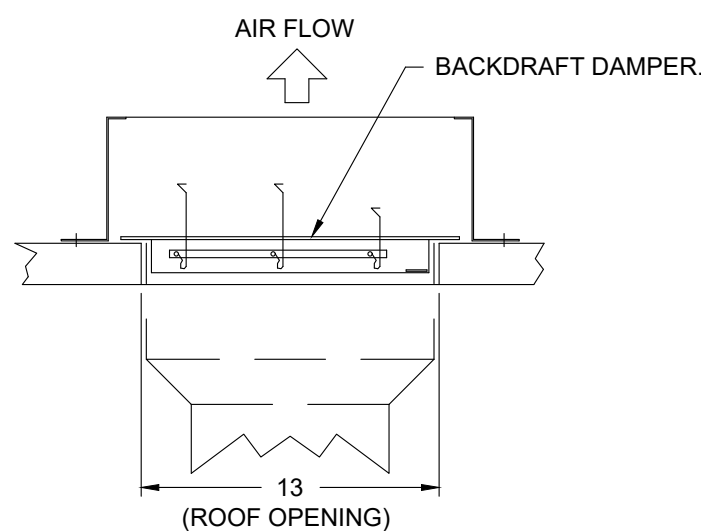


PITCHED CURBS ARE AVAILABLE FOR PITCHED ROOFS.

SPECIFY PITCH:  
EXAMPLE: 7/12 PITCH = 30° SLOPE.



BACKDRAFT DAMPER INSTALLATION



REVISIONS

DESCRIPTION	DATE

www.captiveaire.com

reg80@captiveaire.com

reg80@capitveaire.com

12101 East 51st Street, Suite 101A, Tulsa, OK, 74146

PHONE: (918) 258-0231 FAX: (918) 227-5947 EMAIL: reg80@captiveaire.com

Arby's - Morrilton, AR

MORRILTON, AR, 72110

DATE: 4/13/2022

DWG.#: 5428138

DRAWN BY: R.JH-80

SCALE: 3/4" = 1'-0"

MASTER DRAWING

SHEET NO. 4



CONSULTANTS

**MPW**

MPW ENGINEERING, LLC  
110 W. 7TH STREET • SUITE 600 • TULSA, OK 74119  
(918) 582-4088 • (918) 582-4087 FAX



New Restaurant Conversion For:  
**Arby's - 1808 East Harding Street**  
Morrilton, Arkansas

PROJECT NUMBER:	
ISSUE	DATE
PRELIMINARY	12-14-2021
PERMIT	04-14-2022
REVISION	

CAPTIVEAIRE DRAWINGS

SHEET:

**H1.4**