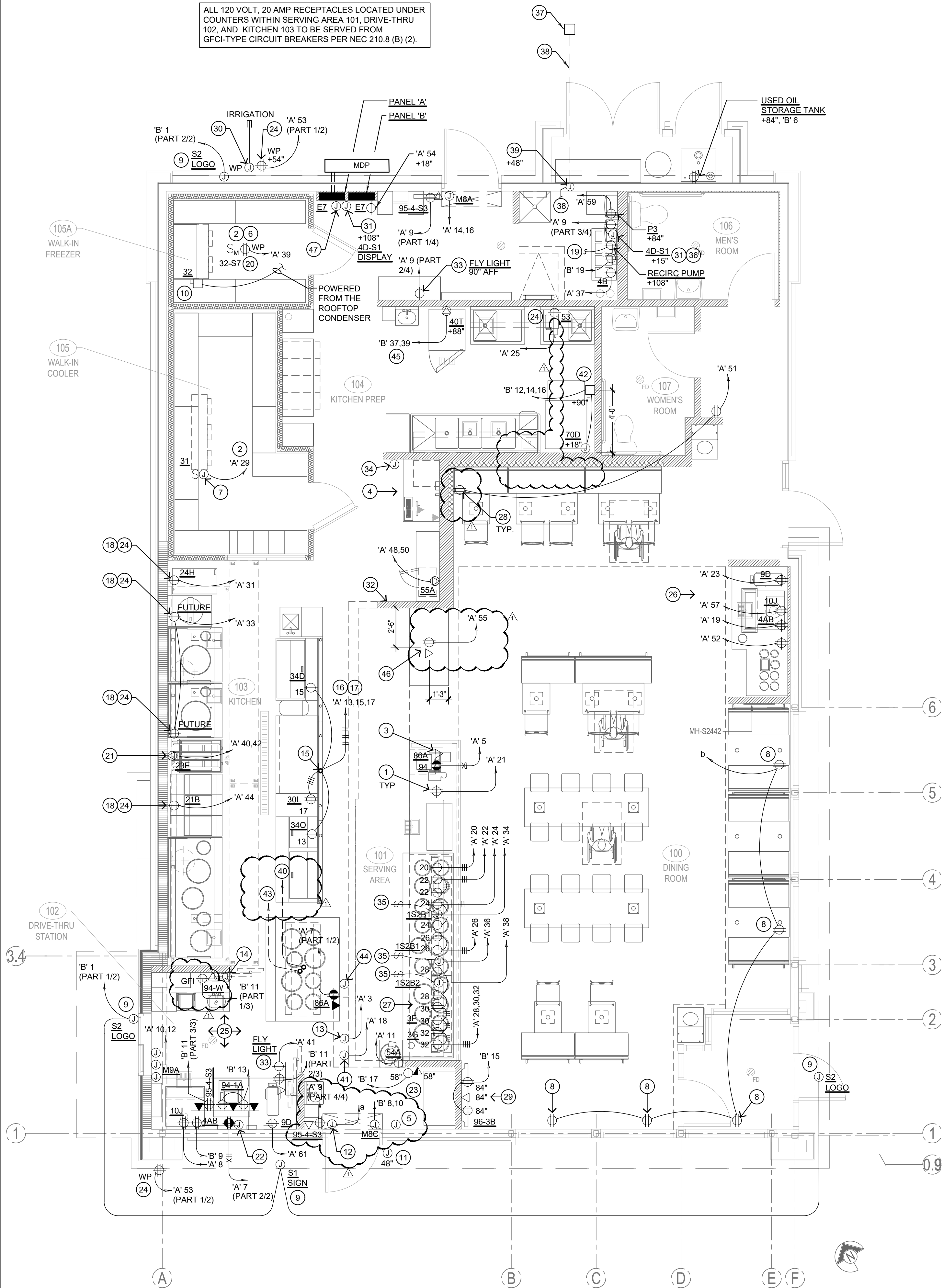


- ALL CIRCUITRY/CONDUIT FOR FRONT LINE EQUIPMENT TO BE ROUTED IN CASEWORK TO J-BOX IN WALL AND CONCEALED IN THE WALL.
- PROVIDE SEALS AND EXPANSION COUPLINGS ON ALL CONDUITS ENTERING OR LEAVING AREAS OF TEMPERATURE DIFFERENCE. REFER TO WIRING NOTES.DETAIL 6/E-400 FOR ADDITIONAL INFORMATION.
- PROVIDE (2) 1 1/2" CONDUITS WITH PULL STRINGS FROM CASH REGISTER TO MANAGER'S STATION. SEE P.O.S. AND SERVICE LINE ELEVATIONS. DETAIL 3/E-200.
- SEE 'MANAGER'S STATION ELEVATION', DETAIL 1/E-200 FOR ADDITIONAL OUTLETS AND J-BOXES.
- ANSUL PULL STATION. REFER TO DETAIL 2/E-400.
- REFER TO 'LTG AND DOOR HEATER WIRING DIAGRAM', DETAIL 10/E-400.
- REFER TO 'COOLER EVAPORATOR COIL' WIRING DIAGRAM, DETAIL 8/E-400.
- SHOW WINDOW RECEPTACLE SHALL BE CONTROLLED VIA SWITCH "b". REFER TO LIGHTING SWITCHBANK SCHEDULE. DETAIL 4/E-101. RECEPTACLE SHALL BE MOUNTED IN WALL AS CLOSE TO TOP OF STRUCTURAL HEADER AS POSSIBLE.
- BUILDING SIGNAGE/LOGO DEDICATED W.P. J-BOX. FOR SIGNAGE. COORDINATE LOCATION WITH ARCHITECT / OWNER / SIGN PACKAGE PRIOR TO ROUGH-IN. SIGN DISCONNECT PROVIDED BY SIGN CONTRACTOR.
- REFER TO 'FREEZER EVAPORATOR COIL' WIRING DIAGRAM, DETAIL 9/E-400. THE FAN COIL UNIT IS POWERED FROM THE CONDENSER UNIT ON THE ROOF VIA A DISCONNECT CONNECTION. HEAT TAPE IS PROVIDED AND INSTALLED BY THE ELECTRICIAN.
- PROVIDE J-BOX WITH PULL STRING TO ABOVE CEILING FOR DOOR KEYPAD CONTROL WIRING.
- J-BOX CIRCUIT ABOVE CEILING TO POWER ELECTRIC DOOR HARDWARE. DOOR HARDWARE SYSTEM SHALL BE CONNECTED TO SWITCH 'a'. REFER TO 4/E-101 FOR SWITCHBANK DETAIL.
- HOOD CONTROL PANEL/ANSUL SYSTEM CABINET. MOUNT CABINET DIRECTLY BELOW T-BAR CEILING.
- PROVIDE 2-GANG J-BOX @ 48" AFF FOR HOOD CONTROL SWITCHES. REFER TO SHEETS M-400 AND M-401.
- 1" CONDUIT STUB UP LOCATION IN STAINLESS STEEL POWER PANEL FOR ISLAND KITCHEN EQUIPMENT CONNECTION. REFER TO DETAIL 2/A-109. COORDINATE LOCATION WITH ARCHITECT / OWNER.
- ROUTE CABLING / CIRCUITRY THROUGH 1" CONDUIT IN SLAB.
- UTILIZE SEAL TIGHT CONDUIT FOR ALL WIRING INCLUDED ALONG LOW WALL PANEL.
- ALL DEVICES UNDER HOOD TO BE PROVIDED AND INSTALLED WITH GROUND FAULT CIRCUIT BREAKERS AND WATER- PROOFING BOX (RED DOT WCKSUV) REFER TO COOKLINE ELECTRICAL ELEVATIONS 8/E-200. ROUTE HOMERUN THROUGH CONTACTOR INTERFACED WITH THE HOOD FIRE SUPPRESSION SYSTEM. REFERENCE DETAIL 13/E-400 FOR ADDITIONAL INFORMATION.
- SIMPLEX RECEPTACLE TO BE CONNECTED TO BACK-OF-HOUSE LIGHTING CIRCUITRY/CONTROL CONTRACTOR TO PROVIDE PIGTAIL FROM CIRCULATION PUMP.
- PROVIDE WEATHERPROOF RECEPTACLE FOR HEAT TAPE. COORDINATE FINAL LOCATION WITH REFRIGERATION INSTALLER.
- ELECTRIC GRIDDLE '23E' FEED WITH 2#8, #10 GROUND, 3/4" CONDUIT. ROUTE HOMERUN THROUGH CONTACTOR INTERFACED WITH THE HOOD FIRE SUPPRESSION SYSTEM. REFER TO DETAILS 4/E-200 AND 13/E-400 FOR ADDITIONAL INFORMATION.
- SEE DRIVE-THRU ELEVATION 2/E-200 FOR CONDUIT SIZES AND CONFIGURATIONS.
- SEE TICKET PRINTER ELEVATIONS. DETAIL 7/E-200.
- PROVIDE WATERPROOFING COVER, IN-USE, RED DOT (#CKSUV).
- SEE DRIVE-THRU ELEVATIONS, DETAIL 2/E-200.
- SEE DRINK STATION ELEVATION, DETAIL 5/E-200.
- SEE DETAIL 3/E-200 FOR SERVICE LINE ELEVATIONS.
- SEE DEVICE/RECEPTACLE SCHEDULE DETAIL 3/E-400.
- SEE DINING ROOM MONITOR ELEVATION, DETAIL 8/E-200.
- PROVIDE AND INSTALL 3/4" CONDUIT AND PULL STRING FROM CLOSEST LANDSCAPE AREA, THROUGH WALL AND UP TO EMPTY FLUSH MOUNTED JUNCTION BOX @ 54" A.F.F. (FOR IRRIGATION CONTROLS). CLOSE OFF CONDUIT IN LANDSCAPE AREA WITH REMOVABLE CAP. UTILIZE CIRCUIT 'A'-53 NEAR ENTRY POINT.
- REFER TO DETAIL 10/E-200 FOR LOCATION/INSTALLATION OF CO2 DEVICE.
- SEE SWITCH BANK ELEVATION, DETAIL 7/E-200.
- FLY LIGHT RECEPTACLE SHALL BE INSTALLED WITH A RECESSED SIMPLEX CLOCK OUTLET. TYPICAL FOR ALL LOCATIONS.
- SEE SECURITY KEY PAD ELEVATION, DETAIL 1/E-200.
- CONNECT HEAT LAMPS TO COUNTER-MOUNTED SWITCH PROVIDED AND INSTALLED BY THE CONTRACTOR. COORDINATE EXACT LOCATION WITH KITCHEN EQUIPMENT PROVIDER.
- PANDA EXPRESS TO PROVIDE CO2 MONITOR. E.C TO MOUNT OVER J-BOX WITH WIRING THROUGH WALL CONDUIT FOR CLEAN INSTALLATION. PROVIDE ALL OTHER REQUIRED CONNECTIONS AND COMPONENTS FOR A FULLY WORKING SYSTEM.
- PROVIDE IN-GRADE QUAZITE 8" X 8" PC STYLE POLYMER CONCRETE BOX OR EQUAL FOR UNDERGROUND CABLE REQUIRED FOR THE STORE. PART # PC081XXXXX OR SIMILAR. REFER TO ELECTRICAL SITE PLAN 1/E-105.
- PROVIDE 1" CONDUIT FOR CABLE DEDICATED FOR ENTIRE STORE FROM IN-GRADE 8" X 8" QUAZITE BOX TO EXTERIOR CLOSET 6" X 6" FLUSH MOUNTED JUNCTION BOX. TERMINATE INTERIOR CONDUIT ABOVE CEILING.
- PROVIDE FLUSH MOUNTED NEMA 1, 6" X 6" JUNCTION BOX AT +48" AFF, HUBBELL OR EQUAL. ROUTE CABLE FROM EXTERIOR CLOSET 6" X 6" J-BOX IN 1" CONDUIT THROUGH BUILDING. TERMINATE INTERIOR CONDUIT ABOVE CEILING.
- PROVIDE (1) 3/4" CONDUIT AND PULLSTRING FOR LOW VOLTAGE WIRING. CONDUIT AND PULLSTRING TO BE RUN UNDERGROUND FROM THE HOTWELL CABINET AND TURNED UP INTO THE WALL AND TO ABOVE THE CEILING. ADJACENT TO THE MANAGER'S STATION.
- FIRE SUPPRESSION SHUT-DOWN CONTACTOR LOCATED ABOVE THE CEILING. REFER TO DETAIL 12/E-400.
- PROVIDE A WALL MOUNTED 60A, 3P., NEMA 3R, NON-FUSED DISCONNECT SWITCH FOR THE DISHWASHER. PROVIDE A 1" WATER TIGHT WHIP WITH 3#6, #10G. FROM THE DISCONNECT TO THE DISHWASHER CONNECTION POINT AT THE BACK OF THE UNIT. FINAL CONNECTION SHALL BE BY HOBART SERVICES.
- PROVIDE (1) 1" CONDUIT AND PULLSTRING FOR THE HOTWELL CABINET. CONDUIT AND PULLSTRING TO BE RUN UNDERGROUND FROM THE HOTWELL CABINET AND TURNED UP INTO THE WALL AND INTO THE BOTTOM OF PANEL 'A'. REFER TO THE PANEL SCHEDULE FOR CIRCUITS TO BE UTILIZED IN THE FUTURE.
- MOUNT THE CAPTIVEARE SENSOR ON SOFFIT NEAR THE DRIVE-THRU STATION. COORDINATE THE LOCATION WITH THE MECHANICAL CONTRACTOR. REFER TO SHEET M-401 FOR ADDITIONAL INFORMATION.
- THAWING CABINET. PROVIDE A 20A, 125/250V RECEPTACLE WITH 3#12, 1#12G, 3/4"C.
- PROVIDE POWER AND DATA FOR 'TO GO' UNIT. MOUNT DEVICES IN BOTTOM OF THE SOFFIT.
- PROVIDE J-BOX WITH 3/4" CONDUIT STUBBED ABOVE THE CEILING SPACE FOR THE OIL RECOVERY ALARM.

- VERIFY QUANTITIES AND REQUIREMENTS OF ALL HVAC & KITCHEN EQUIPMENT PRIOR TO ROUGH IN.
- ALL TELEPHONE/DATA/TV CABLES AND WIRES AND TERMINATIONS OF ALL REQUIRED CABLE AND JACKS WILL BE INSTALLED BY A THIRD PARTY.
- POWER SUPPLY FOR COMPUTER AND CASH REGISTER (86A, & 94) SHALL BE ON THE SAME CIRCUIT BREAKER, WITH AN ISOLATED GROUND ORANGE RECEPTACLE.
- ALL CIRCUITRY SHOWN WITHOUT TICKS SHALL HAVE (2) WIRES PLUS AN EQUIPMENT GROUNDING CONDUCTOR.
- ALL INDIVIDUAL BRANCH CIRCUITS SHALL HAVE SEPARATE NEUTRALS TO MEET THE REQUIREMENTS OF 2017 NEC 210.4(B). MULTI-WIRE BRANCH CIRCUITS WITH COMMON NEUTRAL SHALL ONLY SERVE SINGLE DEVICE CIRCUITS FROM MULT-POLE BREAKERS.
- TRANSFORMERS SHALL BE MOUNTED ABOVE CEILING AND BELOW TRUSSES WITH LOW VOLTAGE WIRING FEEDING ALL EXTERIOR LIGHTS.
- ALL UNDERGROUND CONDUIT SHALL BE 12" BELOW THE FINISHED FLOOR.



POWER PLAN KEYED NOTES

3

NOT TO SCALE

E-100

POWER PLAN GENERAL NOTES

2

NOT TO SCALE

E-100

POWER FLOOR PLAN

1

Scale: 1/4"=1'-0"

E-100



PANDA EXPRESS, INC.
1683 Walnut Grove Ave.
Rosemead, California
91770

Telephone: 626.799.9898
Facsimile: 626.372.8288

All ideas, designs, arrangement and plans indicated or represented by this drawing are the property of Panda Express Inc. and were created for use on this specific project. None of these ideas, designs, arrangements or plans may be used by or disclosed to any person, firm, or corporation without the written permission of Panda Express Inc.

REVISIONS:

PERMIT RESPONSE 01 02/07/2023

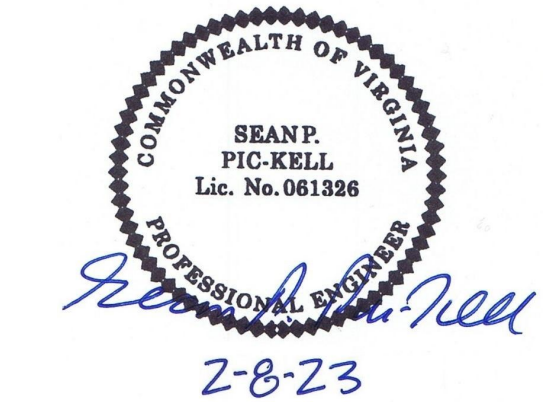
ISSUE DATE:

PERMIT / BID SET 10-12-22

DRAWN BY: G. COLLINS

PANDA PROJECT #: D8675

ARCH PROJECT #: JCDT21-0221-00



NORR
ARCHITECTS • BUILDERS • PLANNERS

PANDA EXPRESS

TRUE WARM & WELCOME
1121 COURTHOUSE RD.
STAFFORD, VA 22554

E-100

POWER FLOOR PLAN

TRUE WARM & WELCOME 2500 R2



PANDA EXPRESS, INC.
1683 Walnut Grove Ave.
Rosemead, California
91770
Telephone: 626.799.9898
Facsimile: 626.372.8288

All ideas, designs, arrangement and plans indicated or represented by this drawing are the property of Panda Express Inc. and were created for use on this specific project. None of these ideas, designs, arrangements or plans may be used by or disclosed to any person, firm, or corporation without the written permission of Panda Express Inc.

REVISIONS:

1 PERMIT RESPONSE 01 02/07/2023

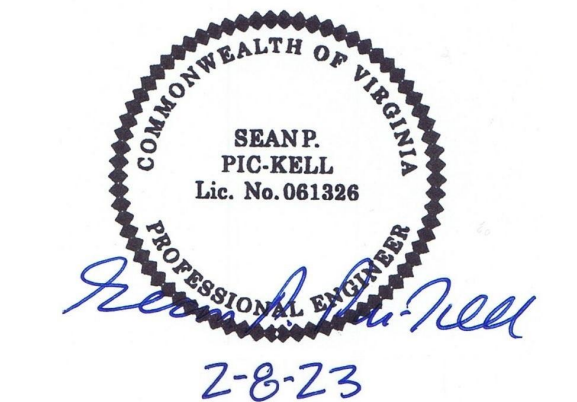
ISSUE DATE:

1 PERMIT / BID SET 10-12-22

DRAWN BY: G. COLLINS

PANDA PROJECT #: D8675

ARCH PROJECT #: JCDT21-0221-00



NORR
ARCHITECTS • INTERIORS • PLANNERS

PANDA EXPRESS
TRUE WARM & WELCOME
1121 COURTHOUSE RD.
STAFFORD, VA 22554

E-101

LIGHTING FLOOR PLAN

TRUE WARM & WELCOME 2500 R2

- SWITCHBANK 'A'. REFER TO SCHEDULE DETAIL 4/E-101, THIS SHEET.
- ROUTE HOMERUN THROUGH LIGHTING SWITCHBANK 'A' (SWITCHES AS NOTED IN LOWER CASE). REFER TO SCHEDULE, 4/E-101 FOR ADDITIONAL INFORMATION.
- ROUTE THROUGH CONTACTS IN HOOD CONTROL PANEL 'M4' FOR CIRCUIT POWER. REFER TO DETAIL 3/E-401.
- PROVIDE SEPARATE UNSWITCHED HOT CONDUCTOR (SAME CIRCUIT, NOT CONTROLLED BY SWITCH IN SWITCHBANK) TO LOCALLY SWITCHED FIXTURES AND EMERGENCY FIXTURE BATTERY TRIGGER LEADS.
- DUPLEX RECEPTACLE FOR LED ROPE. INSTALL ABOVE CEILING AT 128" AFF. REFER TO DETAILS 8/A-402 AND 9/A-402 FOR ADDITIONAL INFORMATION.
- WALK-IN COOLER LIGHT FIXTURES AND PILOT LIGHT SWITCH ARE PROVIDED WITH FREEZER, INSTALLED BY E.C. REFER TO 'COOLER EVAPORATOR COIL' WIRING DIAGRAM, DETAIL 8/E-400.
- WALK-IN FREEZER LIGHT FIXTURE AND PILOT LIGHT SWITCH ARE PROVIDED WITH FREEZER, INSTALLED BY E.C. REFER TO 'FREEZER LTG AND DOOR HEATER WIRING DIAGRAM', DETAIL 10/E-400.
- NOT USED.
- FIXTURES IN THIS ROOM SHALL BE LOCALLY SWITCHED.
- LIGHTING INVERTER FOR EMERGENCY LIGHTING TO BE MOUNTED TO BULKHEAD. RE: 9/E-200.
- LED TRANSFORMER LOCATION FOR LED ROPE LIGHT. MOUNT ABOVE CEILING.
- NOT USED.
- PROVIDE JUNCTION BOX ABOVE CEILING FOR THE BZ-150 UNIVERSAL POWER PACK REQUIRED FOR THE (3) EXTERIOR MOTION CONTROLLED LED (L97) FIXTURES. PROVIDE LOW VOLTAGE CONNECTIONS AS REQUIRED TO LIGHTSAVER LS-102 SWITCHING PHOTOSENSOR SO THAT WHEN STORE OPERATIONS ARE OFF, THIS EXTERIOR SECURITY LIGHT IS ACTIVATED BY EXTERIOR MOTION. ONLY. VERIFY WITH MANUFACTURER'S RECOMMENDATIONS FOR WIRING DIAGRAM. VERIFY LOCATIONS WITH OWNER PRIOR TO INSTALLATION.
- PROVIDE WALL MOUNTD JUNCTION BOX AT +142" FOR THE INSTALLATION OF THE LIGHTSAVER LS-102 SWITCHING PHOTOSENSOR. INSTALL LIGHTSAVER LS-102 FOR THE (3) EXTERIOR TYPE L97 MOTION CONTROL SECURITY FIXTURES. CONTROL TIMES OF CONTROL SHALL BE THAT WHEN STORE OPERATIONS ARE OFF THE INTERIOR LIGHTS GO OFF AND THE EXTERIOR MOTION LIGHTS ARE ACTIVATED WITH ANY MOTION DETECTED AFTER STORE HOURS. VERIFY WITH THE MANUFACTURER'S RECOMMENDATIONS FOR WIRING DIAGRAM. VERIFY LOCATIONS WITH OWNER PRIOR TO INSTALLATION.
- 'X1', 'X2' AND 'X3' ARE THE LOW VOLTAGE CONNECTIONS FROM THE LIGHTSAVER SWITCHING PHOTOSENSOR TO THE EXTERIOR LED (L97) FIXTURES.
- NOT USED.
- CONNECT TO VEGETABLE DISPLAY LIGHTING PROVIDED WITH WALK-IN COOLER.
- PROVIDE SEALS AND EXPANSION COUPLINGS ON ALL CONDUITS ENTERING OR LEAVING AREA OF TEMPERATURE DIFFERENCE. REFER TO WIRING NOTES ON DETAIL 6/E-400 FOR ADDITIONAL INFORMATION.

- CONTRACTOR SHALL PROVIDE ALL REQUIRED HARDWARES, BRACKETS, ETC. FOR A COMPLETE LIGHTING FIXTURE INSTALLATION.
- FIXTURES THAT ARE TO BE ROUTED VIA TIMECLOCKS ARE SHOWN ON DETAIL 11/E-400. SEQUENCE OF OPERATION: TIMECLOCKS WIRED FIRST FOR DESIGNATED CONTROL. SWITCHES ARE SERIES WIRED WITH THE CONTACTORS. UTILIZE DIGITAL OVERRIDE TIMER SWITCH (DOTS) TO OVERRIDE THE TIMECLOCKS FOR CLEANING AND AFTER HOURS AS NEEDED. SEE DETAIL 11/E-400
- ALL LIGHTING FIXTURES SHALL BE SUPPORTED PER N.E.C. 410-16(C). SEE DETAIL, 4/E-400.
- CONTRACTOR SHALL INSTALL ALL LIGHTING FIXTURES INCLUDING OWNER-FURNISHED FIXTURES.
- ALL FIXTURE DRIVERS SHALL BE U.L. LISTED.
- E.C. SHALL INSTALL OWNER SUPPLIED LED STRIP LIGHTING & CUT TO PROPER LENGTH. COORDINATE WITH OWNER FOR EXACT LENGTHS AND FINAL LOCATIONS.
- ALL MULTI-WIRE BRANCH CIRCUITS TO HAVE SEPARATE NEUTRALS TO MEET THE REQUIREMENTS OF 2017 NEC 210.4(B).
- ALL CIRCUITRY SHOWN WITHOUT Ticks SHALL HAVE (2) WIRES PLUS EQUIPMENT GROUNDING CONDUCTOR.
- 'NL' DESIGNATION INDICATES NIGHT LIGHT ON UNSWITCHED CIRCUIT.

LIGHTING GENERAL NOTES 2

NOT TO SCALE E-101

LIGHTING KEYED NOTES 3

NOT TO SCALE E-101

NOTE:
ALL SWITCHES/DEVICES TO BE STANDARD SINGLE POLE.
DO NOT USE 'DECORA' TYPE SWITCH/DEVICES.

NOTE:
FIXTURES TO BE ROUTED VIA TIME TIMECLOCKS ARE SHOWN ON
DETAIL 11/E-400.

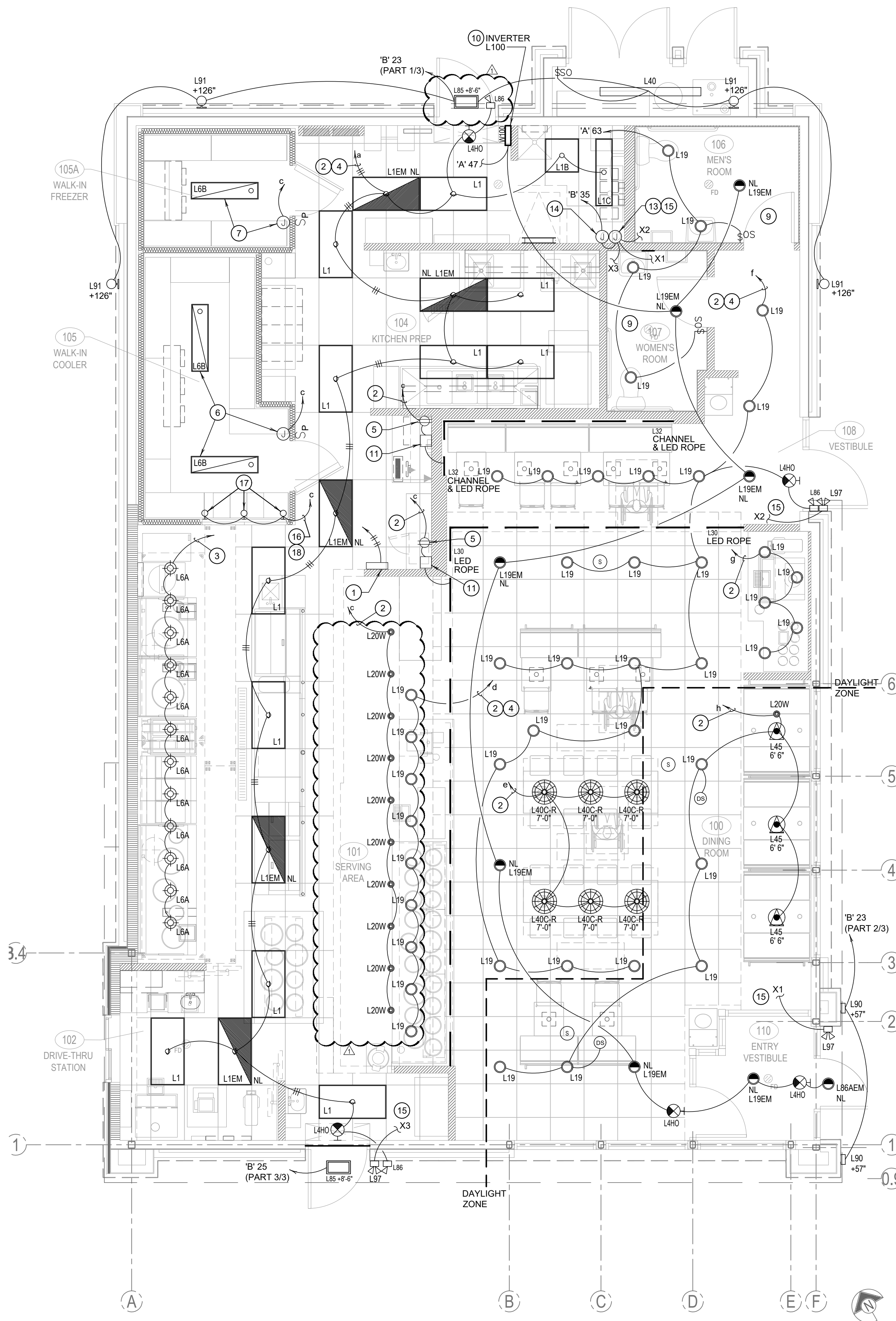
NOTE:
CONTRACTOR TO INSTALL (2) 5 GANG SWITCH BOXES AS SHOWN
BELOW. DO NOT INSTALL SEPERATE/INDIVIDUAL BOXES FOR EACH
SWITCH

(a)	(b)	(c)	(d)	(e)
\$	\$	\$	\$	\$
BACK OF HOUSE LTG, EXH. FAN AND RECIRC PUMP	SHOW WINDOW RECEPTS	WALK-IN LTG, MENUBOARD	SERVING LINE SOFFIT	DINING PENDANTS
(f)	(g)	(h)	(i)	(j)
\$	\$	\$	\$	OFF ON
INTERIOR DINING	BEVERAGE COUNTER	DAYLIGHT HARVEST ZONE	SPARE	INTERIOR LIGHTING SHUT DOWN OVERRIDE

SWITCHBANK SCHEDULE 'A'				
TAG	SWITCH TYPE	AREA SERVED / SWITCH LABEL	CIRCUIT	LOAD
a	TOGGLE SWITCH	BACK-OF-HOUSE / RR FANS	'A' 45	1028 VA
b	TOGGLE SWITCH	SHOW WINDOW RECEP	'A' 49	1000 VA
c	TOGGLE SWITCH	WALK-INS, MENUBOARD	'A' 1	307 VA
d	TOGGLE SWITCH	SERVING LINE SOFFIT	'A' 45	90 VA
e	TOGGLE SWITCH	DINING PENDANTS	'A' 47	54 VA
f	TOGGLE SWITCH	INTERIOR DINING	'A' 47	205 VA
g	TOGGLE SWITCH	BEVERAGE COUNTER	'A' 47	50 VA
h	TOGGLE SWITCH	DAYLIGHT HARVESTING ZONE	'A' 47	77 VA
i	TOGGLE SWITCH	SPARE		
j	TIMER SWITCH	INTERIOR LIGHTING SHUT DOWN OVERRIDE	'A' 47	205 VA

LIGHTING SWITCHBANK SCHEDULE 4

NOT TO SCALE E-101





PANDA EXPRESS, INC.
1683 Walnut Grove Ave.
Rosemead, California
91770
Telephone: 626.799.9898
Facsimile: 626.372.8288

All ideas, designs, arrangement and plans indicated or represented by this drawing are the property of Panda Express Inc. and were created for use on this specific project. None of these ideas, designs, arrangements or plans may be used by or disclosed to any person, firm, or corporation without the written permission of Panda Express Inc.

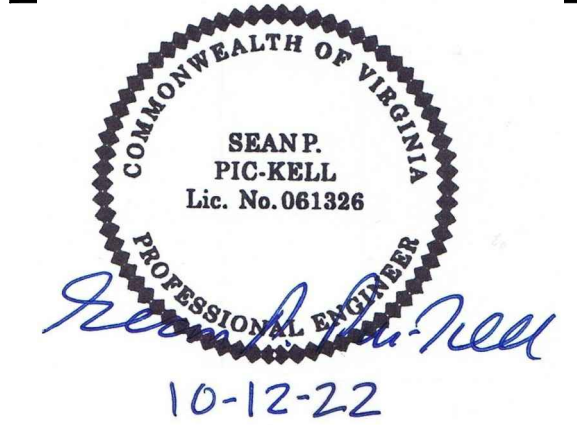
REVISIONS:

ISSUE DATE:

PERMIT / BID SET	10-12-22

DRAWN BY: G. COLLINS

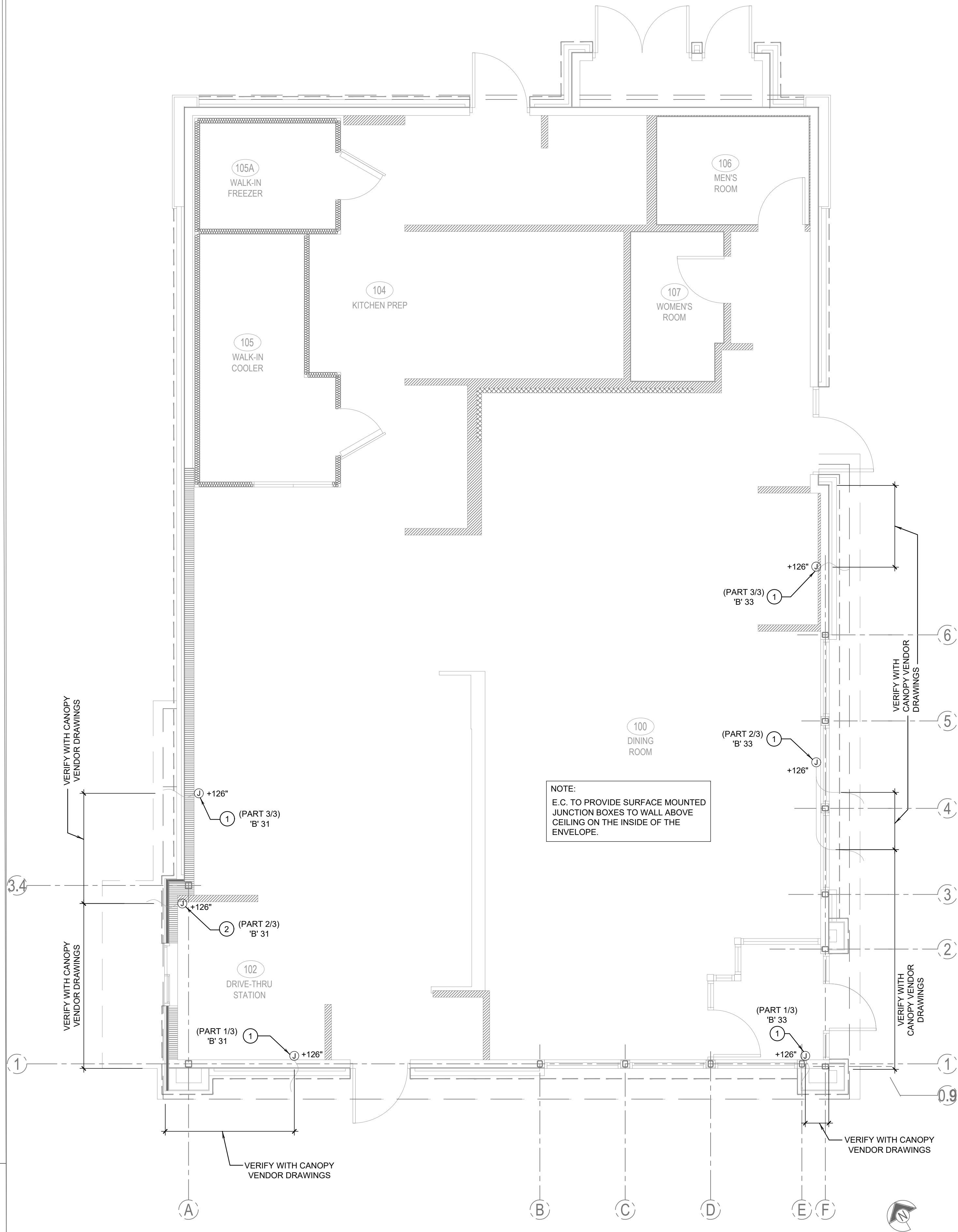
PANDA PROJECT #: D8675
ARCH PROJECT #: JCDT21-0221-00



E-101.1

CANOPY LIGHTING PLAN

TRUE WARM & WELCOME 2500 R2



NOTE:
G.C./ELECTRICAL SUB TO
COORDINATE AND VERIFY THE
ELECTRICAL LAYOUT WITH THE
CANOPY VENDOR.

- 1. E.C. TO PROVIDE J-BOX WITH 3' WHIP FOR CONNECTION TO PANDA EXPRESS PROVIDED LIGHTED CANOPY. E.C. TO MAKE FINAL CONNECTION.
- 2. E.C. TO PROVIDE J-BOX WITH 3' WHIP FOR CONNECTION TO PANDA EXPRESS PROVIDED LIGHTED DRIVE THRU CANOPY. E.C. TO MAKE FINAL CONNECTION.

#	CANOPY LIGHTING KEYED NOTES	2
	NOT TO SCALE	E-101.1

CANOPY LIGHTING PLAN	1
Scale: 1/4"=1'-0"	E-101.1



PANDA EXPRESS, INC.
1683 Walnut Grove Ave.
Rosemead, California
91770
Telephone: 626.799.9898
Facsimile: 626.372.8288

All ideas, designs, arrangement and plans indicated or represented by this drawing are the property of Panda Express Inc. and were created for use on this specific project. None of these ideas, designs, arrangements or plans may be used by or disclosed to any person, firm, or corporation without the written permission of Panda Express Inc.

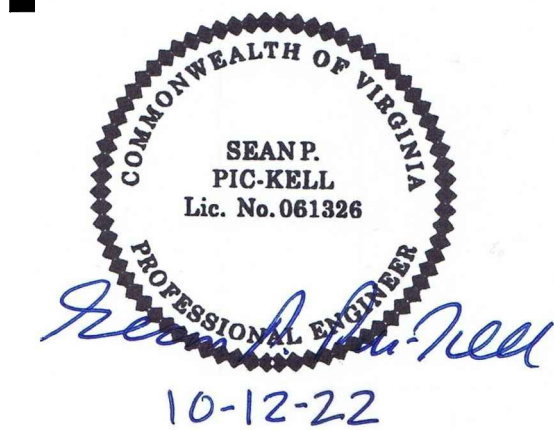
REVISIONS:

ISSUE DATE:

PERMIT / BID SET	10-12-22

DRAWN BY: G. COLLINS

PANDA PROJECT #: D8675
ARCH PROJECT #: JCDT21-0221-00



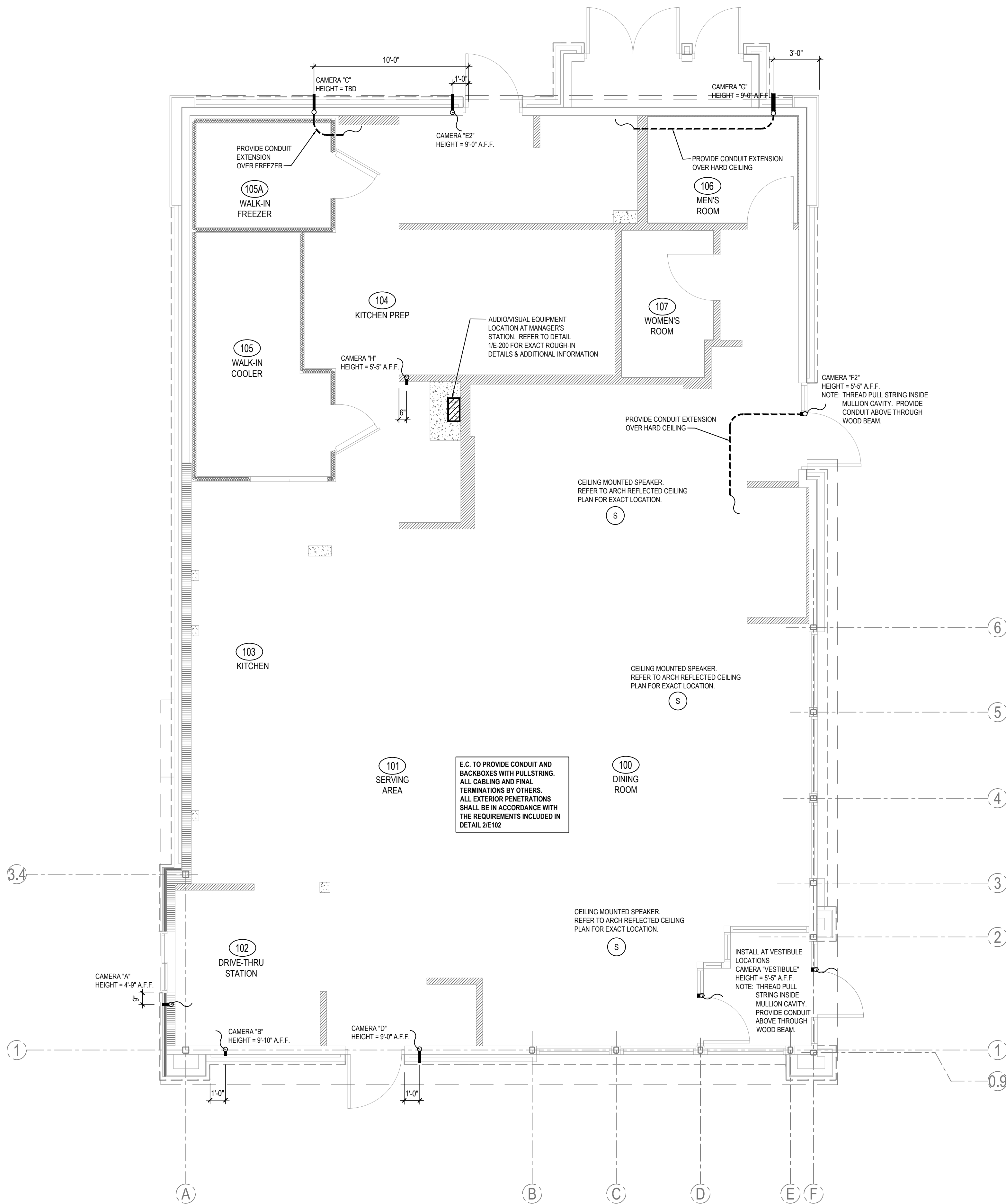
NORR
ARCHITECTS • INTERIORS • PLANNING

PANDA EXPRESS
TRUE WARM & WELCOME
1121 COURTHOUSE RD.
STAFFORD, VA 22554

E-102

SECURITY CAMERA PLAN

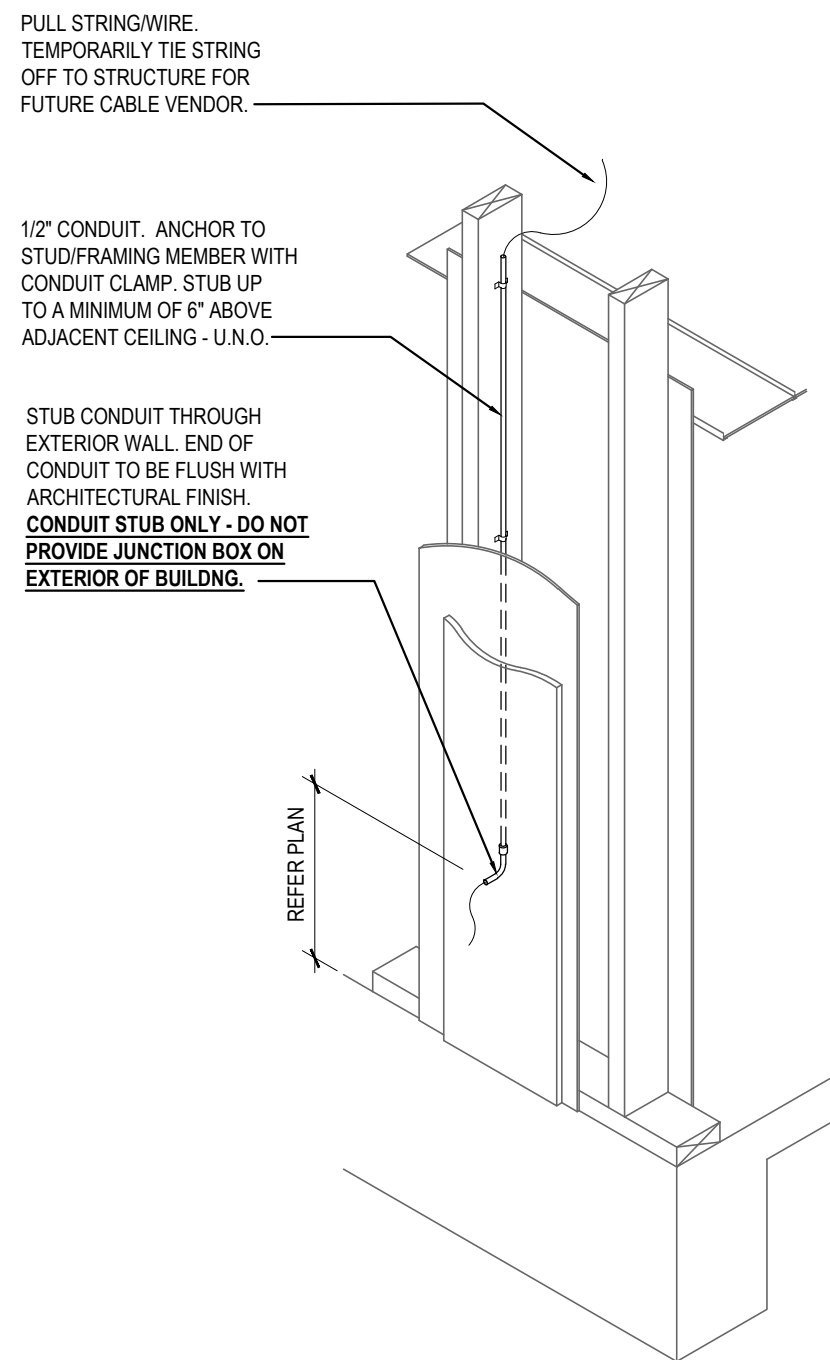
TRUE WARM & WELCOME 2500 R2



NOTE:
G.C./ELECTRICAL SUB TO
COORDINATE WITH PANDA
RESTAURANT PROJECT MANAGER
ON ANY CAMERA LOCATIONS TO BE
ADDED AND/OR OMITTED.

ACTUAL QUANTITY OF CAMERAS TO
BE VERIFIED BY G.C./ELECTRICAL
SUB WITH THE FOLLOWING CAMERA
VENDOR CONTACT.

JOHN STRAIN
INTERFACE SECURITY SYSTEMS
PHONE: 314-708-9878
EMAIL: john.strain@interfacesys.com



CONDUIT ROUGH-IN DETAIL 2
NOT TO SCALE E-102

SECURITY CAMERA PLAN 1
Scale= 1/4" = 1'-0" E-102

- | | | |
|---|-----------------------|-------|
| # | ROOF PLAN KEYED NOTES | 3 |
| | NOT TO SCALE | E-104 |

- ① DISCONNECT SWITCH PROVIDED WITH UNIT.
- ② COMBINATION 30A. 2P. 2F. WP DISCONNECT SWITCH WITH RK5 FUSES PER MANUFACTURER RECOMMENDATION.
- ③ COMBINE CIRCUITRY IN 1" CONDUIT FROM J-BOX ON EQUIPMENT DISCONNECT SWITCH SUPPORT.
REFER TO DETAIL THIS SHEET, 1/E-104.
- ④ ELECTRICAL FEEDS ARE TO BE ROUTED FROM PLENUM SPACE, UP THROUGH EQUIPMENT CURB, INTO BOTTOM OF EQUIPMENT, THROUGH FACTORY INSTALLED WATER TIGHT CONNECTIONS.

ROOF POWER PLAN	1
1/4" = 1'-0"	E-104



- COORDINATE NEW SERVICE ENTRANCE EQUIPMENT, EXISTING UTILITY TRANSFORMER AND PRIMARY SERVICE INFORMATION AND NEW SECONDARY SERVICE WITH THE SERVING UTILITY COMPANY AND COMPLY AS REQUIRED.
- CONTRACTOR TO BE RESPONSIBLE FOR COORDINATING AND PROVIDING REQUIRED WORK FOR SUPPLYING ELECTRICAL POWER AND TELEPHONE AND CABLE UTILITIES TO THE BUILDING.
- CONTRACTOR SHALL HAVE ALL EXISTING UNDERGROUND UTILITIES LOCATED PRIOR TO TRENCHING. ALL UNDERGROUND UTILITIES DAMAGED DURING TRENCHING SHALL BE REPAIRED TO THE SATISFACTION OF THE INVOLVED UTILITY AT THE CONTRACTOR'S EXPENSE.
- MINIMUM CONDUCTOR SIZE ON THIS SHEET SHALL BE #10 CU, 1" CONDUIT.

SITE PLAN GENERAL NOTES

2

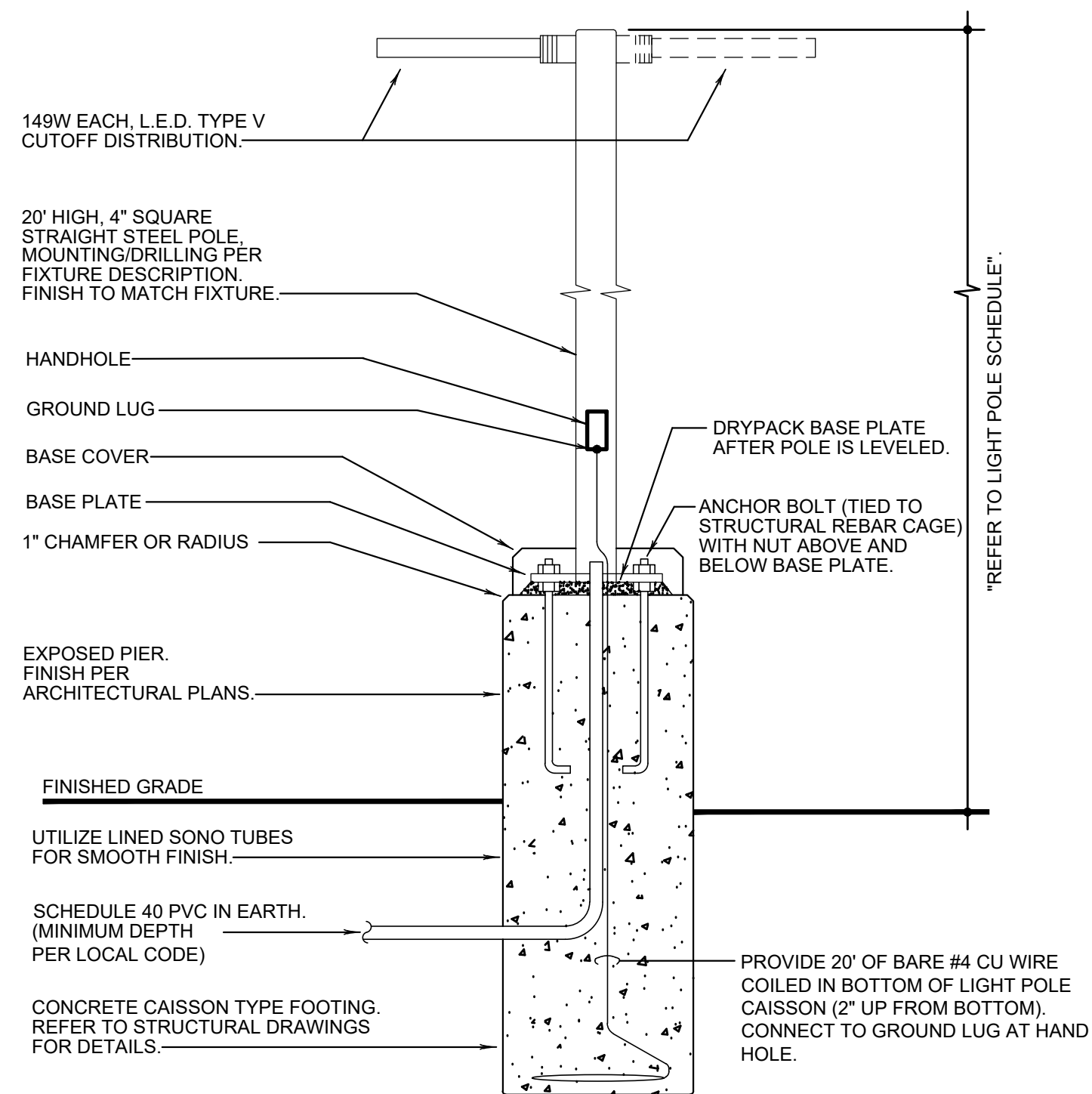
E-105

- FEED THRU LIGHTING CONTACTOR. REFER TO DETAIL 11/E-400.
- STUB UP LOCATION FOR (3) 3/4" CONDUITS & PULL STRINGS, TO ENTER BUILDING & UP TO 6" ABOVE CEILING. REFER TO SHEET 1/E-401.
- STUB-UP LOCATION FOR MENU BOARD. SIGN DISCONNECT PROVIDED BY SIGN CONTRACTOR. COORDINATE PRECISE LOCATION WITH ARCHITECT / OWNER.
- DRIVE-THRU SENSOR LOOP. COORDINATE LOCATION. REFER TO DETAIL 1/E-401.
- STUB-UP FOR DRIVE-THRU ORDER CONFIRMATION MONITOR. COORDINATE LOCATION WITH ARCHITECT / OWNER.
- STUB-UP LOCATION FOR DIRECTIONAL SIGN. ELECTRICAL. COORDINATE EXACT LOCATION WITH ARCHITECT / OWNER. CONNECT TO EXTERIOR BUILDING SIGN TIME CONTROLLER. REFER TO DETAIL 11/E-400.
- REFER TO POLE BASE DETAIL 4/E-105.
- CABLE PULL BOX. REFER TO DETAIL 1/E-100. INSTALL MINIMUM 3' FROM SIDEWALK. DO NOT INSTALL IN SIDEWALK CONCRETE.
- REFERENCE DETAIL 1/E-400 FOR SERVICE GROUNDING DETAIL.
- COORDINATE INSTALLATION OF POLE BASE WITH RETAINING WALL INSTALLER.

SITE PLAN KEYED NOTES

3

E-105



NOTE: THIS DETAIL IS FOR ELECTRICAL INSTALLATION ONLY. REFER TO STRUCTURAL DRAWINGS FOR MORE INFORMATION.

POLE MOUNTING DETAILS

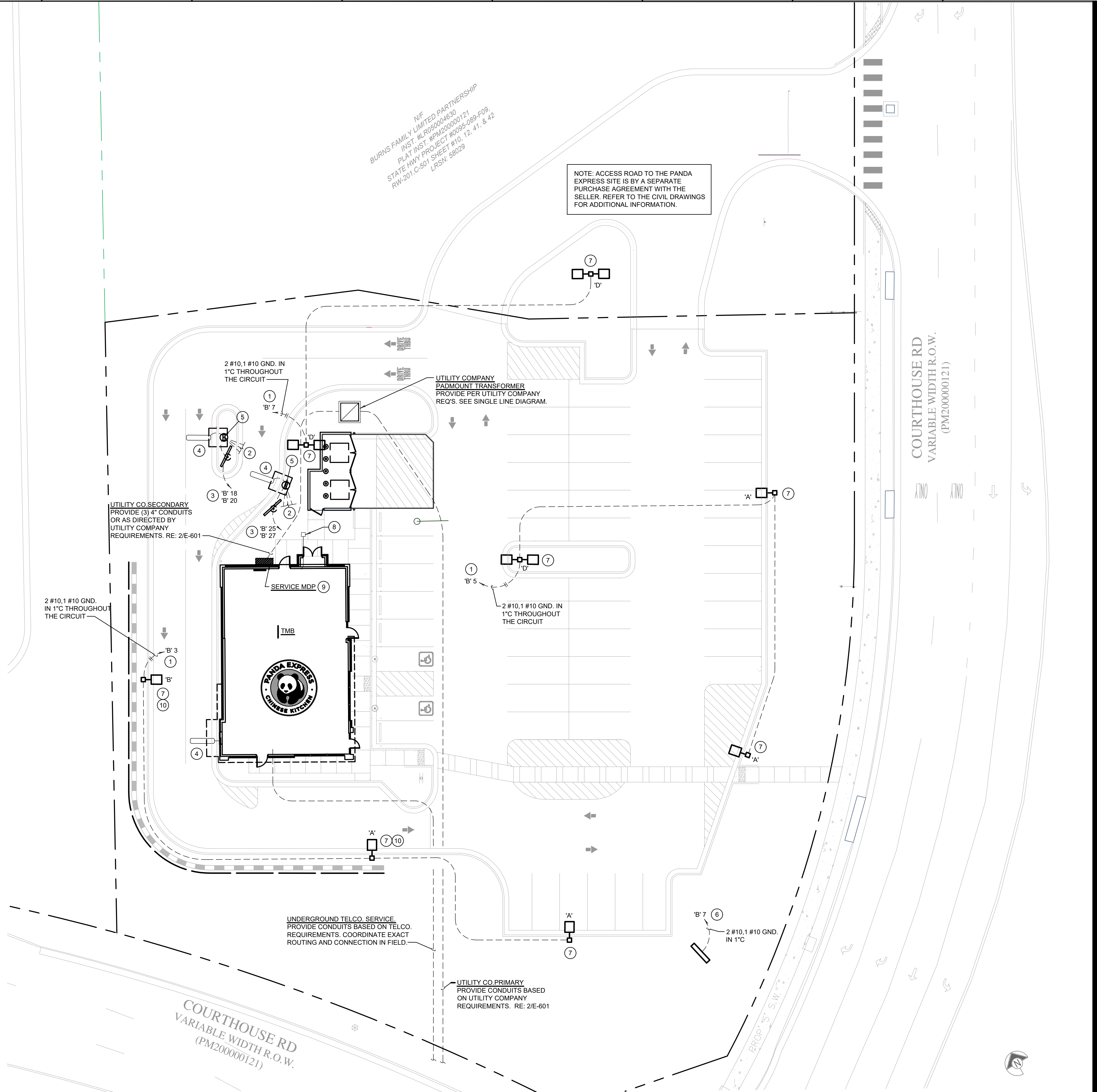
4

E-105

NO SCALE

NIF
BURNS FAMILY LIMITED PARTNERSHIP
INST. #L P050004830
PLAT INST. #PM200000121
STATE HWY PROJECT #10, 12, 41, & 42
RW 201.C-501 SHEET #10, 12, 41, & 42
LRSN: 58029

NOTE: ACCESS ROAD TO THE PANDA EXPRESS SITE IS BY A SEPARATE PURCHASE AGREEMENT WITH THE SELLER. REFER TO THE CIVIL DRAWINGS FOR ADDITIONAL INFORMATION.



SITE & EXTERIOR LIGHTING PLAN

1

E-105

1" = 16'-0"



PANDA EXPRESS, INC.
1683 Walnut Grove Ave.
Rosemead, California
91770
Telephone: 626.799.9898
Facsimile: 626.372.8288

All ideas, designs, arrangement and plans indicated or represented by this drawing are the property of Panda Express Inc. and were created for use on this specific project. None of these ideas, designs, arrangements or plans may be used by or disclosed to any person, firm, or corporation without the written permission of Panda Express Inc.

REVISIONS:

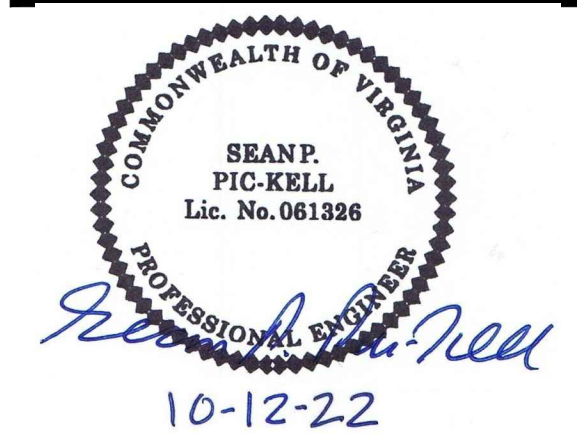
NO.	DESCRIPTION	DATE

ISSUE DATE:

PERMIT / BID SET	DATE

DRAWN BY: G. COLLINS

PANDA PROJECT #: D8675
ARCH PROJECT #: JCDT21-0221-00



PANDA EXPRESS
TRUE WARM & WELCOME
1121 COURTHOUSE RD.
STAFFORD, VA 22554

E-105

SITE & EXTERIOR LIGHTING PLAN

TRUE WARM & WELCOME 2500 R2

Schedule										
Symbol	Label	Quantity	Catalog Number	Description	Filename	Lumens Per Lamp	Lumen Multiplier	Light Loss Factor	Wattage	Efficiency
<div><div></div><div></div></div>	A	4	SLM-LED-18L-SIL-FT-40-70CRI-IL	CONTACT RYAN ZINSELMEIER-314-531-2600	SLM-LED-18L-SIL-FT-40-70CRI-IL.ies	12046	1	1	148.5	100%
<div><div></div><div></div></div>	B	1	SLM-LED-18L-SIL-3-40-70CRI-IL	CONTACT RYAN ZINSELMEIER-314-531-2600	SLM-LED-18L-SIL-3-40-70CRI-IL.ies	13767	1	1	148.5	100%
<div><div></div><div></div><div></div></div>	D	3	SLM-LED-18L-SIL-FT-40-70CRI-IL	CONTACT RYAN ZINSELMEIER-314-531-2600	SLM-LED-18L-SIL-FT-40-70CRI-IL.ies	12046	1	1	297	100%

NOTE: ACCESS ROAD TO THE PANDA EXPRESS SITE IS BY A SEPARATE PURCHASE AGREEMENT WITH THE SELLER. REFER TO THE CIVIL DRAWINGS FOR ADDITIONAL INFORMATION.

SITE LIGHTING FIXTURE SCHEDULE	
3	NO SCALE
E-106	

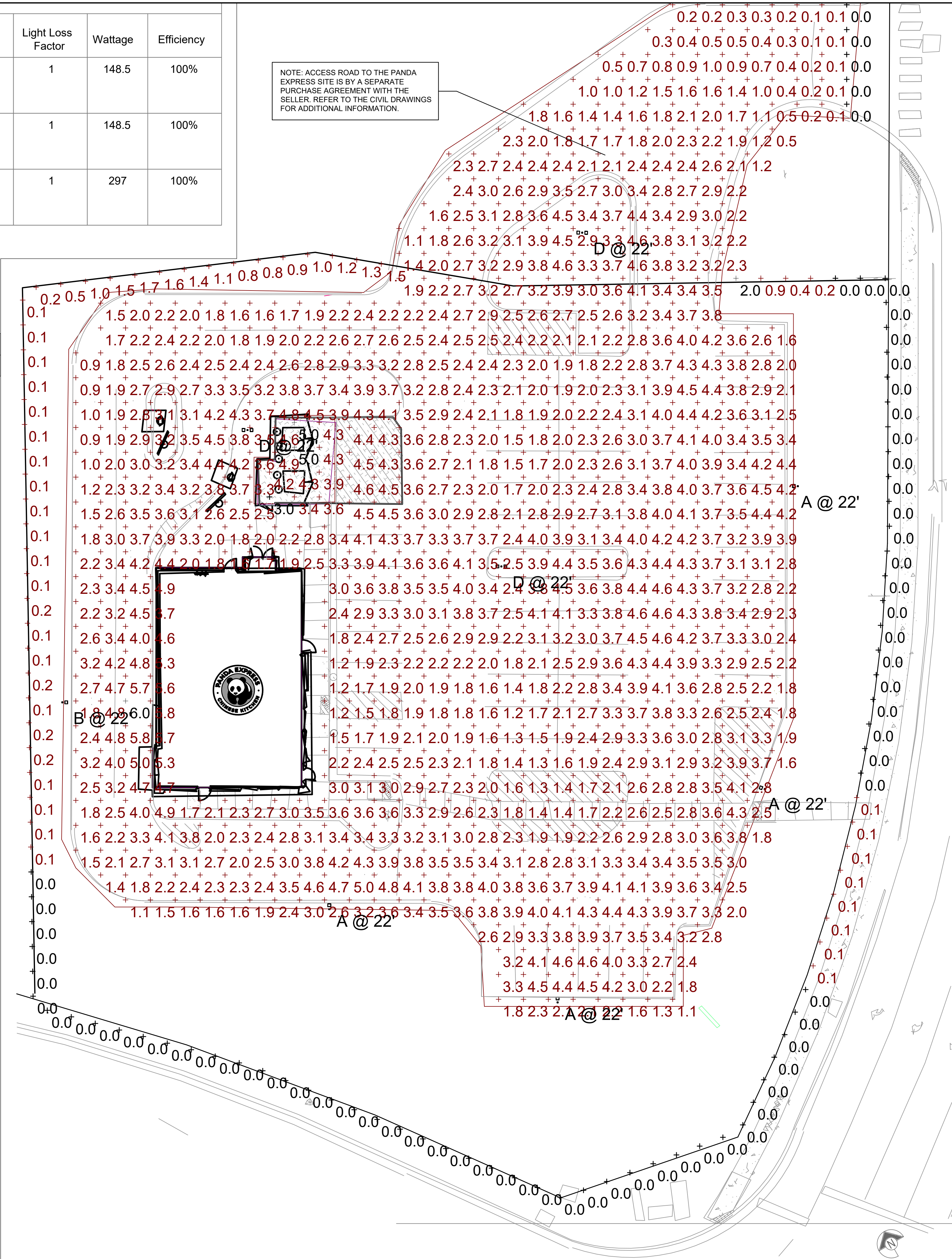
Statistics						
Description	Symbol	Avg	Max	Min	Max/Min	Avg/Min
TRASH ENCLOSURE	+	4.1 fc	5.0 fc	3.0 fc	1.7:1	1.4:1
CALC SUMMARY- PAVED SURFACE	+	2.8 fc	6.0 fc	0.0 fc	N/A	N/A
CALC SUMMARY- PROPERTY LINE	+	0.2 fc	2.0 fc	0.0 fc	N/A	N/A

Note

1. MOUNTING HEIGHT OF 22' (20'POLE)

2. CALCULATIONS TAKEN AT GROUND LEVEL

3.CONTACT VILLA LIGHTING- RYAN ZINSELMEIER- RYAN.ZINSELMEIER@VILLALIGHTING.COM- 314-531-2600



PANDA EXPRESS SITE LIGHTING CALCULATION SUMMARY	
2	NO SCALE
E-106	

SITE PHOTOMETRIC PLAN	
1	N.T.S.
E-106	



PANDA EXPRESS, INC.
1683 Walnut Grove Ave.
Rosemead, California
91770
Telephone: 626.799.9898
Facsimile: 626.372.8288

All ideas, designs, arrangement and plans indicated or represented by this drawing are the property of Panda Express Inc. and were created for use on this specific project. None of these ideas, designs, arrangements or plans may be used by or disclosed to any person, firm, or corporation without the written permission of Panda Express Inc.

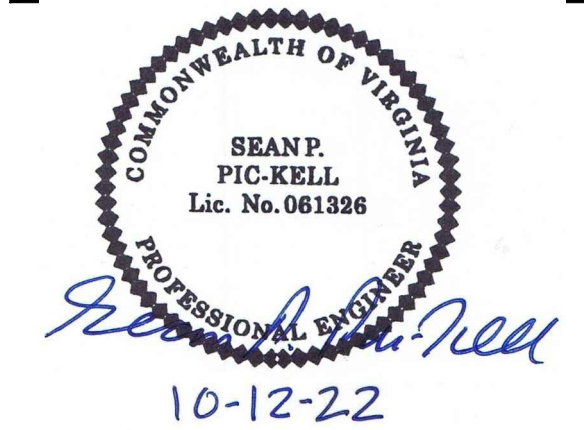
REVISIONS:

ISSUE DATE:

PERMIT / BID SET 10-12-22

DRAWN BY: G. COLLINS

PANDA PROJECT #: D8675
ARCH PROJECT #: JCDT21-0221-00

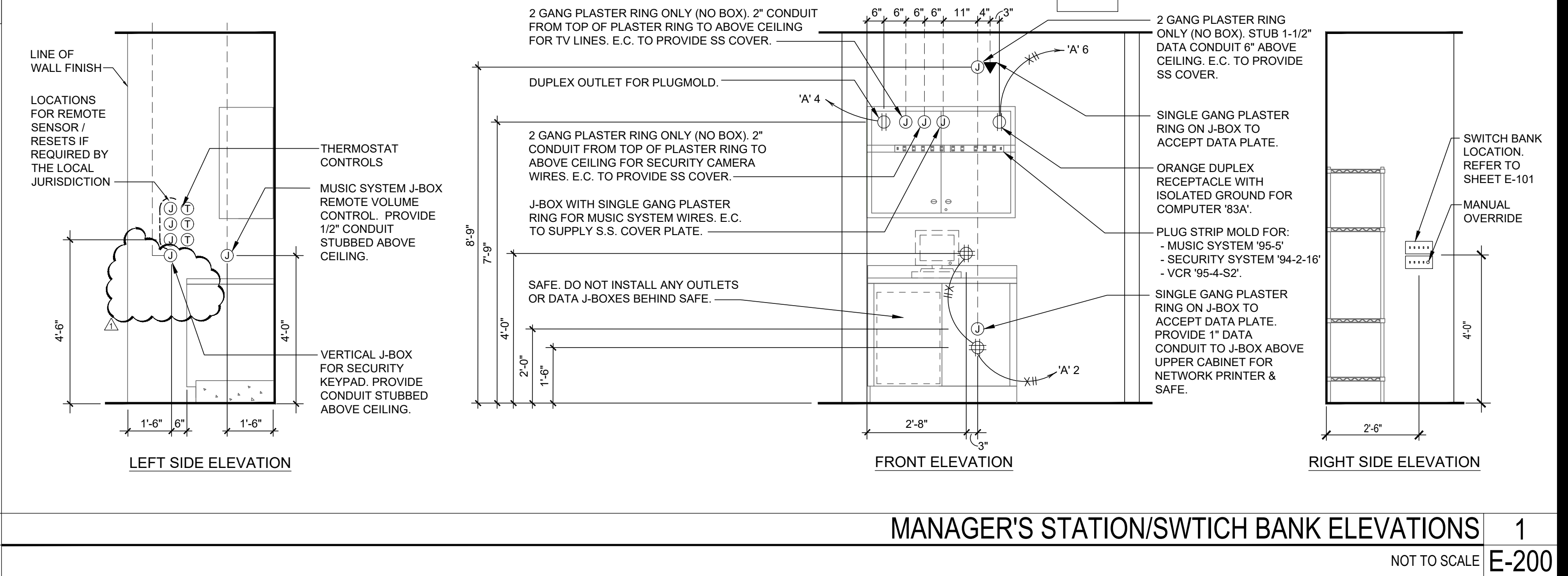
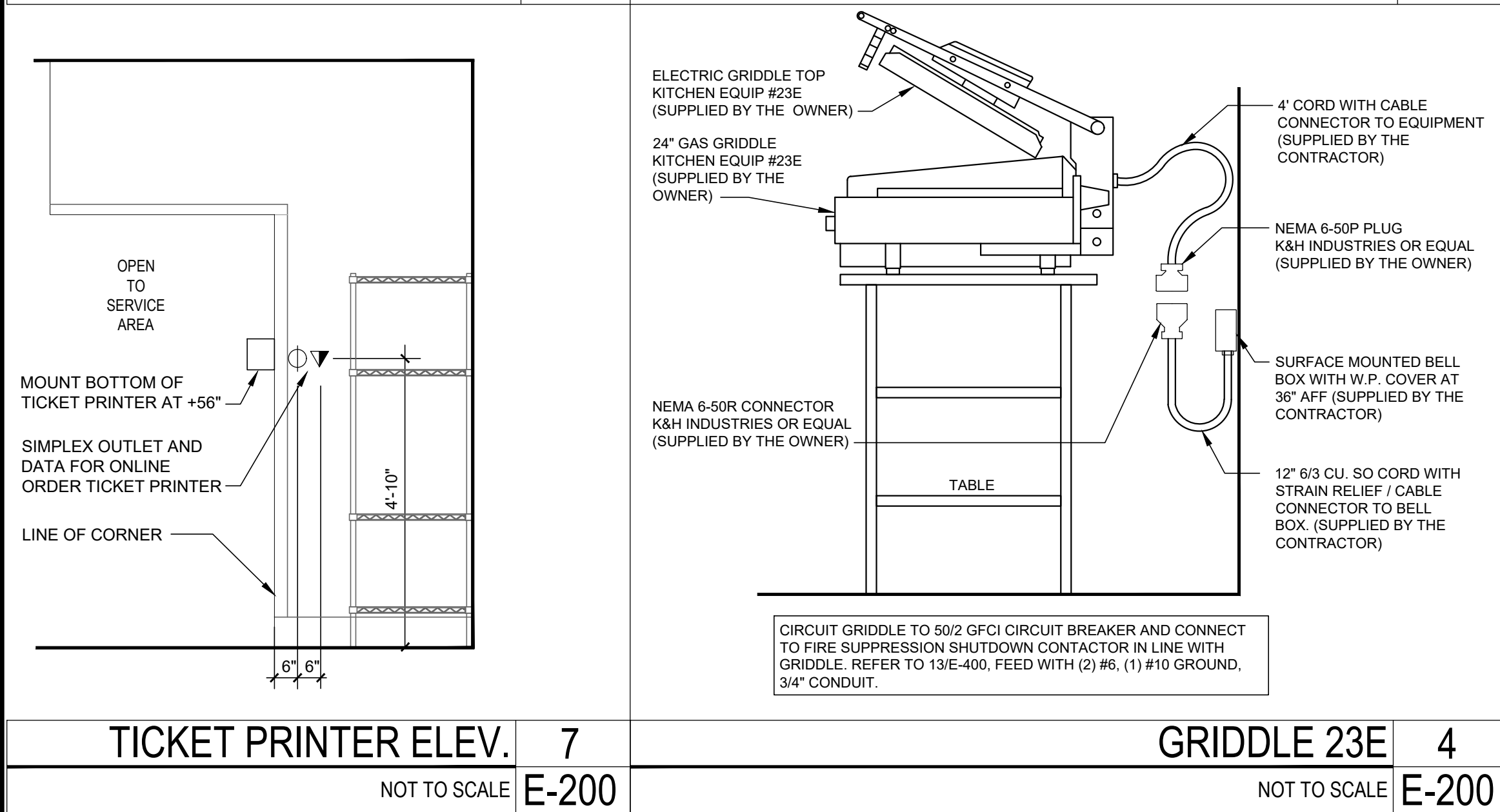
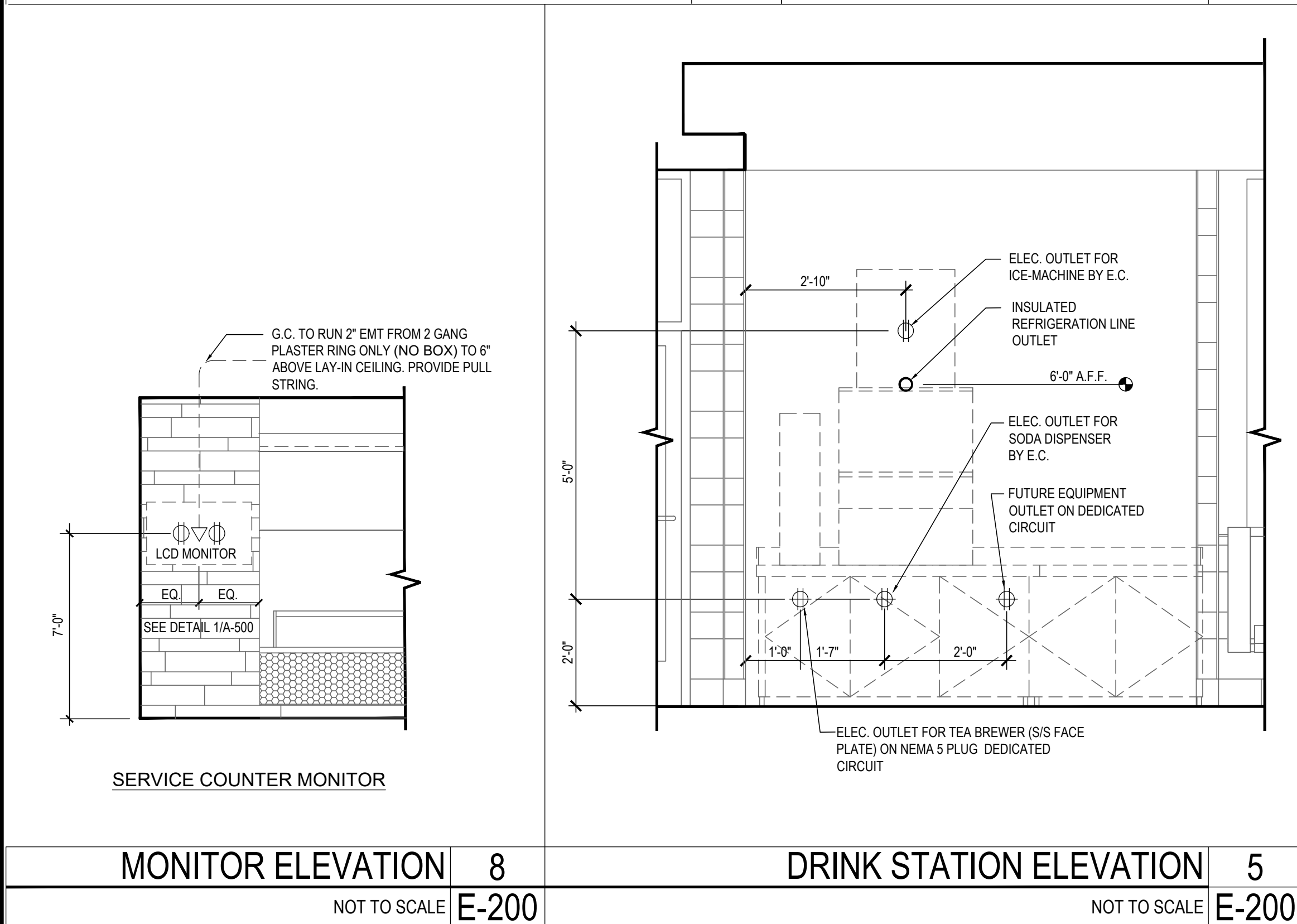
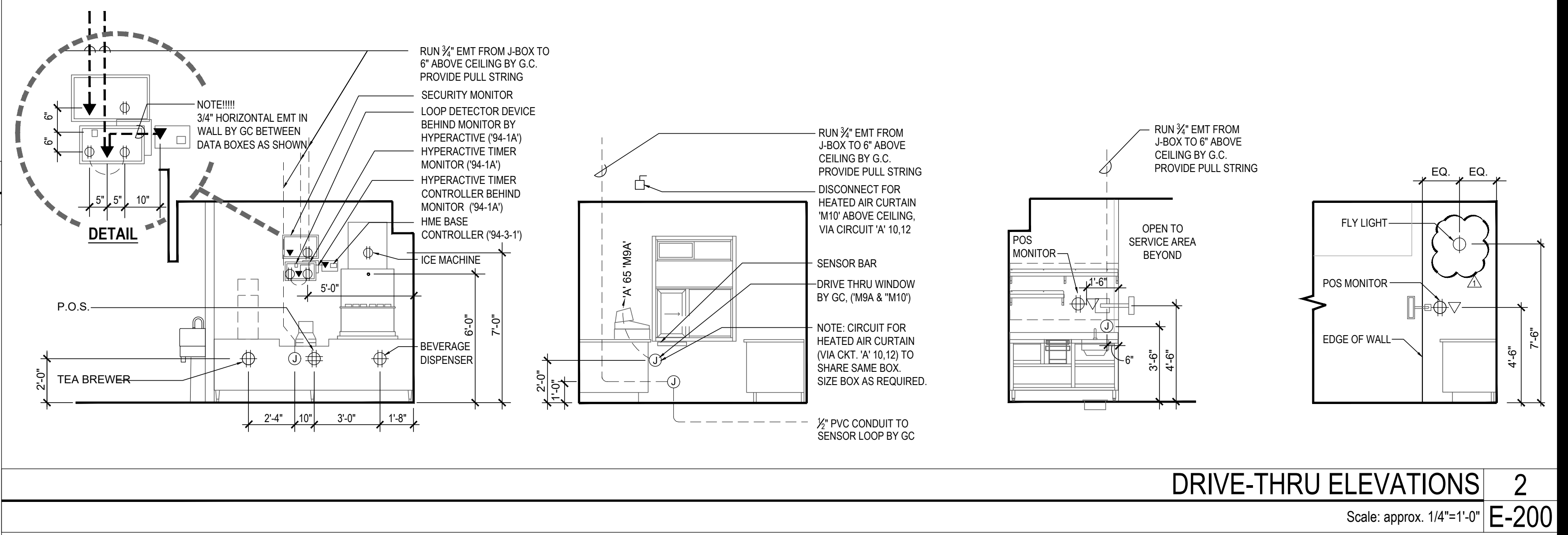
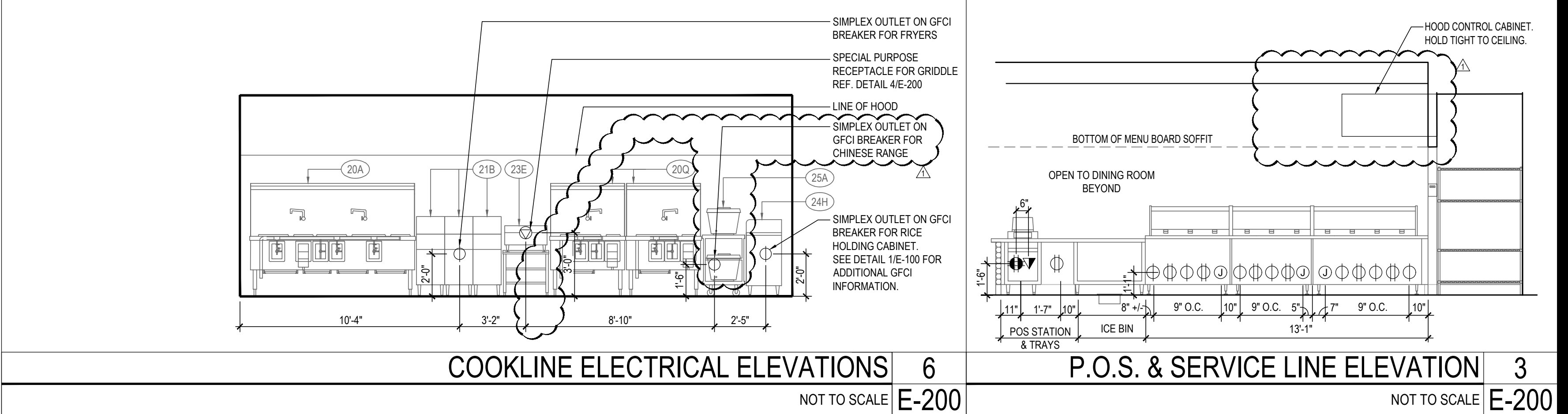
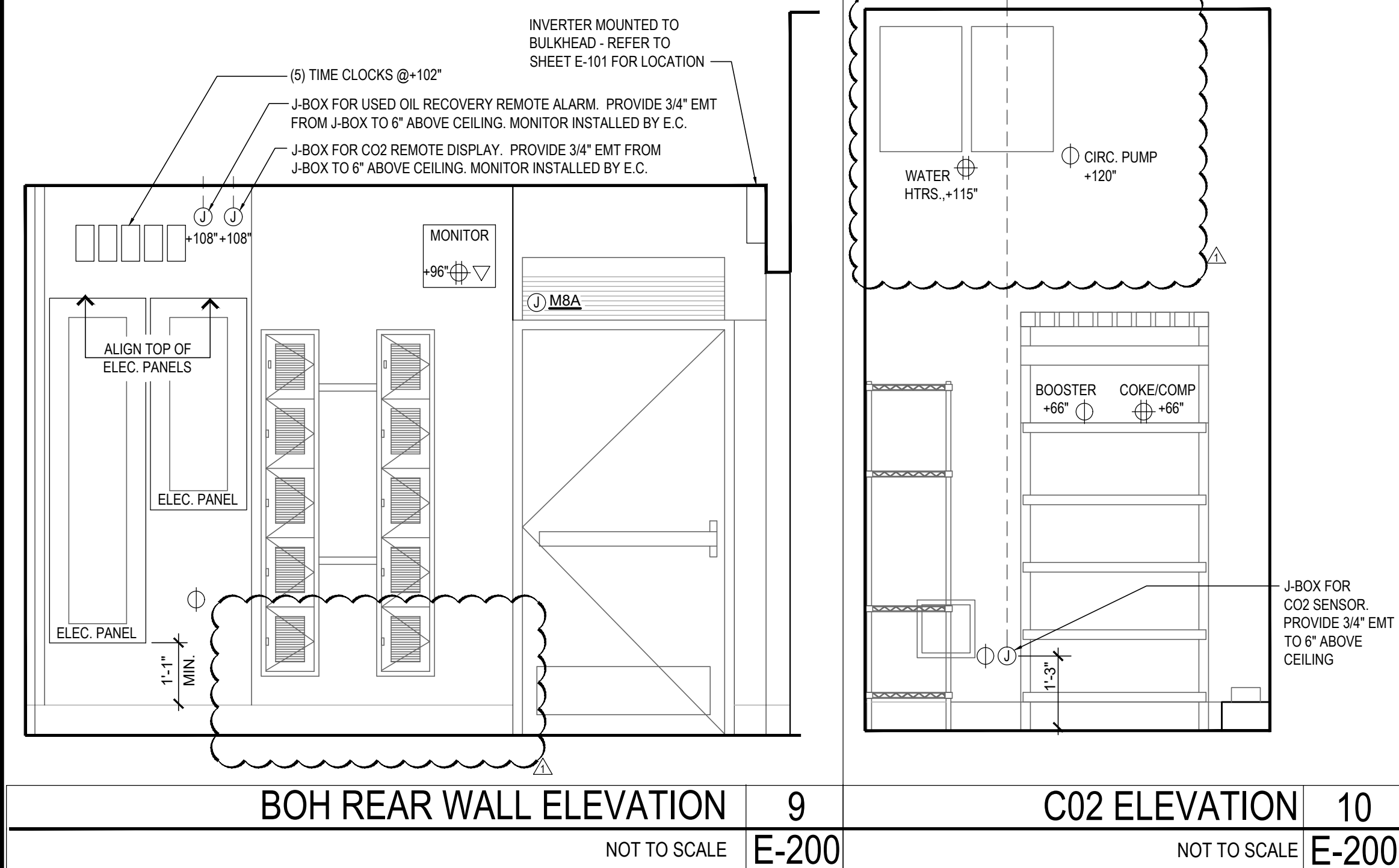


PANDA EXPRESS
TRUE WARM & WELCOME
1121 COURTHOUSE RD.
STAFFORD, VA 22554

E-106

SITE PHOTOMETRIC PLAN

TRUE WARM & WELCOME 2500 R2



All ideas, designs, arrangement and plans indicated or represented by this drawing are the property of Panda Express Inc. and were created for use on this specific project. None of these ideas, designs, arrangements or plans may be used by or disclosed to any person, firm, or corporation without the written permission of Panda Express Inc.

REVISIONS:

	PERMIT RESPONSE 01	02/07/2023
---	--------------------	------------

ISSUE DATE:

PANDA PROJECT # 00075

Downloaded from <http://ajph.org/> at University of California, San Diego on June 11, 2015

COM. SEAN P.
PIC-KELL
Lic. No. 061326

2-8-23

ARCHITECTS ENGINEERS PLANNERS

TRUE WARM & WELCOME
1121 COURTHOUSE RD.

E-200



PANDA EXPRESS, INC.
1683 Walnut Grove Ave.
Rosemead, California
91770
Telephone: 626.799.9898
Facsimile: 626.372.8288

All ideas, designs, arrangement and plans indicated or represented by this drawing are the property of Panda Express Inc. and were created for use on this specific project. None of these ideas, designs, arrangements or plans may be used by or disclosed to any person, firm, or corporation without the written permission of Panda Express Inc.

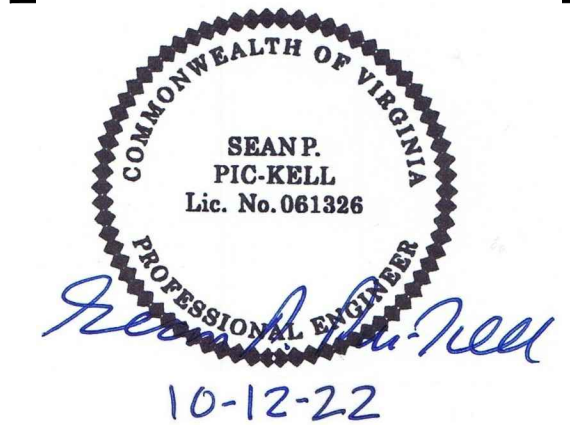
REVISIONS:	

ISSUE DATE:	
PERMIT / BID SET	10-12-22

DRAWN BY: G. COLLINS

PANDA PROJECT #: D8675

ARCH PROJECT #: JCDT21-0221-00

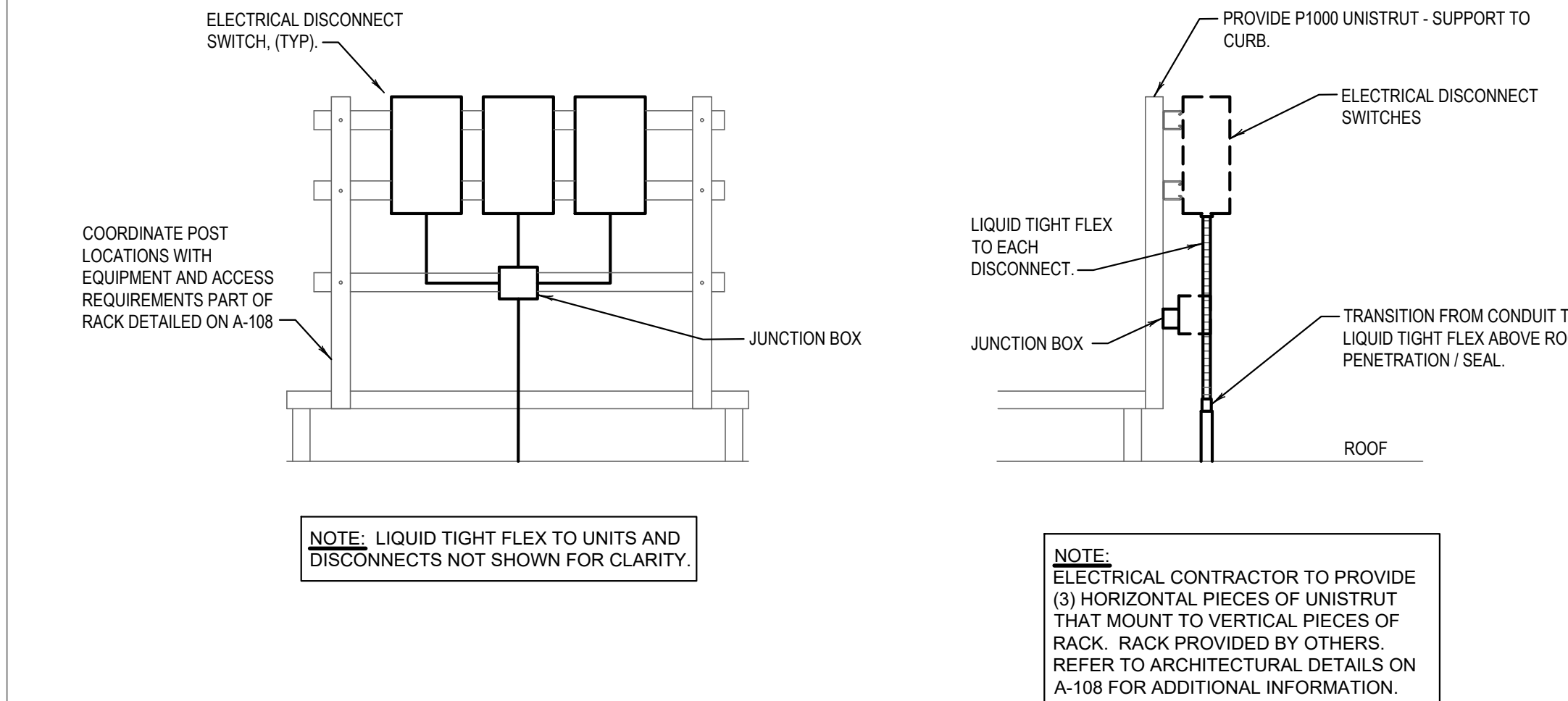


PANDA EXPRESS
TRUE WARM & WELCOME
1121 COURTHOUSE RD.
STAFFORD, VA 22554

E-401

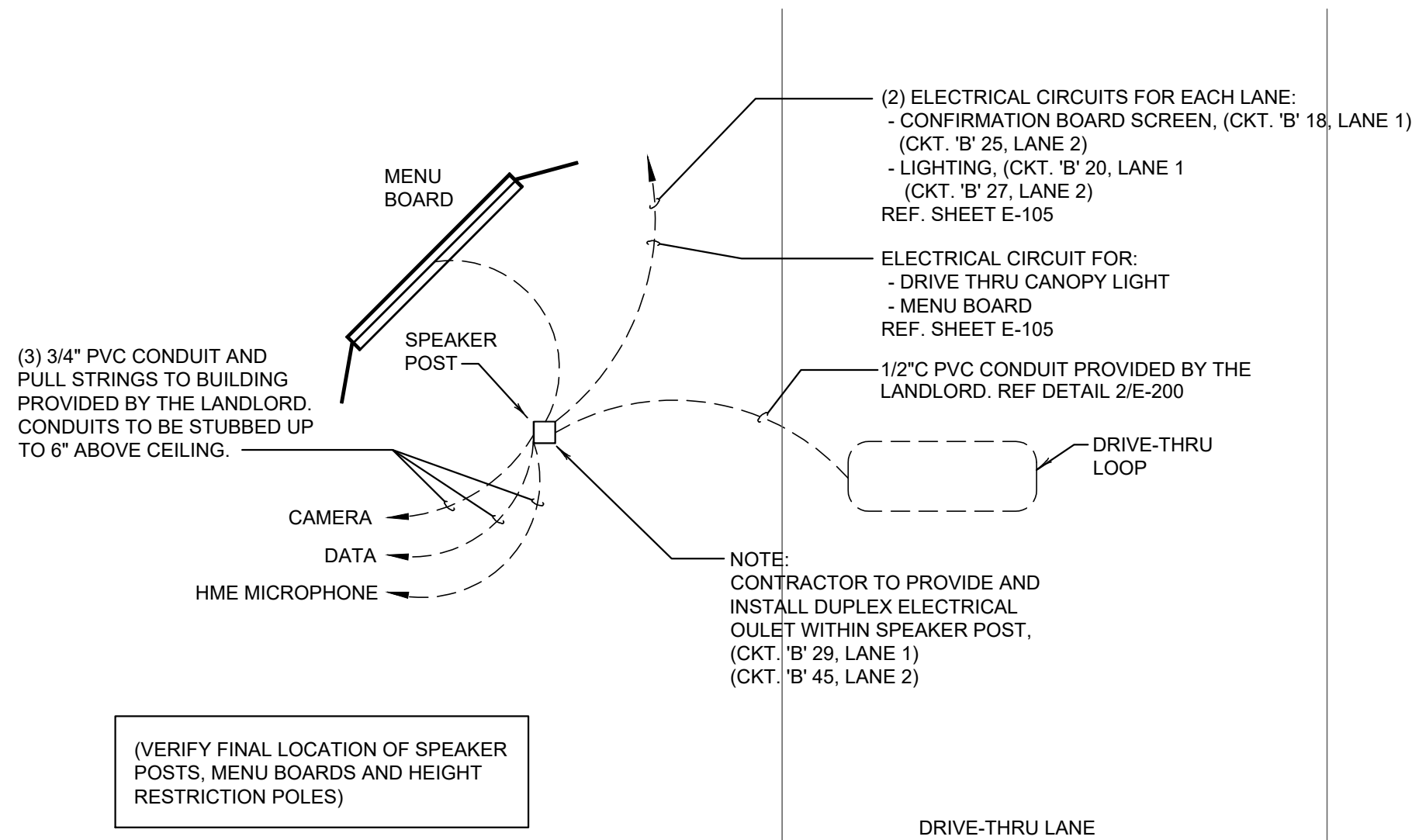
ELECTRICAL DETAILS, DIAGRAMS

TRUE WARM & WELCOME 2500 R2



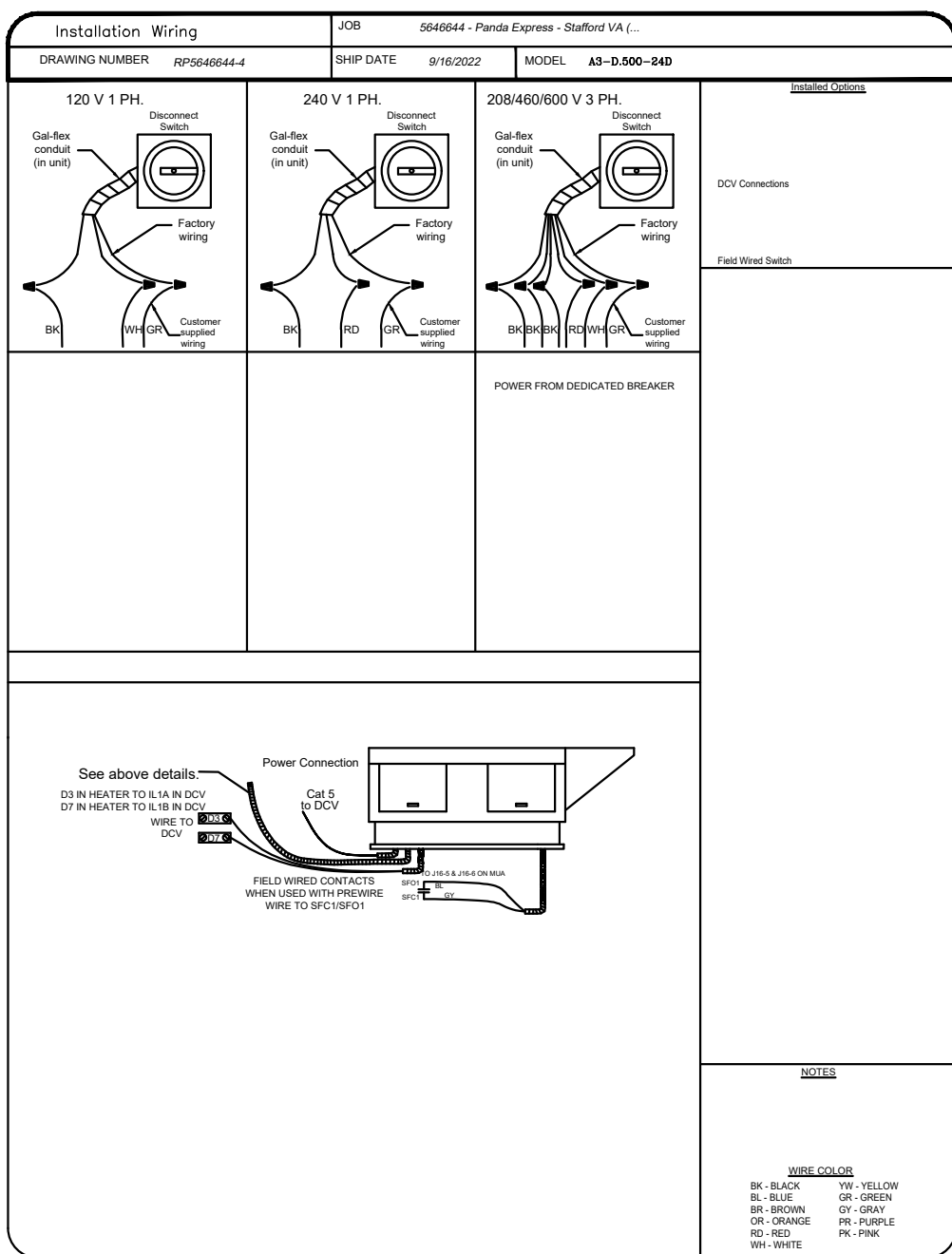
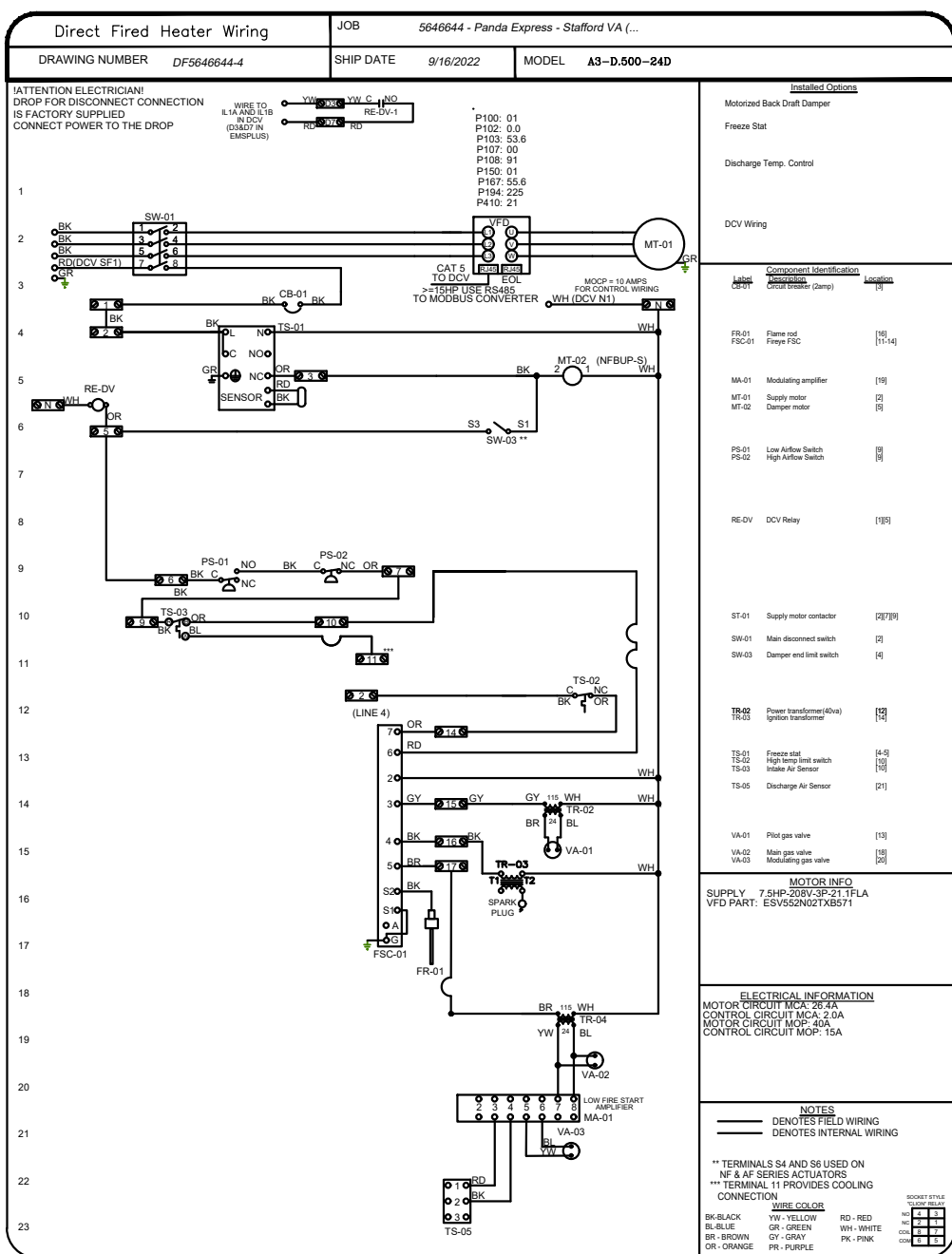
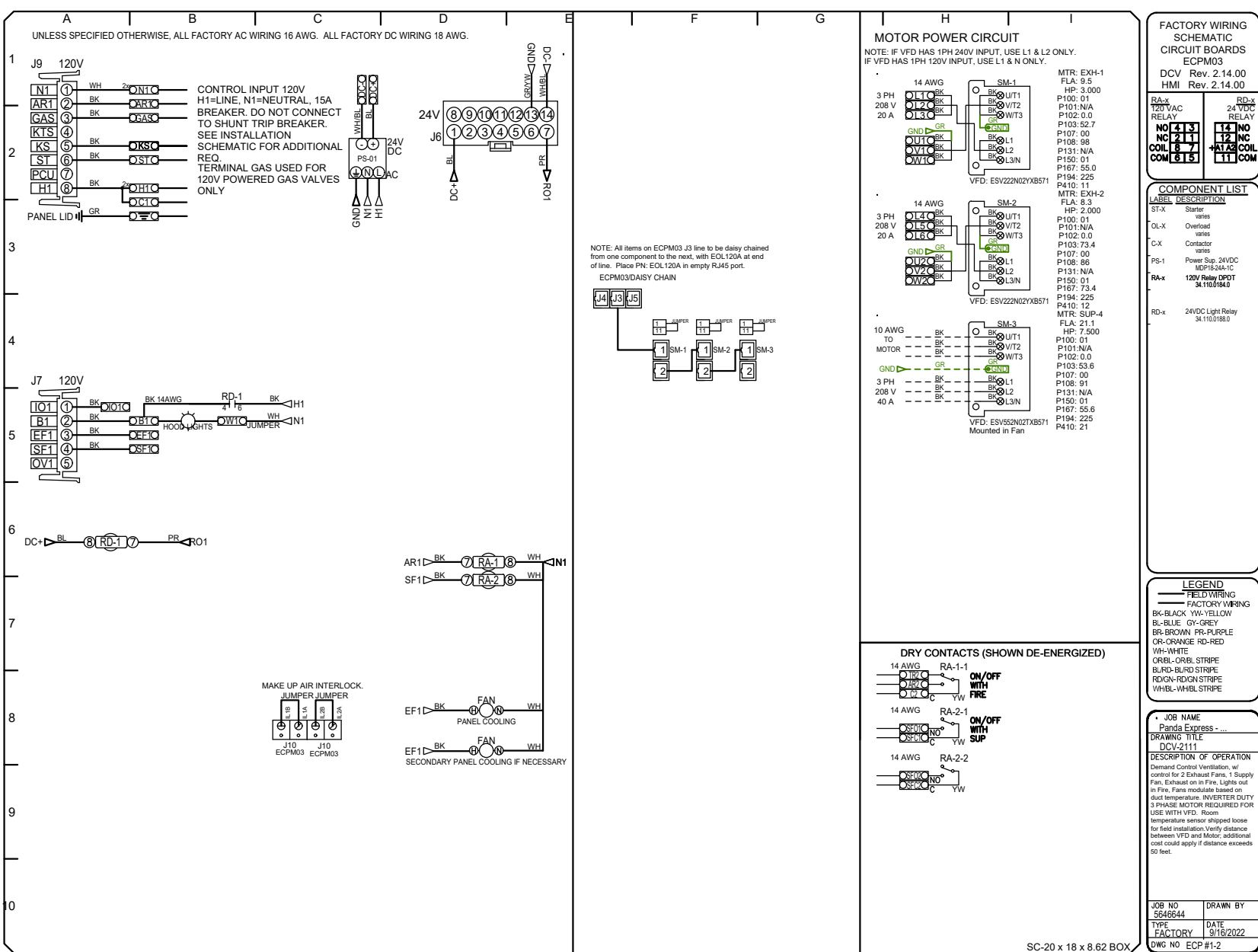
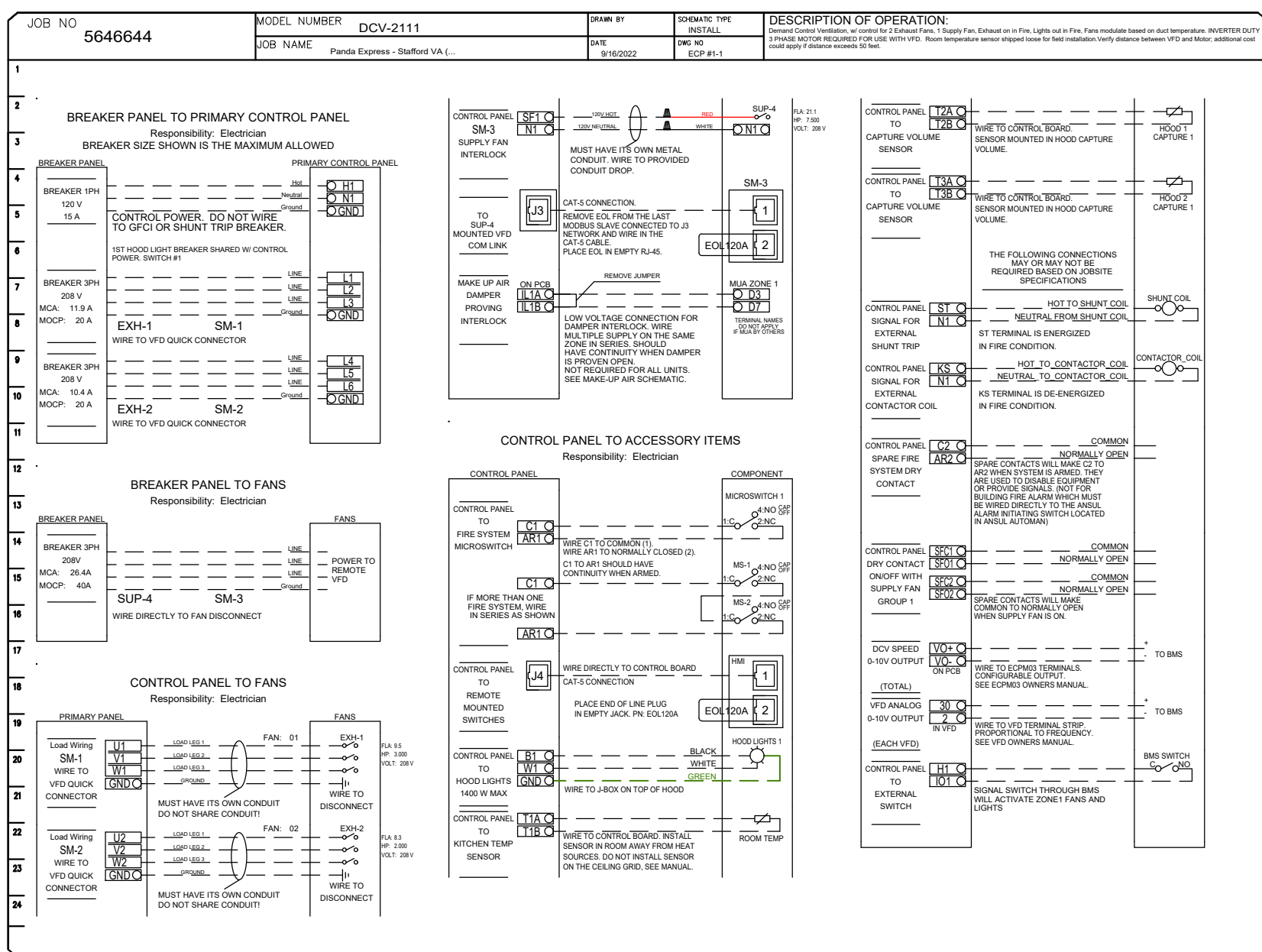
EQUIPMENT DISCONNECT SWITCH SUPPORT 2

NOT TO SCALE E-401



MENU BOARD & SENSOR LOOP - TYPICAL FOR EACH LANE 1

NOT TO SCALE E-401



KITCHEN EXHAUST SYSTEM DIAGRAM 3

NOT TO SCALE E-401

PANELBOARD										A	SCHEDULE													
		VOLTAGE:		208Y/120V		MAINS		400 MLO				MOUNTING		RECESSED		REMARKS: PROVIDE GRD BAR & ISOLOATED GRD BAR								
		BUS SIZE:		400		AMP		TOTAL LOAD		143.6 KVA						SERIES RATED 65 /10K A I.C.								
		WIRE						LOAD (KVA)		BRKR		PH		BRKR		LOAD (KVA)		WIRE						
No.	SERVICES	SIZE	LTG	RCPT	MTR	A/C	HTG	KITCH	TRIP	P	A	B	C	P	TRIP	KITCH	HTG	A/C	MTR	RCPT	LTG	SIZE	SERVES	No.
1	WIC DISPLAY LTS/MENUBRD/LIED	12	0.4						20	1				1	20	1.1						12	FAX '87, MGR '84C, COMP '99A'	2
3	HOOD CONTROL PANEL 'M4'	12						0.5	20	1				1	20				0.6			12	MUSIC, VCR, MONITOR	7
5	SERVICE POS '94, PTR '86A' (2,6)	12		1.1					20	1				1	20				0.5			12	COMPUTER RECEIPT '83A' (2)	1
7	D.T. POS '94/PTRS '86A' (2,6)	12							20	1				1	20	0.2						12	DRIVE THRU '10J' ICE MACHINE (6)	8
9	95-4-S3, FLY LIGHT, CO2 (1,6)	12		0.8					20	1				2	30		3.0					10	DRIVE THRU CHF-25 'M10'	10
11	RICE WARMER '54A' (1,4)	12					0.2	20	1								3.0						HEATED AIR CURTAIN	12
13	REF. PREP TABLE '34O' (1)	12					1.8	20	1					2	30		3.0					10	REAR DOOR - 'M8A'	14
15	REF. PREP TABLE '34D' (1)	12					1.1	20	1								3.0						HEATED AIR CURTAIN	16
17	UNDERCTR FREEZER '30L' (1,4)	12					1.1	20	1					1	20				0.2			12	FIRE SUPPRESSION SHUTDOWN	18
19	DINING BEV. DISPENSER '4AB' (1)	12					1.1	20	2					1	20	1.3						10	INDUCT DRY WELL '3F', '3G' (1,4,6)	20
21	SERVINGS COUNTER	12		0.2					20	1				1	20	1.3						10	INDUCT DRY WELL '3F', '3G' (1,4,6)	22
23	DINING ICE TEA BREWER '9D'	12						1.8	20	1				1	20	1.3						10	INDUCT DRY WELL '3F', '3G' (1,4,6)	24
25	FOOD PROCESSOR '53'	12						1.2	20	1				1	20	1.3						10	INDUCT DRY WELL '3F', '3G' (1,4,6)	26
27	ROOF DRAIN HEAT TAPE (5)	12					0.8		20	1				1	20	1.3						10	INDUCT DRY WELL '3F', '3G' (1,4,6)	28
29	WALK-IN COOLER COIL '31M' (1)	12			0.3				20	1				1	20	1.3						10	INDUCT DRY WELL '3F', '3G' (1,4,6)	30
31	RICE HOLD. CABINET '24H' (1,4,6)	12						1.8	20	1				1	20	1.3						10	INDUCT DRY WELL '3F', '3G' (1,4,6)	32
33	FUTURE CONTROLS (1,6)	12						0.4	20	1				1	20	0.9						12	RADIANT TOP HEATER 'IS2B1' (1)	34
35	TIME CLOCK	12		0.1					20	1				1	20	0.9						12	RADIANT TOP HEATER 'IS2B1' (1)	36
37	4B' BOOSTER OUTLET (6)	12						0.9	20	1				1	20	1.1						12	RADIANT TOP HEATER 'IS2B2' (1)	38
39	HEAT WRAP '32-S7' (4)	12					0.5		20	1				2	50	3.8						6	ELECTRIC GRIDDOLE - '23E' (1,6,8)	40
41	DRIVE THRU FLY LIGHT (6)	12		0.2					20	1						3.8								42
43	DUCT DETECTORS	12		0.2					20	1				1	20	0.9						12	FRYER '21B MJ345' (1,6)	44
45	LIGHTING - FOOD PREP / EF-3 (4)	10	1.1		0.3				20	1				1	20								SPARE	46
47	LIGHTING DINING AREA	10	0.3						20	1				2	15	1.4						12	MICROWAVE - '55A'	48
49	SHOW WINDOW RECEPTACLES	12		1.0					20	1						1.3								50
51	GENERAL RECEPTACLES	12			0.7				20	1				1	20	0.2						12	DINING FUTURE EQUIPMENT	54
53	EXT. RECEPTACLES, IRRIGATION	12		0.6					20	1				1	20				0.2			12	GENERAL RECEPTACLE	56
55	ON LINE ORDER SHELF	12		0.4					20	1				2	20				1.2			12	BEVERAGE STATION	58
57	DINING RM. '10J' ICE MACHINE (6)	12					0.2	20	1								1.2						ICE MACHINE COND '10J-S' (1)	58
59	TANKLESS WTR HEATERS 'P3' (6)	12		1.0					20	1				2	40		3.3					10	WALK-IN FREEZER COND '32-S1' (1,7)	60
61	D.T. ICE TEA BREWER '9D' (1,4)	10					1.8	20	1								3.3							62
63	LIGHTING - RESTROOMS	10							20	1				2	35		2.8					10	WALK-IN COOLER COND '31-S1' (1)	64
65	DRIVE THRU WINDOW	10	0.1		0.5				20	1							2.8							66
67	SPARE								20	1								3.6						68
69	DRIVE THRU HOT WELL CABT.(1)								50	2				3	45		3.6					8	RTU-1	70
71	(FUTURE)																3.6							72
73	SPARE								20	1							6.2							74
75	SPARE								20	1							6.2					6	RTU-2	76
77	SPACE								20	1							6.2							78
79	SPACE								1								5.5							80
81	SPACE								1								5.5					6	RTU-3	82
83	SPACE								1								6.2							84
															38.7	13.3	46.6	15.7	18.0	11.3	CONNECTED KVA		143.6	
																					CONNECTED AMP:		398.9	
																					NEC AMPS		372.9	

PANELBOARD										B	SCHEDULE														
VOLTAGE:		208Y/120V		MAINS		225 MLO				MOUNTING		RECESSED		REMARKS: PROVIDE GRD BAR & ISOLOATED GRD BAR RATED 22K A.I.C.											
BUS SIZE:		225 AMP		TOTAL LOAD		55.6 KVA																			
No.	SERVES	WIRE SIZE	LTG	RCPT	MTR	A/C	HTG	KITCH	BRKR	TRIP	P	PH A B C	BRKR	TRIP	KITCH	HTG	LOAD (KVA)	A/C	MTR	RCPT	LTG	WIRE SIZE	SERVES	No.	
1	BUILDING SIGNS / LOGOS (3)	12	1.0							20	1	●		2	20				1.2				10	DRIVE THRU ICE MACHINE	2
3	EXTERIOR POLE MOUNT LTG (3,4)	10	0.5							20	1	●							1.2				10	CONDENSER '10J-S1' (4)	4
5	EXTERIOR POLE MOUNT LTG (3,4)	10	0.6							20	1	●		1	20	0.6							12	USED OIL STORAGE TANK	6
7	EXTERIOR POLE MOUNT LTG (3,4)	10	0.6							20	1	●		2	30		3.0						10	SIDE DOOR 'M8C'	8
9	D.T. BEV. DISPENSER '4AB' (1,4)	10								20	1	●				3.0							10	HEATED AIR CURTAIN	10
11	SECURITY / POS MONITORS	12		0.1						20	1	●				5.7									12
13	HYPERACTIVE TIMER SYSTEM	12	0.1							20	1	●		3	60	5.7						6	DISHWASHER 70D'	14	
15	DINING ROOM TVS	12	0.3							20	1	●				5.7									16
17	OLO TICKET PRINTER	12	0.2							20	1	●									1.2	10	LN 2 DRIVE THRU MENU BOARD (3,4)	18	
19	COKE CARBONATOR	12	0.2							20	1	●		1	20						1.0	10	LN 2 DRIVE THRU ORDER SCREEN (4)	20	
21	SPARE									20	1	●		1	20									SPARE	22
23	BUILDING LIGHTING / EM (3)	12	0.1							20	1	●		1	20									SPARE	24
25	LN 1 DRIVE-THRU MENU BOARD (3,4)	10	1.2							20	1	●						1.1						LN 2 DRIVE THRU MENU BOARD (3,4)	26
27	LN 1 DRIVE THRU ORDER SCREEN (4)	10	1.0							20	1	●		3	15			1.1				12	EXHAUST FAN EF-1	28	
29	TRU CONVENIENCE RECEPES	12		0.6						20	1	●						1.1							30
31	CANOPY LIGHTING (3)	12	0.2							20	1	●						1.0							32
33	CANOPY LIGHTING (3)	12	0.2							20	1	●		3	15			1.0				12	EXHAUST FAN EF-2	34	
35	EXTERIOR MOTION SECURITY LED	12	0.7							20	1	●						1.0							36
37	THAWING CABINET	12						1.5			2	●		3	40			3.1							38
39								1.5				●						3.1							40
41	SPARE									20	1	●						3.1							42
															21.8	6.0	0.0	18.0	1.5	8.3			CONNECTED KVA		55.6
																						NEC KVA		51.0	
																						NEC AMPS		141.7	

PANELBOARD										MDP				SCHEDULE									
VOLTAGE: 208Y/120V BUS SIZE: 600 AMP										MAINS 600 MCB TOTAL LOAD 199.2 KVA				MOUNTING		EXTERIOR SURFACE		REMARKS: W/ GRD BAR & ISOLATED GRD BAR RATED 65k A.I.C., NEMA 3R					
No.	SERVES	WIRE SIZE	LOAD (KVA)					BRKR TRIP	P	PH			BRKR TRIP	P	KITCH	HTG	A/C	MTR	RCPT	LTG	WIRE SIZE	SERVES	No.
			LTG	RCPT	MTR	A/C	HTG			KITCH	A	B											
1																							2
3	PANEL 'A' (8)	11.3	18.0	15.7	46.6	13.3	38.7	400	3	●	●	●										SPACE	4
5										●	●	●											6
7										●	●	●											8
9	PANEL 'B' (8)	8.3	1.5	18.0	0.0	6.0	21.8	200	3	●	●	●										SPACE	10
11										●	●	●											12
13										●	●	●											14
15	SPACE									●	●	●										SPACE	16
17										●	●	●											18
															60.5	19.3	46.6	33.7	19.5	19.6		CONNECTED KVA	199.2
															39.3	19.3	46.6	19.3	15.7	24.5		NEC KVA	185.8
																					AMPS	515.8	

PANELBOARD NOTES ()

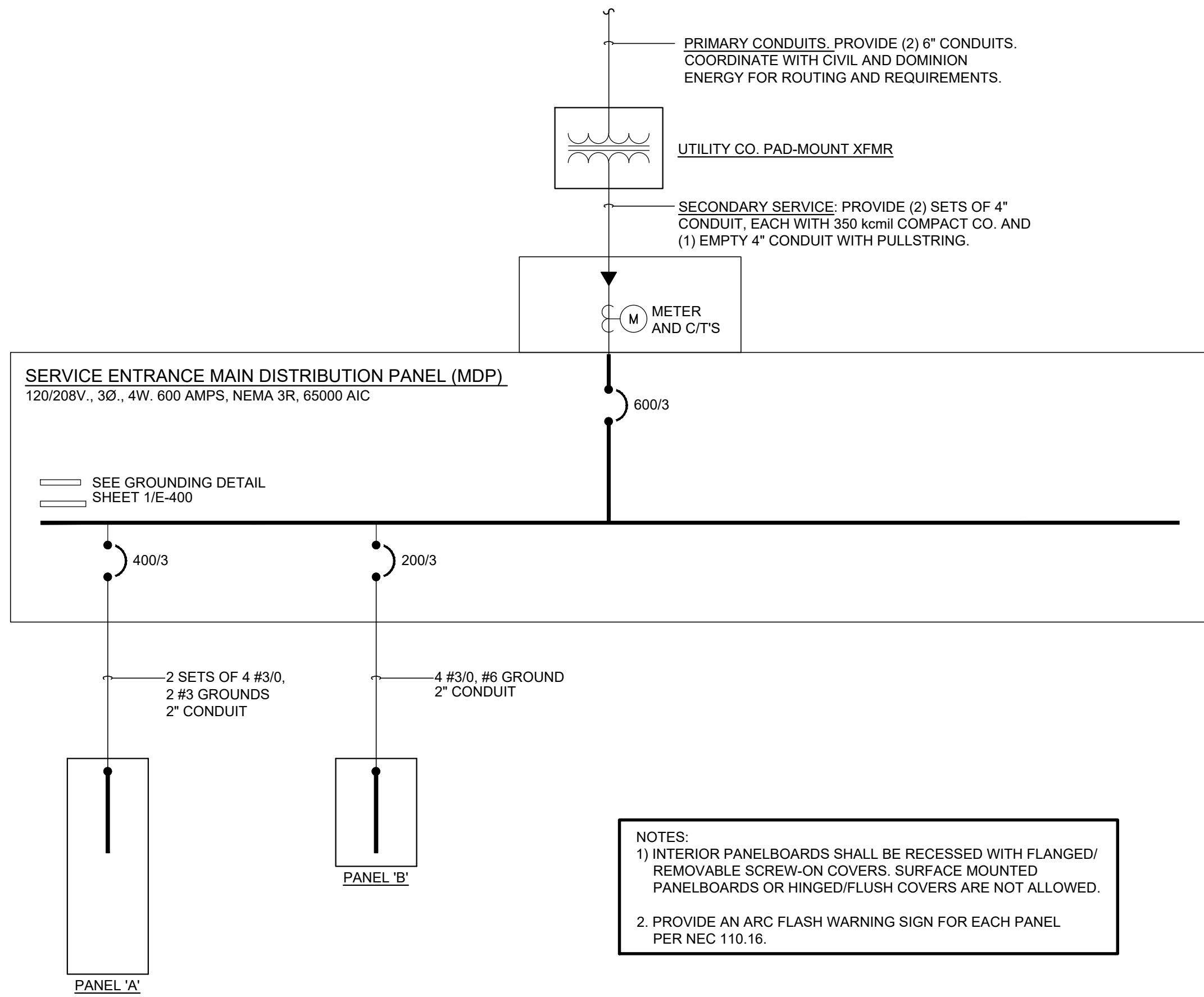
1. KITCHEN EQUIPMENT SHOWN AT 100% IN PANEL SCHEDULE. 65% DEMAND FACTOR TAKEN IN LOAD SUMMARY AS ALLOWED BY THE NEC 220.56.
2. TERMINATE GROUND ON ISOLATED GROUND BUS.
3. ROUTE CIRCUIT THROUGH LIGHTING CONTACTOR CONTROLLED BY TIMECLOCK. REFER TO DETAILS, 11/E-400.
4. WIRE SIZE INCREASE DUE TO VOLTAGE DROP. SIZE EQUIPMENT GROUND CONDUCTOR PROPORTIONALLY PER THE NEC.
5. PROVIDE GROUND FAULT EQUIPMENT PROTECTION (GFEPT) TYPE CIRCUIT BREAKER FOR HEAT TAPE.
6. GFCI BREAKER.
7. INSTALL LOCKING DEVICE (LOCK-OFF FOR MAINTENANCE).
8. IF A 50A, 2P GFCI BREAKER IS NOT AVAILABLE FROM THE PANEL MANUFACTURER THEN THE CONTRACTOR SHALL PROVIDE A REMOTE GFCI DEVICE ALONG WITH A STANDARD 50A, 2P CIRCUIT BREAKER.

<u>Service Entrance Load Summary</u>					
Lighting	19.60 x	125%		=	24.50 KVA
Receptacles	19.50	10 +	11.30 x	50% =	15.65 KVA
Motor	33.70 x	100% +	5.4 x	125% =	40.45 KVA
Heating	19.30			=	19.30 KVA
AC	46.6			=	46.60 KVA
Kitchen	60.50 x	65%		=	39.33 KVA
					185.83 KVA
Main Service Entrance Ampere Requirements					515.80 Amps
Main Service Fuse size					OK

1. UNLESS NOTED, ALL DEVICES AND TERMINATIONS 100 AMPS AND LESS TO BE RATED FOR 60°C WIRE, OVER 100 AMPS, 75°C WIRE.
2. CONTRACTOR TO SUBMIT SERVICE ENTRANCE GEAR SHOP DRAWINGS TO SERVING UTILITY COMPANY FOR APPROVAL.
3. ALL WIRE #8 AND SMALLER TO BE THWN/THHN CU.; #6 AND LARGER TO BE XHHW CU.
4. THE DESIGN PROFESSIONAL HAS PERFORMED ALL REQUIRED LOAD CALCULATIONS AND VERIFIES THAT ALL UPSTREAM PANELS AND EQUIPMENT ARE NOT OVERLOADED.
5. E.C. SHALL PROVIDE GROUNDING PER NEC ARTICLE 250, RE. 1E-400 FOR ADDITIONAL INFORMATION.

SINGLE LINE DIAGRAM GENERAL NOTES		3	SERIES RATING NOTES		4
NOT TO SCALE		E-601		NOT TO SCALE	E-601

ELECTRICAL SERVICE ENTRANCE COORDINATION			
NEW SERVICE REQUIRED: 600A, 120/208V, 3 PHASE, 4 WIRE		UTILITY COMPANY: XXXXXXXXXXXXXXXXXXXX	
SERVICE TO BUILDING ROUTED: REFER TO SHEET E-105		NAME OF CONTACT: XXXXXXXXXXXXXXXXXXXX	
AVAILABLE FAULT CURRENT: TBD		PHONE: (XXX)-XXX-XXXX	
METERING LOCATION: EXTERIOR BUILDING		EMAIL: XXXXXXXXXXXX@XXXXXX.com	
ITEMS	CONTRACTOR		UTILITY COMPANY
	FURNISHED BY	INSTALLED BY	INSTALLED BY
PRIMARY CONDUCTORS			X
PRIMARY TERMINATIONS			X
PRIMARY CONDUIT(S)	X	X	
PRIMARY TRENCH/BACKFILL	X	X	
TRANSFORMER –(CONTRACTOR TO PROVIDE PAD PER/UTILITY REQ'S.)			X
SECONDARY CONDUCTORS (FROM XFMR TO UTILITY METER)	X	X	
SECONDARY TERMINATIONS @ TRANSFORMER (GC PROVIDE LUGS)			X
SECONDARY TERMINATIONS @ SERVICE ENTRANCE	X	X	
SECONDARY CONDUIT	X	X	
SECONDARY TRENCH/BACKFILL	X	X	
METERING CT'S – TO BE DETERMINED BY UTILITY			X
METER HOUSING – PROVIDED BY UTILITY TO CONTRACTOR AT NO CHARGE	X	X	
<u>CONTRACTOR NOTE:</u>			
1. CONTRACTOR TO FIELD VERIFY AND COORDINATE THEIR RESPONSIBILITIES FOR ELECTRICAL SERVICE ENTRANCE WITH ELECTRICAL SERVICE PROVIDER; AND PROVIDE BID WITH ALL ASSOCIATED COSTS WITH NO ADDITIONAL COST TO OWNER.			



SINGLE LINE DIAGRAM		2
NOT TO SCALE		E-601



PANDA EXPRESS, INC.
1683 Walnut Grove Ave.
Rosemead, California
91770
Telephone: 626.799.9898
Facsimile: 626.372.8288

All ideas, designs, arrangement and plans indicated or represented by this drawing are the property of Panda Express Inc. and were created for use on this specific project. None of these ideas, designs, arrangements or plans may be used by or disclosed to any person, firm, or corporation without the written permission of Panda Express Inc.

REVISIONS:

	PERMIT RESPONSE 01	02/07/2023

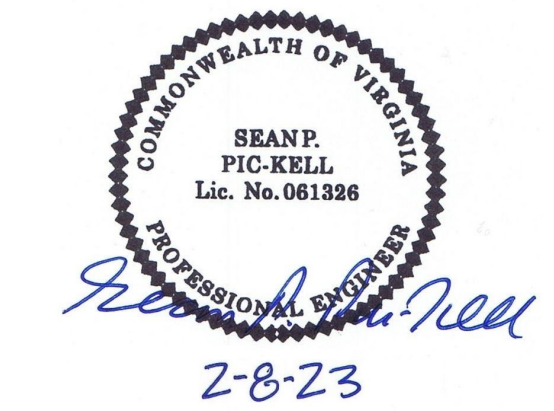
ISSUE DATE:

	PERMIT / BID SET	10-12-21

DRAWN BY: G. COLLINS

PANDA PROJECT #: D8675

ARCH PROJECT #: JCDT21-0221-00



NORR
ARCHITECTS ENGINEERS PLANNERS

PANDA EXPRESS

TRUE WARM & WELCOME
1121 COURTHOUSE RD.
STAFFORD, VA 22554

E-601

PANELS, SINGLE LINE, LOAD CALC'S

TRUE WARM & WELCOME 2500 R2