

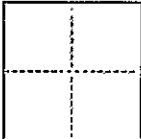
CORNER RECORD

CR 325

COUNTY OF ALAMEDA T. R. MERIDIAN CALIFORNIA

CORNER TYPE: GOV'T. CORNER ☐ MEANDER ☐ RANCHO ☐ CONTROL ☐ OTHER ☒

CORNER IDENTIFICATION — DATE OF VISIT January 31 1992



CORNER — LEFT AS FOUND ☐ FOUND AND TAGGED ☐ REESTABLISHED OBLITERATED CORNER ☐ REBUILT ☐

PHYSICAL DESCRIPTION OF CORNER FOUND; EVIDENCE AND METHOD USED TO IDENTIFY OR REESTABLISH

△ Found original City of Oakland concrete monuments in Bristol Drive as shown on "Gwin Unit of the Highlands of Oakland" (5M39).

PHYSICAL DESCRIPTION OF MONUMENTS REBUILT OR PERPETUATED

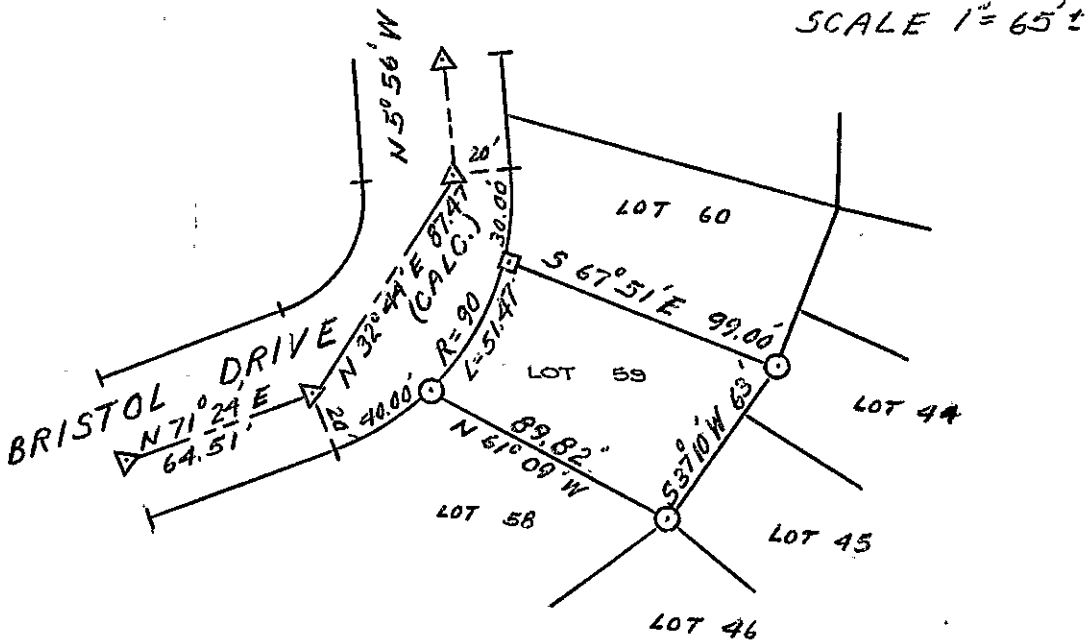
⊙ Set 5/8" rebar with plastic cap, tagged L.S. 5252 as indicated below at corners of Lot 59.

⊠ Set hub with tag, L.S. 5252, as indicated below at one corner of Lot 59.
Per "Gwin Unit of the Highlands of Oakland" (5M39).

CALIFORNIA COORDINATE SYSTEM ORDER: FIRST ☐ SECOND ☐ THIRD ☐
STATIONS USED: NGS (USC & GS) ☐ STATE ☐ COUNTY ☐ OTHER ☐ STATION STATION
ZONE ELEVATION NORTHINGS (Y) EASTINGS (X)

(Fold)

SKETCH: (Include reference tie or witness points, remarks and topo of area)



SURVEYOR'S CERTIFICATE

THIS CORNER RECORD WAS PREPARED BY ME OR UNDER MY DIRECTION IN CONFORMANCE WITH THE LAND SURVEYORS ACT ON February 6 1992

SIGNED: Jeffrey D. Black

L.S. or ~~XXX~~ No.: 5252



COUNTY SURVEYOR'S CERTIFICATE

THE CORNER RECORD WAS RECEIVED 5/19/94 1994 AND EXAMINED AND FILED

BY: Russell R. Penland

FILE: 94-14-3-CR-20

DOCUMENT NO. 198720
STATEMENT ON BACK OF SHEET

YES ☐

NO ☒

