

CORNER RECORD

Agency Index

BK 152 PG 29

Document Number CR 16499

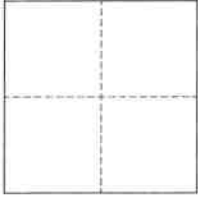
County of Alameda, California

City of Oakland

Brief Legal Description Monument near 13187 Campus Drive

CORNER TYPE

COORDINATES (Optional)



- ☐ Government Corner ☒ Control
☐ Meander ☐ Property
☐ Rancho ☐ Other

Date of Survey January 17, 2023

N. _____ E. _____

Elevation _____

Units ☐ Metric ☐ U.S. Survey Foot

Horizontal Datum _____

Zone _____ Epoch Date _____

Vertical Datum _____

☐ Complies with Public Resources Code §§8801-8819☐ Complies with Public Resources Code §§8890-8902

PLS Act Ref.:

☐ 8765(d)☒ 8771☐ 8773☐ Other:Corner/
Monument:☒ Left as found☐ Established☐ Rebuilt☒ Pre-Construction☐ Found and tagged☐ Reestablished☒ Referenced☐ Post-Construction

Narrative of corner identified and monument as found, set, reset, replaced, or removed:

☒ See sheet #2 for description(s):

This Corner Record is being filed to reference the position of an existing monument, prior to a sanitary sewer rehabilitation project. This document is for preservation purposes only, and no attempt was made to determine the relationship to property, centerline, or right-of-way lines.

SURVEYOR'S STATEMENT

This Corner Record was prepared by me or under my direction in conformance with

the Professional Land Surveyors' Act on March 10, 2023

Signed

P.L.S. or R.C.E. No.

8040



COUNTY SURVEYOR'S STATEMENT

This Corner Record was received _____

and examined and filed _____

MAR 31 2023

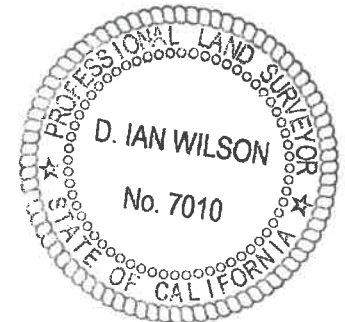
Signed

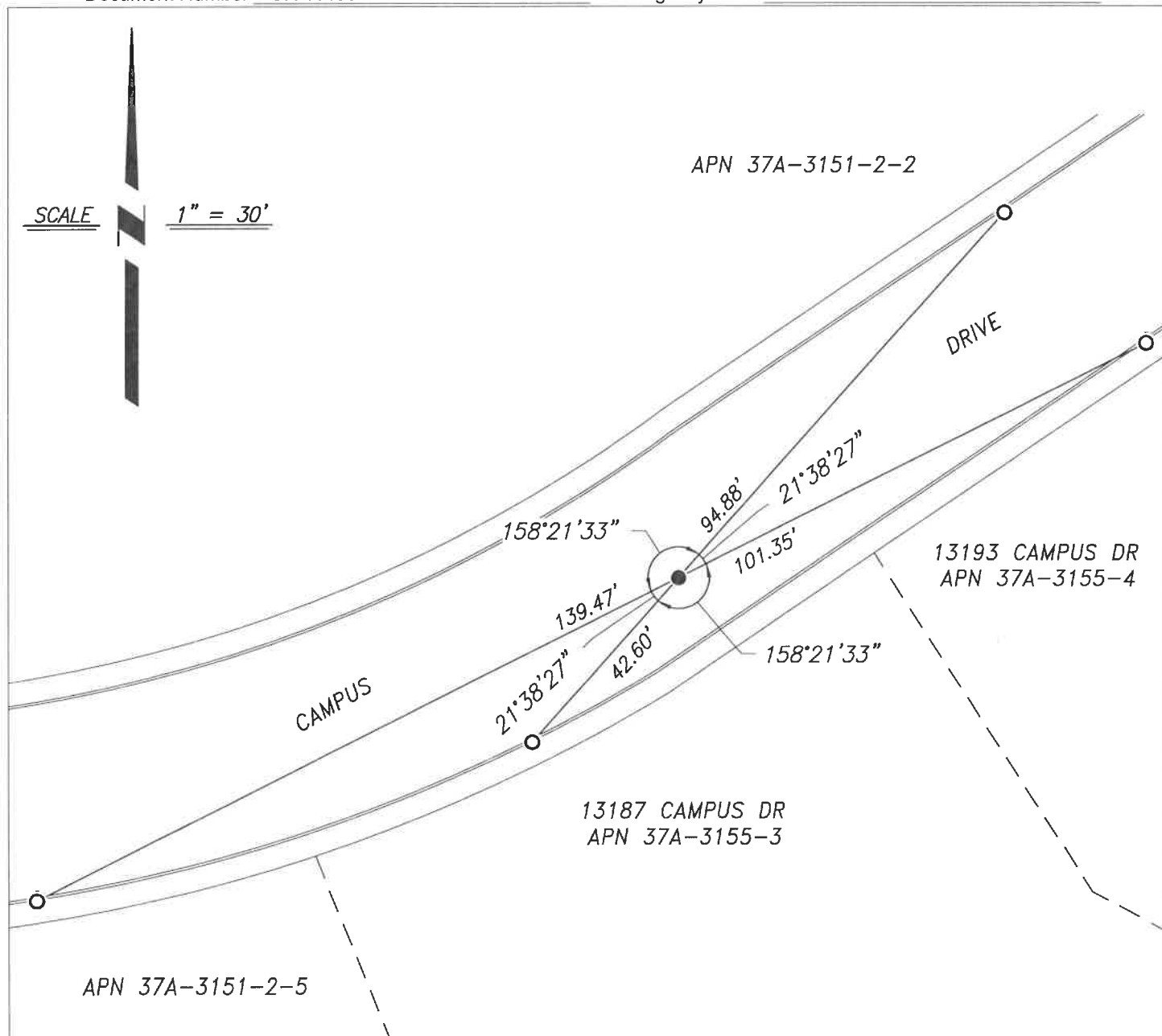
P.L.S. or R.C.E. No.

7010

Title ALAMEDA COUNTY SURVEYOR

County Surveyor's Comment





REFERENCE

- (A) TRACT 3393 IN THE CITY OF OAKLAND, FILED ON OCTOBER 29, 1981, IN BOOK 130 OF TRACT MAPS, AT PAGES 33-52, ALAMEDA COUNTY RECORDS.

LEGEND

- FOUND MONUMENT, 3" BRASS DISK, WITH PUNCH, STAMPED "RE 9788", 0.75' BELOW SURFACE IN MONUMENT WELL
- CUT CROSS IN CONCRETE AS REFERENCE POINT

NOTES

1. ALL REFERENCES ARE ALAMEDA COUNTY RECORDS