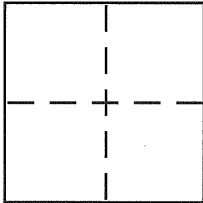


CORNER RECORDDocument Number CR 5325City of BERKELEYCounty of ALAMEDA, CaliforniaBrief Legal Description CITY OF BERKELEY MONUMENT B1749**CORNER TYPE**

Government Corner ☐ Control ☒
 Meander ☐ Property ☐
 Rancho ☐ Other ☐
 Date of Survey 11-23-12

COORDINATES (Optional)

N. _____
 E. _____
 Zone _____ NAD27 ☐ NAD83 ☐
 NAD83 Epoch _____
 Elev. _____
 Vert. Datum: NGVD29 ☐ NAVD88 ☐
 Meas. Units: Metric ☐ Imperial ☐

Corner – Left as found ☒ Found and tagged ☐ Established ☐ Reestablished ☐ Rebuilt ☐

Identification and type of corner found: Evidence used to identify or procedure used to establish or reestablish the corner:

IN COMPLIANCE WITH SECTION 8771 OF THE PROFESSIONAL LAND

SURVEYORS' ACT, THIS CORNER RECORD IS BEING FILED TO ESTABLISH

THE POSITION OF AN EXISTING MONUMENT PRIOR TO SEWER RECONSTRUCTION.

A description of the physical condition of the monument as found and as set or reset:

CITY OF BERKELEY STANDARD MONUMENT WITH 1/2" BRASS PIN

SURVEYOR'S STATEMENT

This Corner Record was prepared by me or under my direction in conformance with

the Land Surveyor's Act on NOVEMBER 23 2012

Signed D. M. Logan P.L.S. or R.C.E. No. 5003

COUNTY SURVEYOR'S STATEMENT

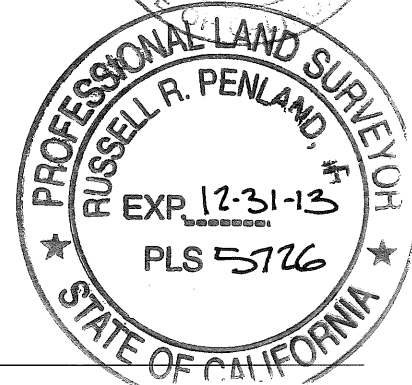
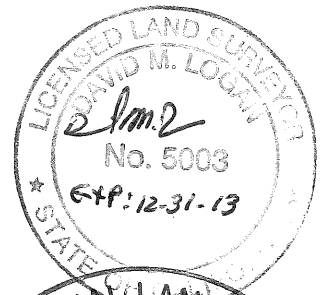
This Corner Record was received _____

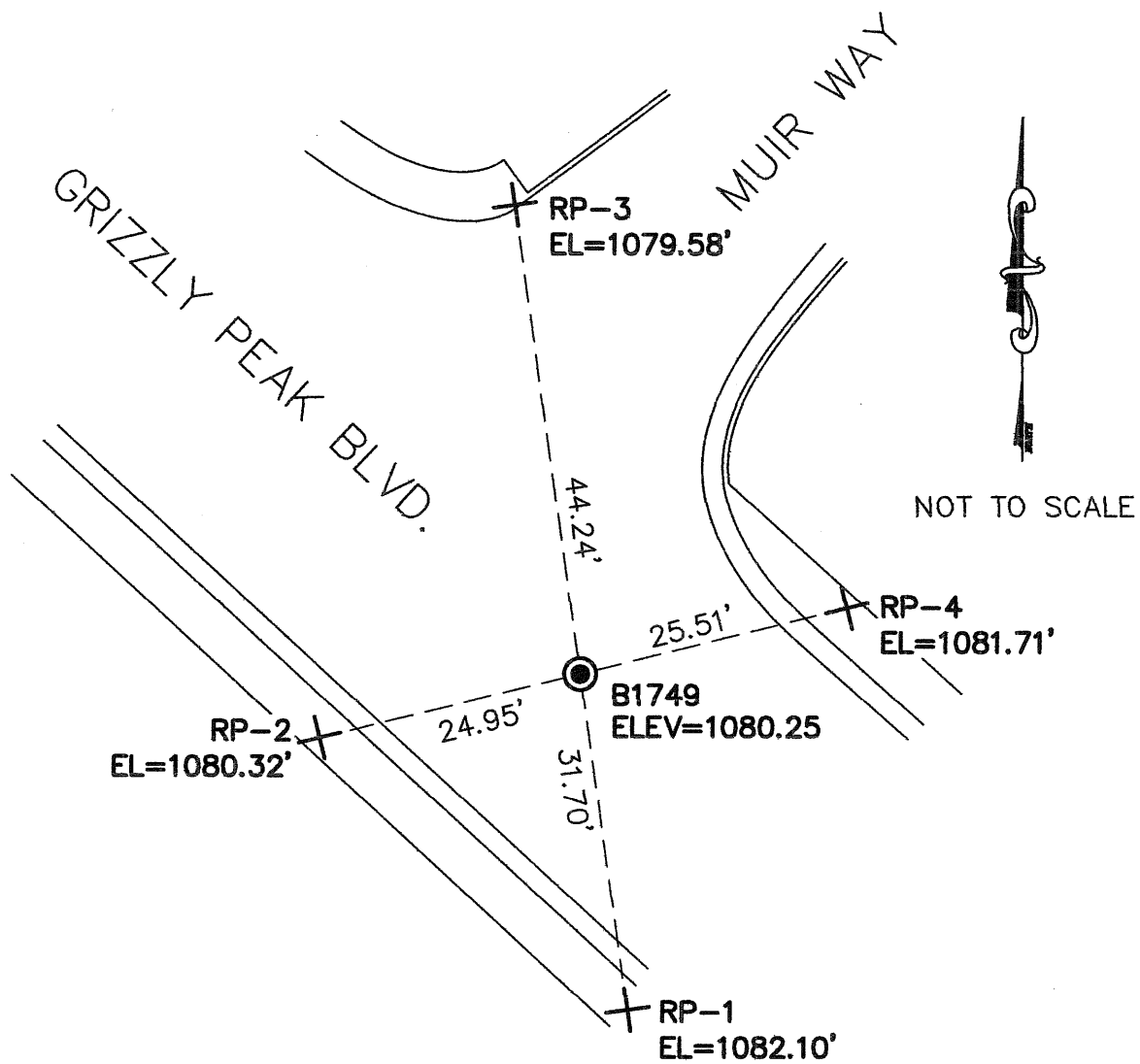
and examined and filed 3-20-13

Signed Russell R. Penland P.L.S. or R.C.E. No. 5126

Title COUNTY SURVEYOR

County Surveyor's Comment _____





NOTE:
THE EXISTING MONUMENT AS SHOWN IS
REFERENCED BY STRAIGHT LINES BETWEEN
RP-1 TO RP-3 AND RP-2 TO RP-4.

LEGEND

- STANDARD CITY MONUMENT WITH 1/2" BRASS PIN WITH A PUNCH MARK
- + REFERENCE CROSS SET IN SIDEWALK