

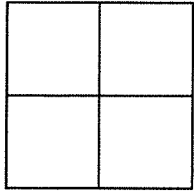
# CORNER RECORD

Agency Index

BK 140 PG 10

Document Number

CR 14846

City of FREMONTCounty of ALAMEDA, CaliforniaBrief Legal Description MONUMENT LOCATED WITHIN MONTE SERENO TER AT COSTA MESA TERTRACT NO. 6725 AVALON - UNIT No. 4 LOT 30 APN: 519-1715-19

## CORNER TYPE

## COORDINATES (Optional)

Government Corner ☐ Control ☒  
Meander ☐ Property ☐  
Rancho ☐ Other ☐

N. \_\_\_\_\_ E. \_\_\_\_\_

Elevation \_\_\_\_\_

Units Metric ☐ U.S. Survey Foot ☐

Horizontal Datum \_\_\_\_\_

Zone \_\_\_\_\_ Epoch Date \_\_\_\_\_

Vertical Datum \_\_\_\_\_

☐ Complies with Public Resources Code §§8801-8819☐ Complies with Public Resources Code §§8890-8902Date of Survey 10/01/2020PLS Act Ref: ☐ 8765 (d) ☒ 8771 ☐ 8773 ☐ Other:

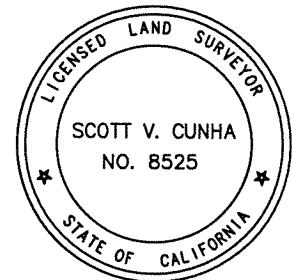
Corner/  
Monument: ☒ Left as found ☐ Established ☐ Rebuilt ☒ Pre-Construction  
☐ Found and tagged ☐ Reestablished ☒ Referenced ☐ Post-Construction

Narrative of corner identified and monument as found, set, reset, replaced, or removed:

☐ See sheet #2 for description (s):FOUND 2.5" BRASS DISC WITH PUNCH STAMPED "CITY OF FREMONT LS 6608" AT GRADE.FOUND AND SET POINTS AS SHOWN ON PAGE 2.THIS POINT WAS REFERENCED PRIOR TO A CONSTRUCTION PROJECT IN THE VICINITY.THE TIES SHOWN HEREON ARE FOR THE PURPOSE OF PERPETUATING FOUND MONUMENTATION.NO CLAIM IS MADE AS TO THE RELATIONSHIP OF THE POINTS OR LINES SHOWN HEREON TO TRUE BOUNDARY LOCATION.

## SURVEYOR'S STATEMENT

This Corner Record was prepared by me or under my direction in conformance with

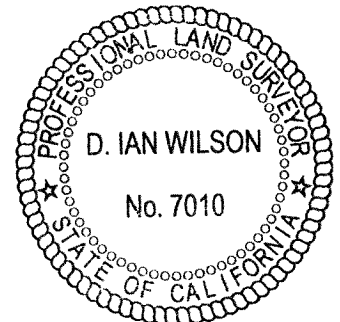
the Professional Land Surveyors' Act on OCTOBER 6, 2020.Signed SCOTT V. CUNHA P.L.S. or R.C.E. No. 8525

## COUNTY SURVEYOR'S STATEMENT

This Corner Record was received \_\_\_\_\_,

and examined and filed AUG 04 2021.Signed D. Ian Wilson P.L.S. or R.C.E. No. 7010Title ALAMEDA COUNTY SURVEYOR

County Surveyor's Comment



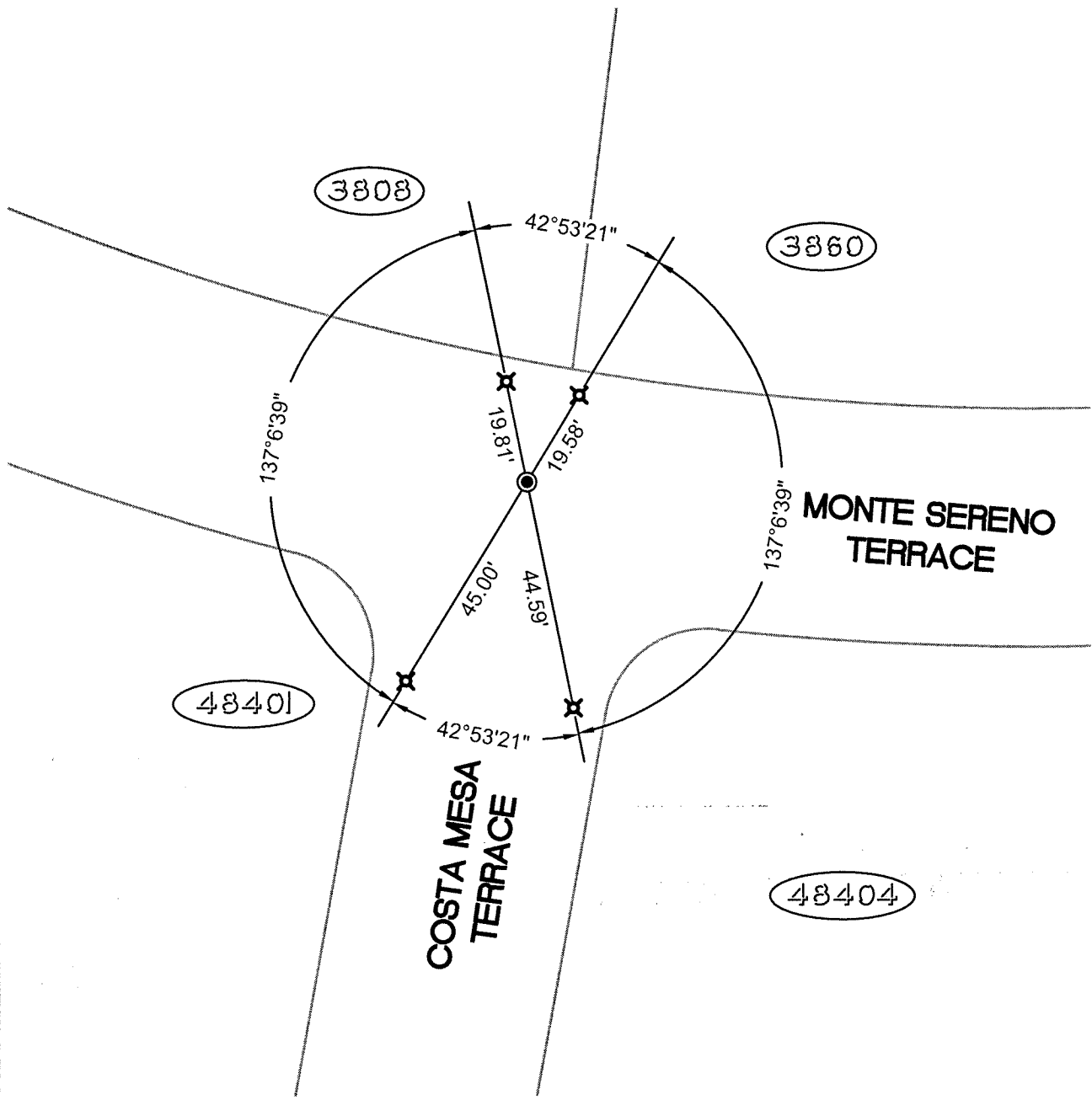
SCALE: 1"=30'

## LEGEND

● FOUND 2.5" BRASS DISC WITH PUNCH STAMPED "CITY OF FREMONT LS 6608"

✕ SET NAIL AND TAG IN CURB STAMPED "TOWILL RP"

(19592) REFERENCE STREET ADDRESS



16659 Fremont-Avalon Heights-CR-17