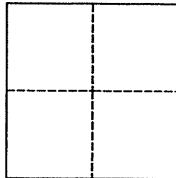


CORNER RECORD

Agency Index BK 102 PG 63
Document Number CR 10518

City of CASTRO VALLEY County of ALAMEDA, California
Brief Legal Description XW45K2 (CARLEEN DRIVE AND CARLEEN COURT)



CORNER TYPE

Government Corner ☒ Control
Meander ☐ Property
Rancho ☐ Other

Date of Survey 07/24/2017

COORDINATES (Optional)

N. _____ E. _____
Elevation _____
Units Metric ☐ U.S. Survey Foot ☒
Horizontal Datum _____
Zone _____ Epoch Date _____
Vertical Datum _____
☐ Complies with Public Resources Code §§8801-8819
☐ Complies with Public Resources Code §§8890-8902

PLS Act Ref.: ☒ 8765(d) ☐ 8771 ☐ 8773 ☐ Other:
Corner/Monument: ☐ Left as found ☐ Established ☐ Rebuilt ☒ Pre-Construction
☐ Found and tagged ☐ Reestablished ☐ Referenced ☐ Post-Construction

Narrative of corner identified and monument as found, set, reset, replaced, or removed:
☒ See sheet #2 for description(s):

*FOUND COUNTY BRASS CAP MON IN MON WELL, DOWN 12",
SET FOUR CUT "X" REFERENCES AS SHOWN ON SHEET 2.*

SURVEYOR'S STATEMENT

This Corner Record was prepared by me or under my direction in conformance with
the Professional Land Surveyors' Act on SEPTEMBER 8, 2017.

Signed *James N. Landrum* P.L.S. or R.C.E. No. LS 5837



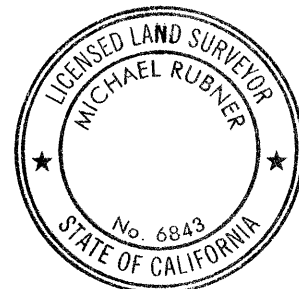
COUNTY SURVEYOR'S STATEMENT

This Corner Record was received 4 AUGUST 2017
and examined and filed 17 OCTOBER 2017.

Signed *Michael Rubner* P.L.S. or R.C.E. No. 6843

Title COUNTY SURVEYOR

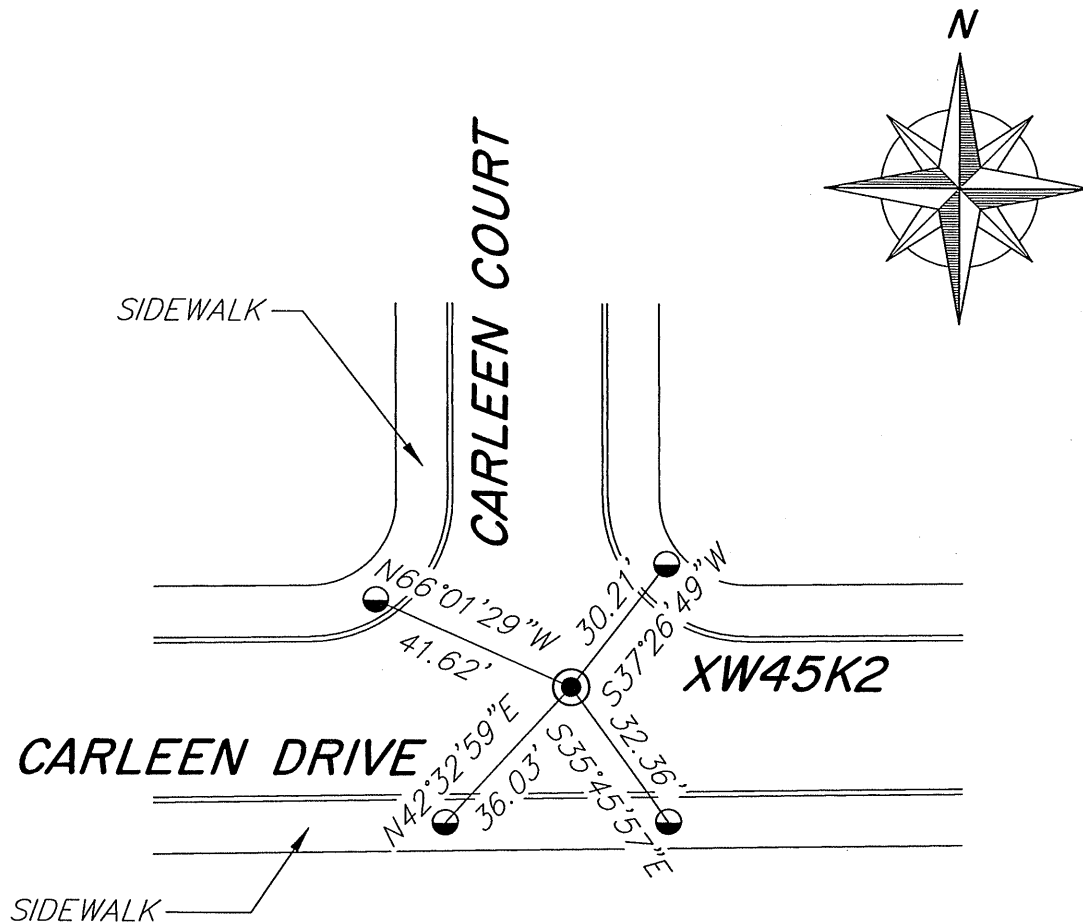
County Surveyor's Comment



SPEC 2322

XW45K2

NO SCALE

**LEGEND**

● FOUND ALAMEDA COUNTY MONUMENT
AS NOTED ON SHEET 1

● SET CUT "X" UNLESS
OTHERWISE SHOWN

AA##A# ALAMEDA COUNTY MONUMENT ID

NOTE THAT BEARINGS ARE
APPROXIMATE AND ARE TO
BE USED FOR ANGLE
CALCULATIONS ONLY.