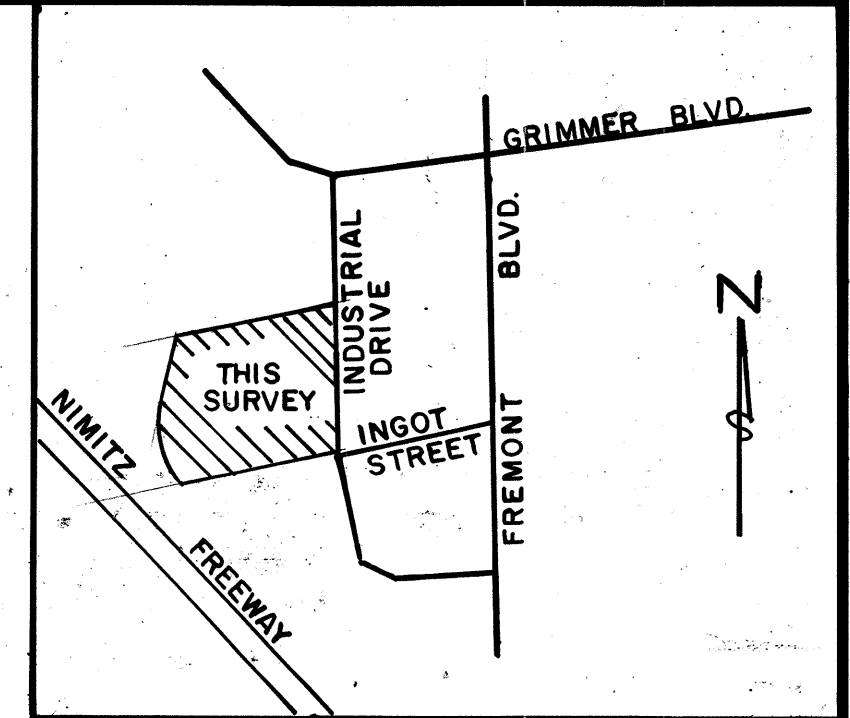


BASIS OF BEARINGS

THE MONUMENT LINE ON INDUSTRIAL DRIVE BETWEEN
INGOT STREET AND GRIMMER BOULEVARD AS SHOWN ON
PARCEL MAP NO. 4044 WAS TAKEN TO BE N 03° 55' 30" W.

LEGEND

- EXTERIOR BOUNDARY LINE
- EASEMENT LINE
- SURVEY MONUMENT LINE
- FOUND CITY STD. CONC. MONUMENT
- PARCEL LINE
- PUBLIC UTILITY EASEMENT
- RECORD DATA
- CURVE RADIAL LINE



VICINITY MAP
SCALE 1" = 1000'

GREER 83-106350

PARCEL 2
8.455 ACRES

PARCEL 1
7.271 ACRES

MALLEN 86-123441

NOTE

BUILDING SETBACK
BUILDING LOCATION AND SETBACKS TO BE PER CITY
OF FREMONT ZONING ORDINANCE.

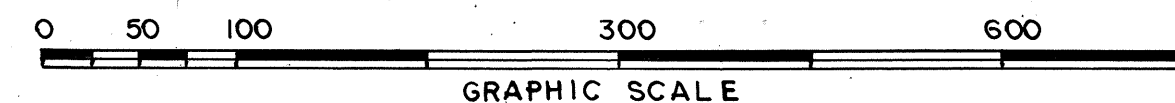
PARCEL MAP NO. 5349
CITY OF FREMONT
ALAMEDA COUNTY, CALIFORNIA
FOR : J.I. CASE CO.

SCALE 1" 100' MARCH, 1988

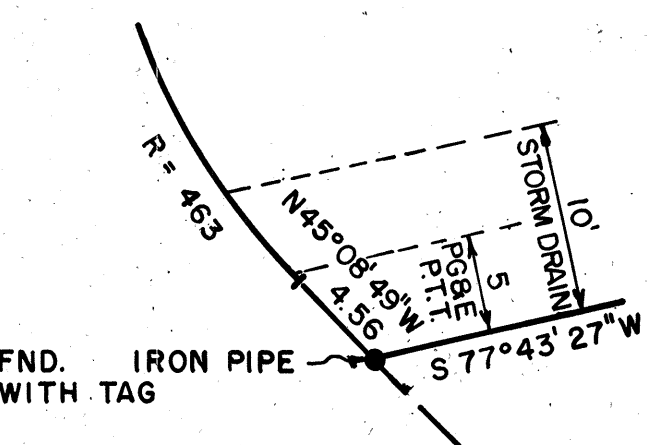
GEORGE BUSCHER, LICENSED LAND SURVEYOR,
L.S. 3456
22874 SUTRO STREET
HAYWARD, CALIFORNIA 94541

87560

SHEET 2 OF 2



89054822



DETAIL "A"
NO SCALE

A.C.F.C. & W.C.D.

pm 5349

Map 86 187 7927