



REVISIONS:

[illegible]

DRAWN BY: BL

PANDA PROJECT #: S8-22-D8044
PANDA STORE #: D8044
ARCH PROJECT #: Q511070001

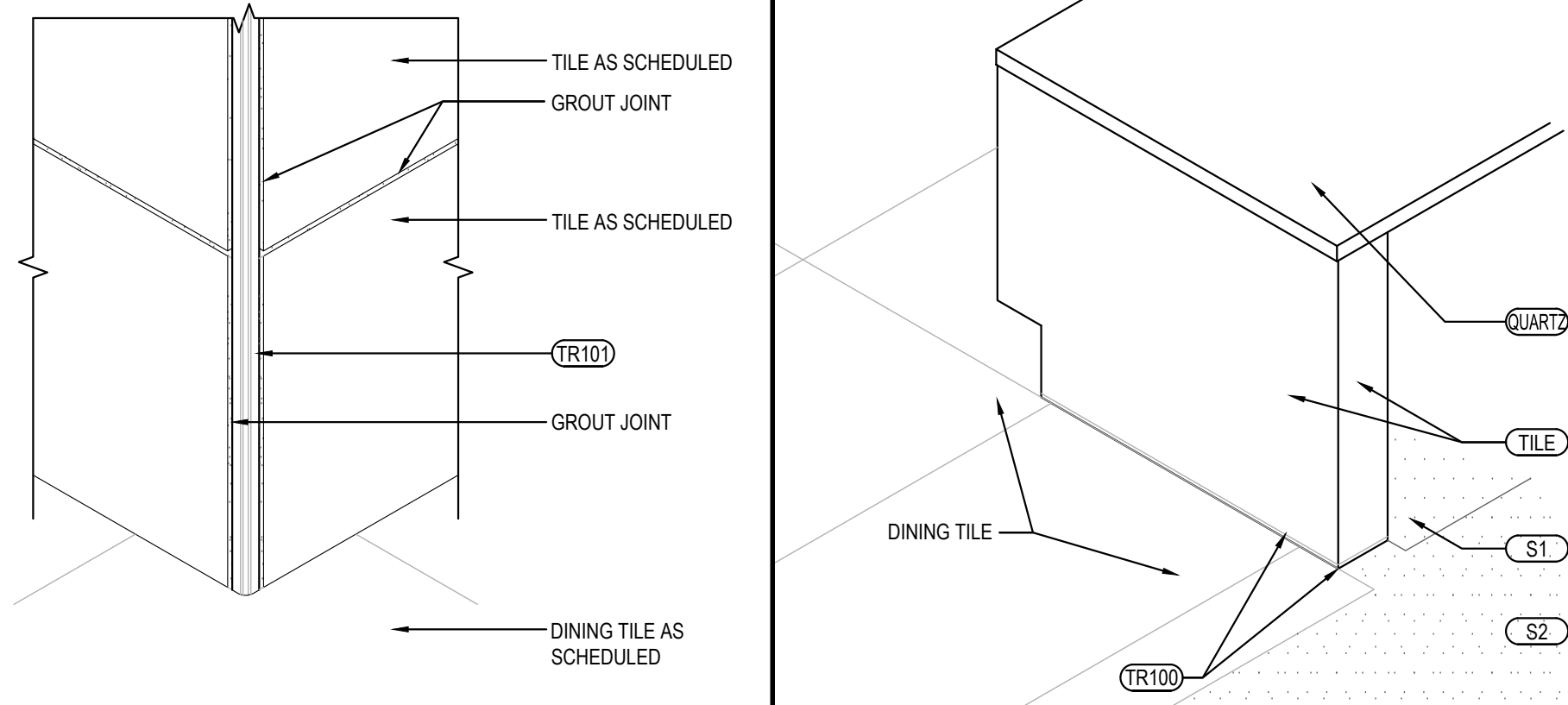


PANDA EXPRESS
TRUE WARM & WELCOME
N STATE ROAD 9
GREENFIELD, IN 46140

A-104

FINISH PLAN AND SCHEDULE

TRUE WARM & WELCOME 2300 R5



OUTSIDE CORNER DETAIL	3	SERVICE COUNTER ISOMETRIC	2
Scale= 3" = 1'-0"	A-104	Scale= 3/4" = 1'-0"	A-104

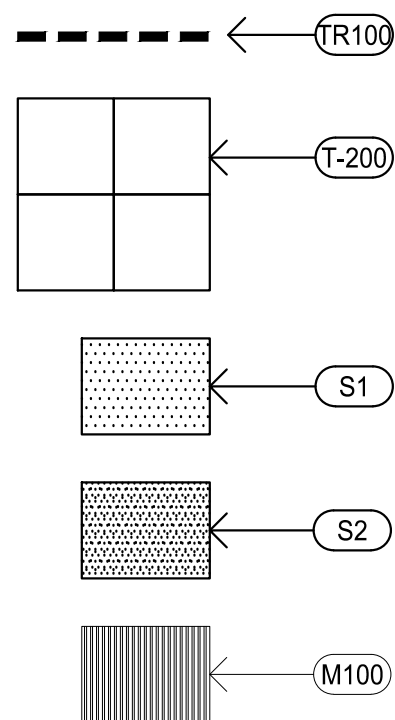
TILE SCHEDULE		INSTALLED AND FURNISHED BY: G.C. UNLESS NOTED OTHERWISE						05-11-19
NO.	MANUFACTURER	DESCRIPTION	COLOR	FINISH	JOINT	GROUT	REMARK	
(T-108)	CMC AGGREGATE DOUG SALATINO 518-713-5371	12" X 24" X 3/8"	-	-	1/8"	G-111	RESTROOM WALL	
(T-109)	DALTILE	6" X 36" X 3/8" 24" X 36" X 3/8"	FIRESTAR PARK TIMBERLAND PP97	-	1/8"	G-113	RR VESTIBULE & DINING ROOM WALLS CONTACT: NATIONAL ACCOUNT SUPPORT DESK 877.556.5728 (national.accounts@daltile.com)	
(T-200)	CMC DOUG SALATINO 518-713-5371	9" X 24"	BRAVADA GREIGE	MATTE	1/8"	G-96	DINING & RESTROOM FLOOR	
(T-300)	EMSER - ECHO	3" HEXAGON	CALACATTA	MATTE	1/8"	G-114	BEVERAGE COUNTER BACKSPLASH AND SERVICE COUNTER	
(S1)	SILIKAL	QUARTZ BLEND #4	-	PLAIN	-	-	KITCHEN, SERVICE FLOOR CONTACT: MARK FELDMAN 770-830-1404 (mfieldman@silikalamerica.com)	
(S2)	SILIKAL	QUARTZ BLEND #4	-	ABRASIVE	-	-	JOHN COTHRAN 888-830-1404 (jcothran@silikalamerica.com)	
(M100)	MATSINC 800.628.7462	NUWAY - 7/16" ALUM FOOT GRILLE	CHARCOAL	-	-	-	(2) 2 X 6 PIECES FOR A 4 X 6' OVERALL MAT SIZE IN VESTIBULE @ VESTIBULE STORES	
GROUT	MANUFACTURER	DESCRIPTION	MFG.	COLOR	FINISH	REMARK		
(G-96)	MAPEI 800.42.MAPEI WWW.MAPEI.COM	LATEX MODIFIED GROUT	11	SAHARA BEIGE	POLY BLEND 1/8" NON-SANDED	DINING & RESTROOM FLOOR APPLY GROUT SEALER		
(G-111)	MAPEI 800.42.MAPEI WWW.MAPEI.COM	LATEX MODIFIED GROUT	19	PEARL GREY	POLY BLEND 1/8" NON-SANDED	RESTROOM, DINING APPLY GROUT SEALER		
(G-113)	MAPEI 800.42.MAPEI WWW.MAPEI.COM	LATEX MODIFIED GROUT	07	CHOCOLATE	POLY BLEND 1/8" NON-SANDED	APPLY GROUT SEALER		
(G-114)	MAPEI 800.42.MAPEI WWW.MAPEI.COM	LATEX MODIFIED GROUT	19	PEARL GREY	POLY BLEND 1/8" NON-SANDED	BEVERAGE COUNTER BACKSPLASH APPLY GROUT SEALER		

* REFER A-200 EXTERIOR FINISH SCHEDULE FOR EXTERIOR DECORATIVE TILE	
* SCHLUTER SYSTEM ALUMINUM TRIM:	
COVE TILE TRIM: INSTALLED AT RESTROOM SERVICE COUNTER, AND DRINK STATION SCHLUTER SYSTEMS DILEX-AHK 1'S 125 ATGB (BRUSHED NICKEL ANODIZED ALUMINUM)	FLOOR TILE TRANSITION TRIM: INSTALLED IN VESTIBULE SCHLUTER SYSTEMS SCHIENE-RAE/125 (SATIN ANODIZED ALUMINUM)
(TR100) -OUTSIDE CORNER CONNECTOR PIECE: DILEX-AHK-E90/AHK 1'S 125 ATGB (BRUSHED NICKEL ANODIZED ALUMINUM) -INSIDE CORNER CONNECTOR PIECE: DILEX-AHK-I90/AHK 1'S 125 ATGB (BRUSHED NICKEL ANODIZED ALUMINUM) -END CAP PIECE: DILEX-AHK-E/AHK 1'S 125 ATGB (BRUSHED NICKEL ANODIZED ALUMINUM)	(TR102)
EDGE TILE TRIM: SCHLUTER SYSTEMS RONDEC-RO125 ATGB (BRUSHED NICKEL ANODIZED ALUMINUM)	
(TR101) -OUTSIDE CORNER CONNECTOR PIECE: RONDEC-EV/RO125 ATGB (BRUSHED NICKEL ANODIZED ALUMINUM) -INSIDE CORNER CONNECTOR PIECE: RONDEC-I2L/RO125 ATGB (BRUSHED NICKEL ANODIZED ALUMINUM)	
SCHLUTER SYSTEMS RONDEC-RO80 ATGB (BRUSHED NICKEL ANODIZED ALUMINUM)	
(R101A) -OUTSIDE CORNER CONNECTOR PIECE: RONDEC-EV/RO180 ATGB (BRUSHED NICKEL ANODIZED ALUMINUM) -INSIDE CORNER CONNECTOR PIECE: RONDEC-I2L/RO80 ATGB (BRUSHED NICKEL ANODIZED ALUMINUM)	
SCHLUTER SYSTEMS JOLLY-A 80 ATGB (BRUSHED NICKEL ANODIZED ALUMINUM)	
(TR103) -OUTSIDE EDGE PROTECTION PIECE	

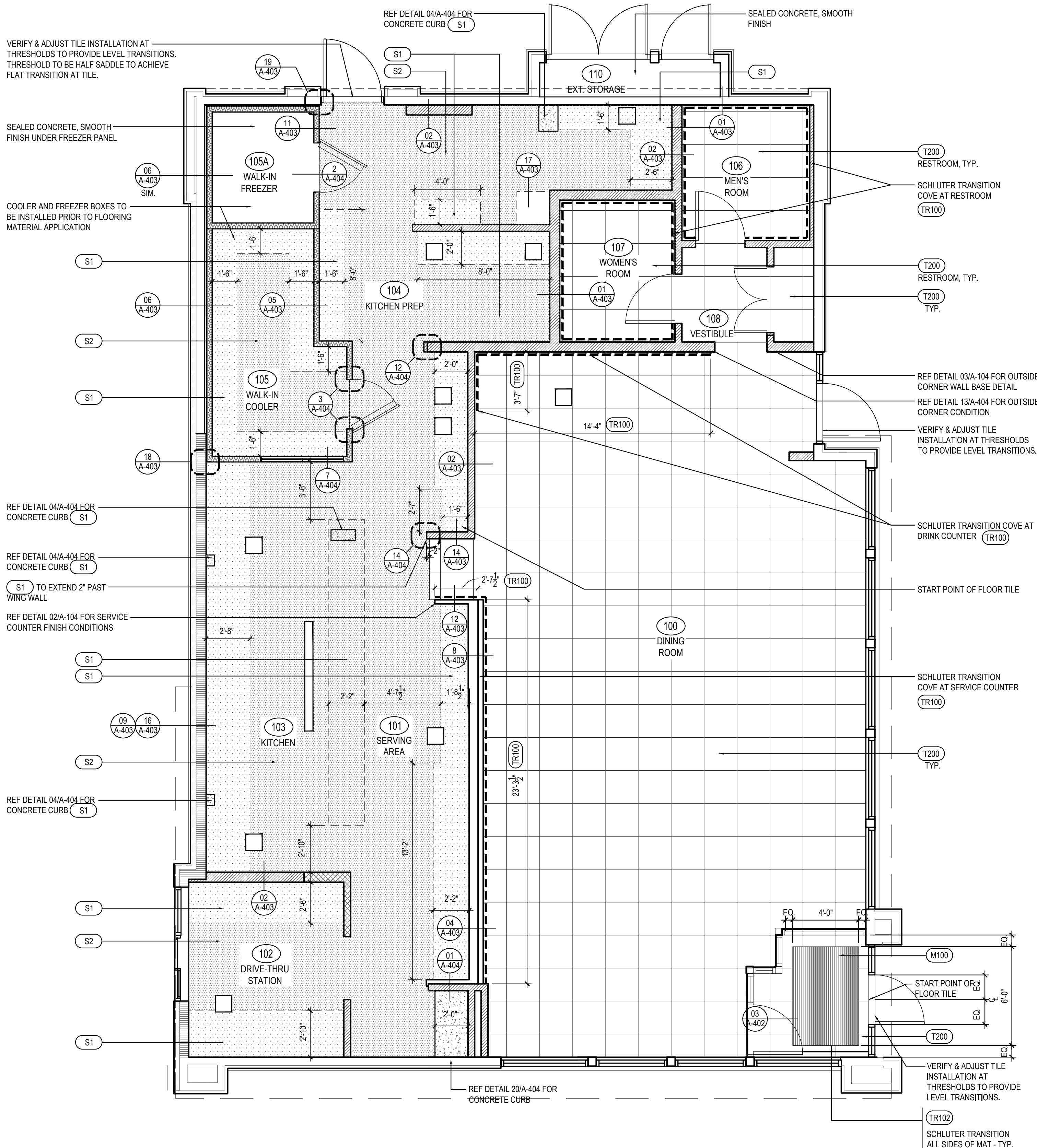
* EPOXY GROUT BY MAPEI, KERAPOXY IEG, 100% SOLIDS INDUSTRIAL GRADE:
AREAS: UNDER HOOD AND 36" IN FRONT OF COOKING LINE, 3 COMPARTMENT SINK AND MOP SINK AREA

SEE MANUFACTURER'S SPECIFICATION, DETAILS AND GUIDE FOR PREPARATION,
MIXING, GROUTING AND CLEANING INSTRUCTION

NOTE: SEE INTERIOR SHEETS FOR WALL/ BASE TILE LOCATIONS AND
SPECIFICATIONS



FINISH SCHEDULE	A
Scale= NTS	A-104



FINISH PLAN	1
Scale= 1/4" = 1'-0"	A-104