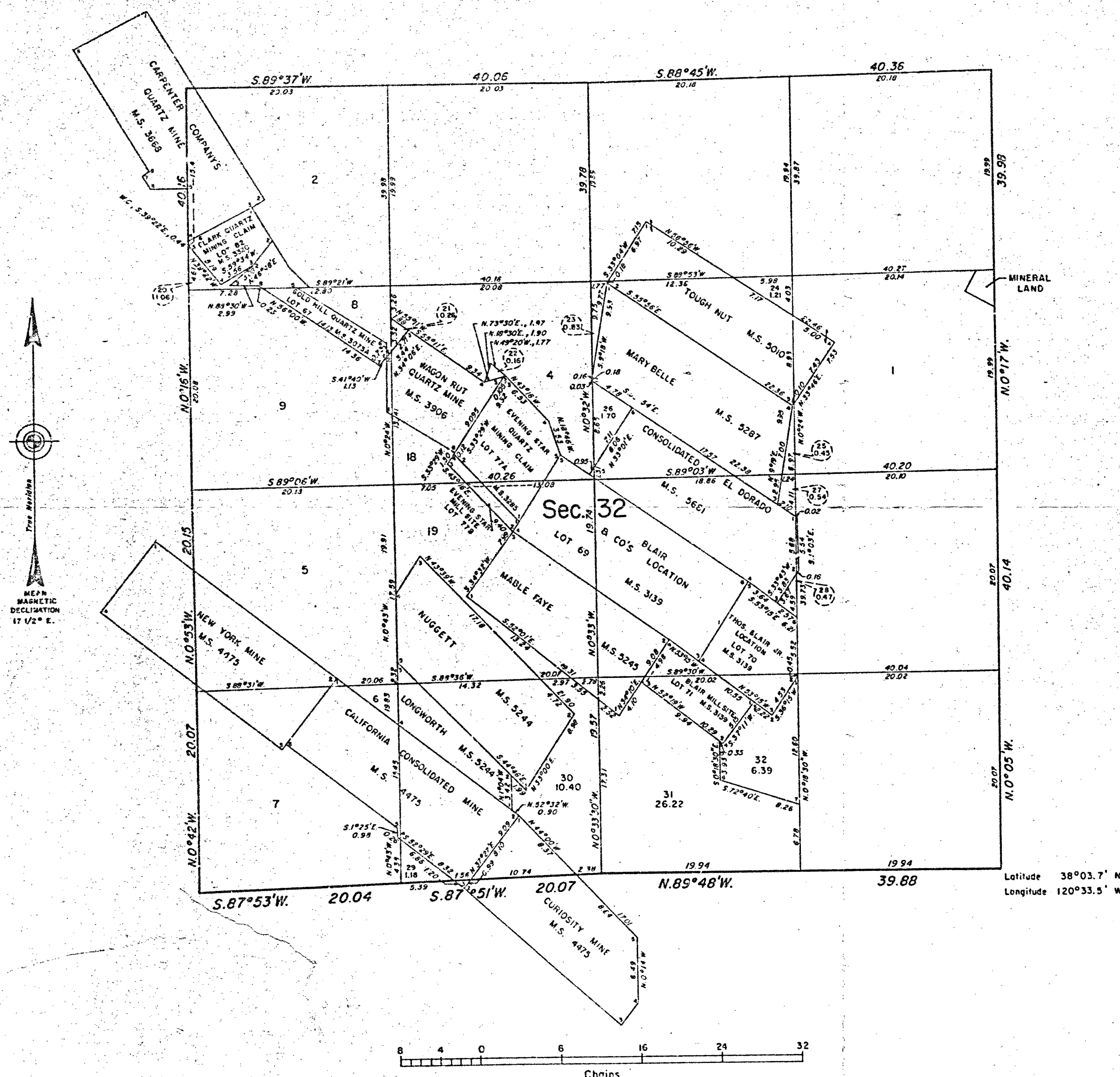


ORIGINAL

TOWNSHIP 3 NORTH, RANGE 13 EAST, OF THE MOUNT DIABLO MERIDIAN, CALIFORNIA.
DEPENDENT RESURVEY AND SURVEY OF SEC. 32



A history of surveys is contained in the field notes.

This plat represents the dependent resurvey of a portion of the south boundary, a portion of the subdivisional lines, a portion of the subdivision of section 32, and certain mineral survey boundaries designed to restore the corners in their true original locations according to the best available evidence, and the survey of the subdivision and the meter-and-bounds survey of lot 32 in section 32, T. 3 N., R. 13 E., Mount Diablo Meridian, California.

Except as indicated hereon, the lottings and areas are as shown on the township plats approved August 30, 1871, and November 21, 1916.

Surveys executed by Woodrow L. Jepson, Cadastral Surveyor, March 6, 1978, to May 6, 1980, under Special Instructions dated December 8, 1977, for Group No. 705, California.

UNITED STATES DEPARTMENT OF THE INTERIOR
BUREAU OF LAND MANAGEMENT
Denver, Colorado February 11, 1981

This plat is strictly conformable to the approved field notes, and the survey, having been correctly executed in accordance with the requirements of law and the regulations of this Bureau, is hereby accepted.

For the Director

Louis C. Giddens

Acting Chief, Cadastral Survey
Examination and Approval Staff

Latitude 38°03.7' N.
Longitude 120°33.5' W.