

TRACT 2228

EDEN TOWNSHIP

ALAMEDA COUNTY, CALIFORNIA

IN UNINCORPORATED TERRITORY IN THE COUNTY OF ALAMEDA

JANUARY 1961

SCALE : 1" = 40'

MURRAY & MCCORMICK INC.  
CONSULTING CIVIL ENGINEERS  
SAN LEANDRO, CALIFORNIA

BASIS OF BEARINGS:

THE CENTERLINE OF STANTON AVENUE (COUNTY ROAD NO. 7466) IS TAKEN AS N 44° 55' 50" W.

LEGEND:

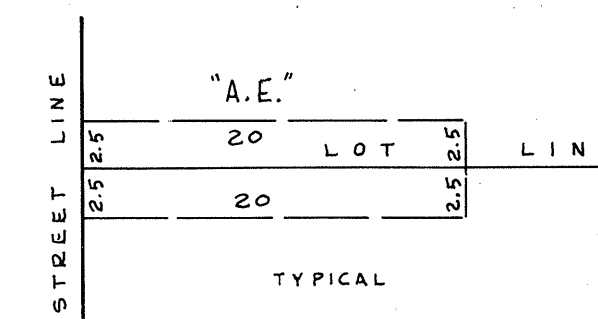
EXISTING MONUMENT	—	—	—	—	—	—	●
CONCRETE MONUMENT WITH CAST IRON FRAME							
AND COVER - TO BE INSTALLED	—	—	—	—	—	—	●
ANCHOR EASEMENT (SEE DETAIL BELOW)	—	—	—	—	—	—	Ⓢ
PUBLIC UTILITY EASEMENT	—	—	—	—	—	—	P.U.E.

BUILDING SET-BACK LINES:

BUILDING SET-BACK LINES TO BE AS REQUIRED BY  
THE ORDINANCE CODE OF THE COUNTY OF ALAMEDA  
TITLE 9, CHAPTER 2.

## ANCHOR EASEMENT DETAIL

(NOT DRAWN TO SCALE)



AS 9190

SHEET NO. 2 OF 3 SHEETS

AS 9190 Filed JAN 23 1961 Book 44 PAGE 48 5

44-5