



REVISIONS:

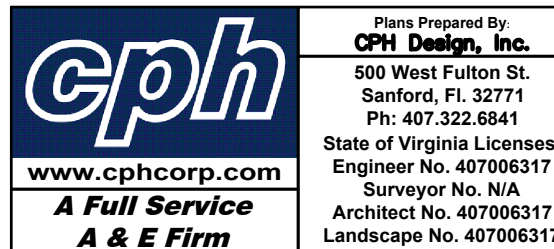
[illegible]

ISSUE DATE:

1	CHECK SET	10-23-
2	PERMIT SET	03-15-
3	BID SET	04-02-

DRAWN BY:

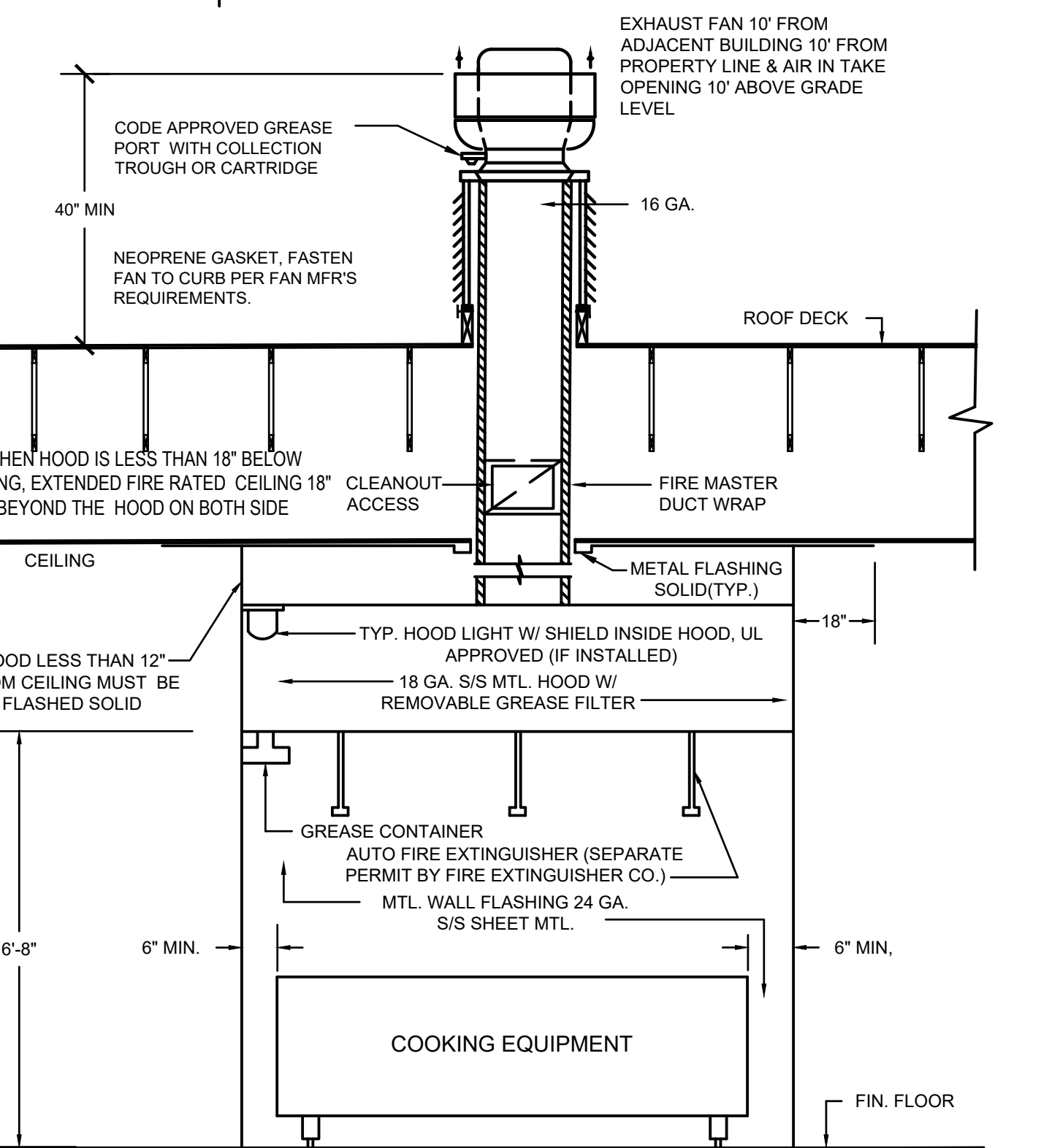
PANDA PROJECT #: S4-21-D7864
ARCH PROJECT #: P7350



PANDA EXPRESS
END CAP - TENANT BUILD OUT
4501 S LABURNUM AVE
RICHMOND VA, 23231

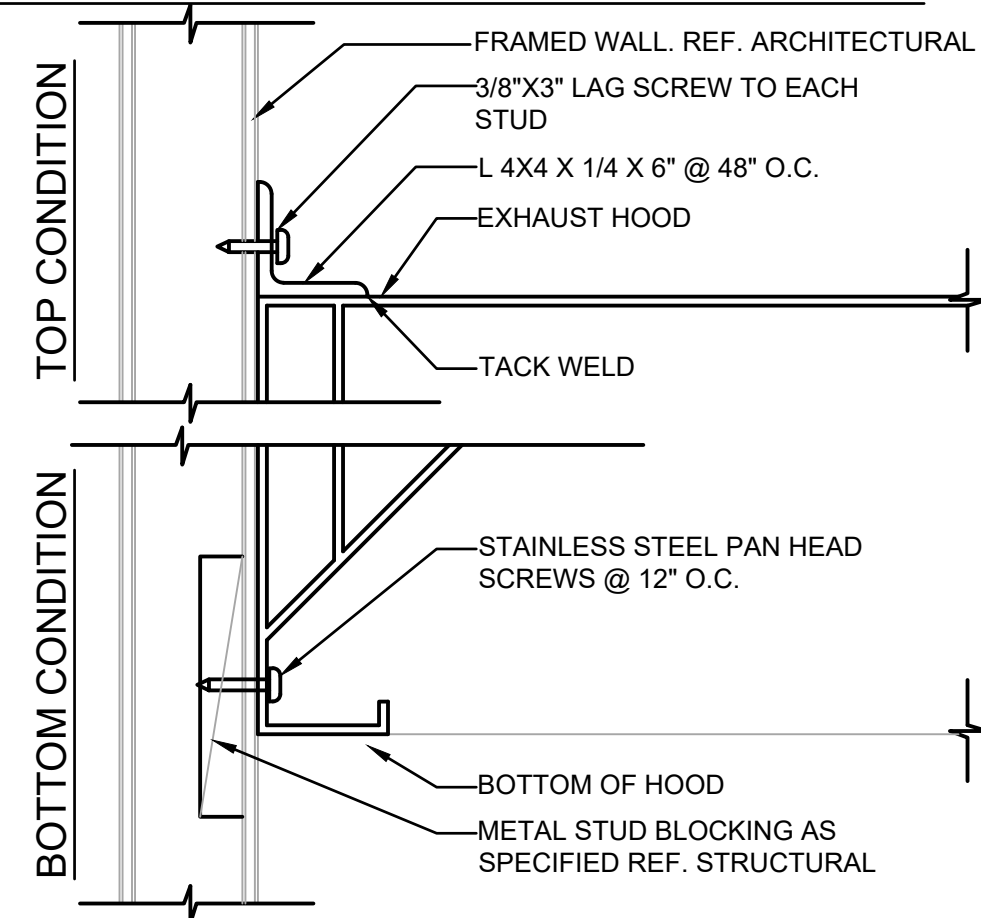
M-500

KITCHEN HOOD DETAILS



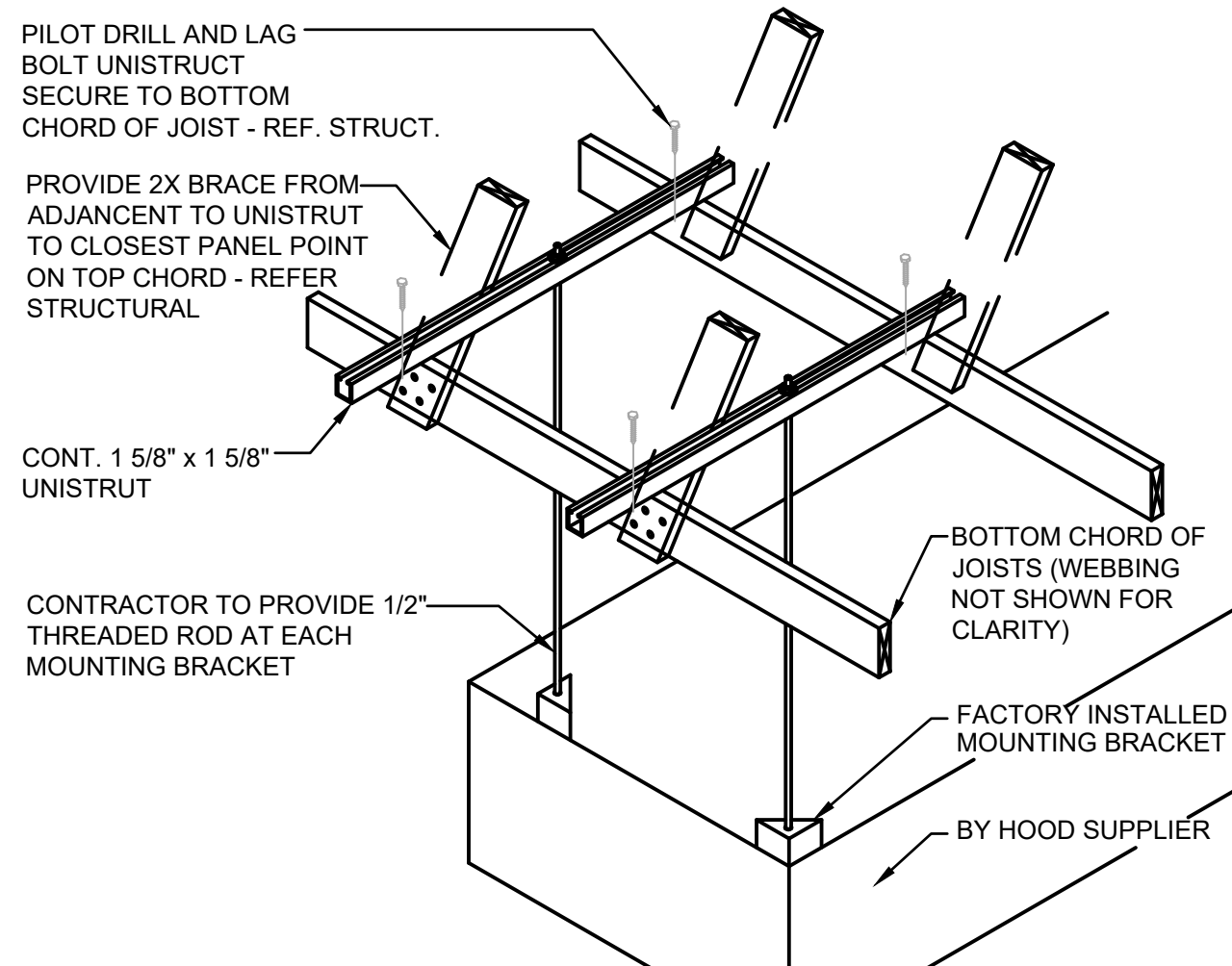
HOOD SECTIONS	18
---------------	----

Scale: NO SCALE | M-50



HOOD CLIP AT WALL	14
-------------------	----

Scale: NO SCALE | M-50



HOOD SUPPORT AT TRUSS | 13

Scale: NO SCALE | M-50

PERFORMANCE TEST FOR LISTED MECHANICAL HOOD IS REQUIRED PER UMC 509.11

GREASE HOOD SYSTEM CALCULATION

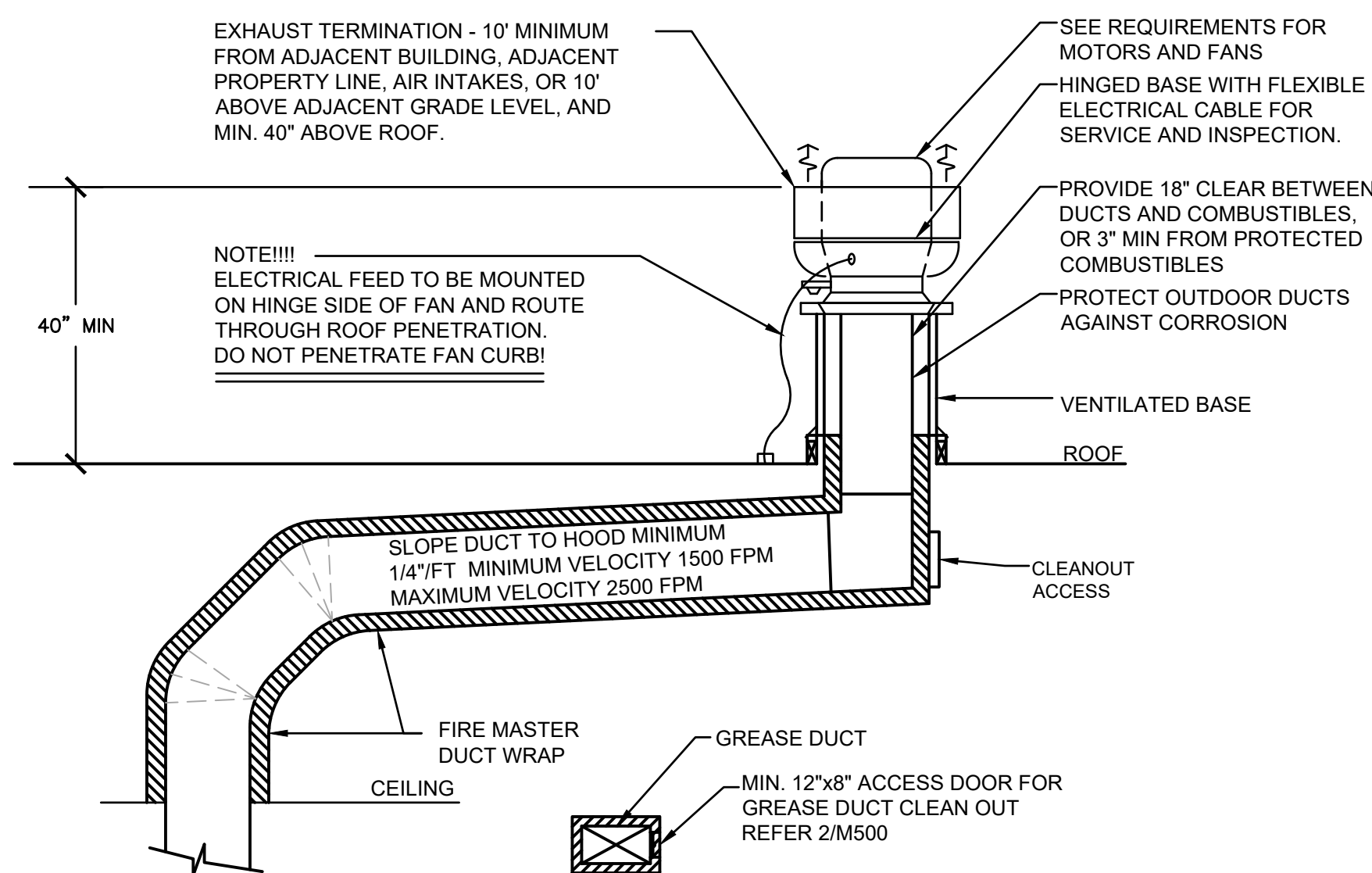
1. TYPE: CANOPY TYPE I, STAINLESS STEEL 18 GAUGE,
2. COOKING EQUIPMENT: (2) CHINESE RANGE, (2) DEEP FRYER, RICE COOKER
3. SIZE: 23'-6" X 4'-0" X 2'-0" MAKEUP AIR PLENUM
4. MIN. RECD CAPACITY CFM: (2) U.L. LISTED HOOD @ 3,100 CFM EACH
5. PRESSURED (2) EXHAUSTED & (1) MAKE-UP AIR UNIT. EF1 & EF2 (3,100CFM EACH); MAU1 (4,956 CFM, 80% OF EXHAUST,
6. EXHAUST DUCT SIZE: 24"x12"
7. EXHAUST VELOCITY @ EXHAUST DUCT 3100/(24"x12")MAU1= 1550 FPM 1500FPM < 1550 FPM < 2500FPM
8. EXHAUST FAN (EF1 & EF2) AND MAKE-UP AIR UNIT (MAU1) SHALL BE ELECTRICALLY INTERLOCKED
9. FOR CODE COMPLIANCE SEE DETAIL
10. FOR FILTER INFORMATION SEE CAPTIVE/AIRE DWG #M-400.
11. INTERLOCK RTU FANS TO OPERATE WITH KEF'S FOR MAKEUP AIR.

INFORMATIONAL GUIDE FOR COMMERCIAL COOKING HOODS

1. STAINLESS STEEL TO BE NO. 18 U.S. GAGE.
2. WHEN GUTTERS ARE PROVIDED THEY SHALL DRAIN TO A COLLECTING PAN WHICH IS READILY ACCESSIBLE FOR CLEANING
3. SEE TABLE 507.11 FOR MINIMUM DISTANCE BETWEEN LOWER EDGE OF GREASE FILTER AND THE COOKING OR HEATING SURFACE.
4. GREASE FILTERS SHALL BE OF STEEL CONSTRUCTION AND READILY ACCESSIBLE FOR CLEANING.
5. ALL JOINTS AND SEAMS SHALL BE GREASE TIGHT.
6. HOODS SHALL BE SECURELY FASTENED IN PLACE BY INCOMBUSTIBLE SUPPORTS.

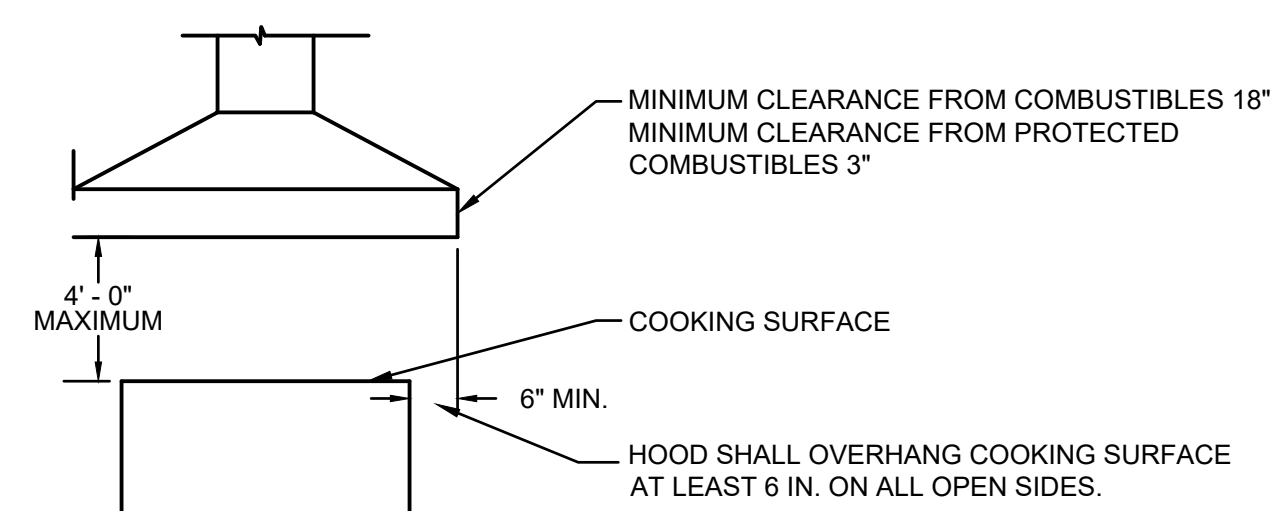
NOTES

1. PROVIDE ADEQUATE CLEANOUT OPENINGS FOR THOROUGH CLEANING OF DUCT SYSTEM.
2. PROVIDE ADEQUATE MAKE-UP AIR FOR PROPER OPERATION.
3. PROVIDE A SEPARATE DUCT SYSTEM FOR EACH HOOD.
4. THICKNESS OF DUCTS SHALL BE:
DUCT AREA U.S. GAGE STEEL
UP TO 4 SQ. FT. 16 GA
OVER 4 SQ. FT. 14 GA
5. WELD OR BRAZE ALL DUCT JOINTS AND SEAMS ON THE EXTERNAL SURFACE.
SUPPORT THE DUCTS AS REQUIRED. DO NOT PENETRATE DUCT WALLS WITH SCREWS, NAILS, ETC
6. SECTIONS OF DUCT SHALL NOT CONTAIN GREASE POCKETS.



CLEAN OUT DOOR DETAIL

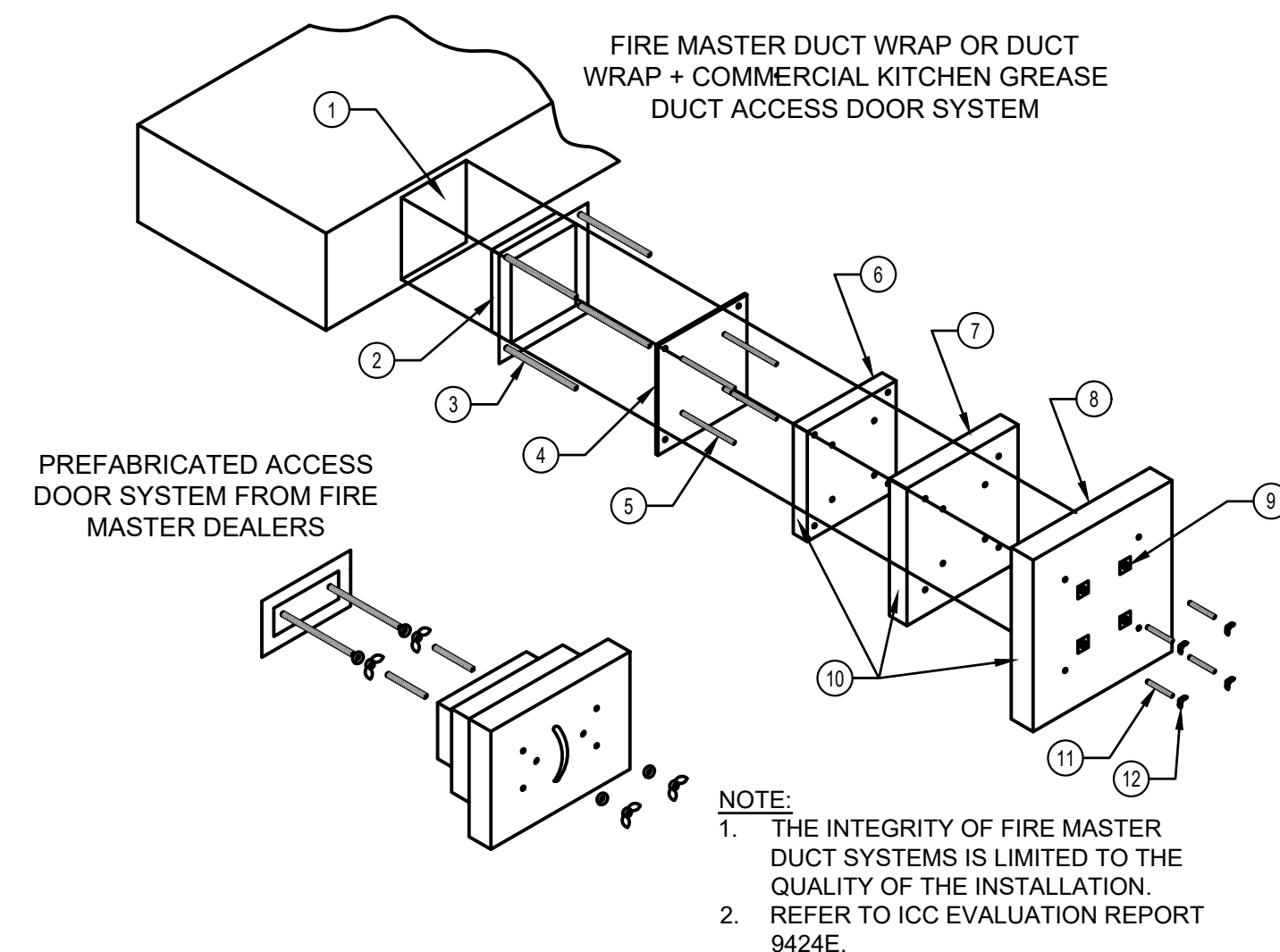
N.T.S.



(FOR REFERENCE ONLY)

HOOD VENTILATION AND SECTION | 5

Scale: NO SCALE | M-50



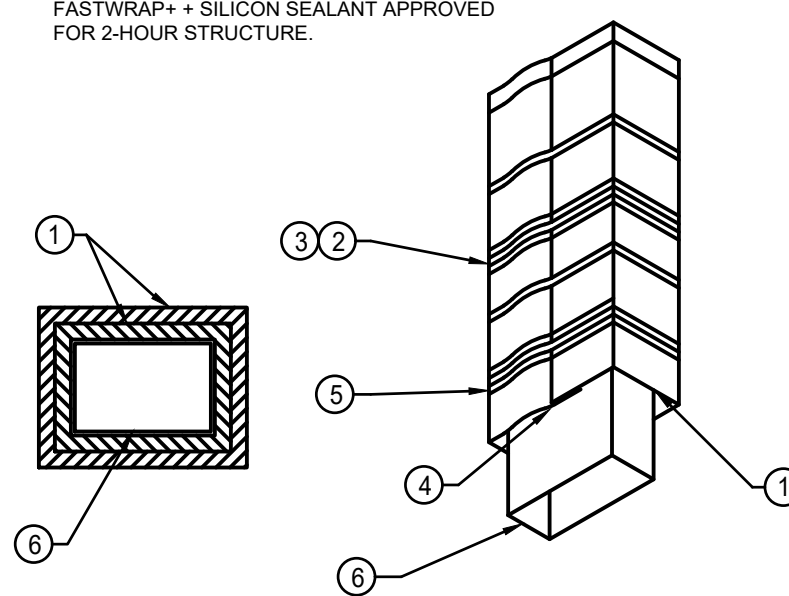
FIRE MASTER DUCT WRAP or DUCT WRAP+	
1	DOOR HOLE
2	ACCESS FRAME WELDED TO DUCT
3	1/4" DIA. ALL THREAD RODS
4	ACCESS COVER - 16 GAUGE
5	INSULATION PINS - WELDED
6	ONE LAYER FIRE MASTER DUCT WRAP or DUCT WRAP +
7	ONE LAYER FIRE MASTER DUCT WRAP or DUCTWRAP + 1" OVERLAP
8	ONE LAYER FIRE MASTER DUCT WRAP or DUCTWRAP + 1" OVERLAP
9	SPEED CLIPS
10	ALUMINUM TAPE AT EDGES
11	SPOOL PIECES FOR THREADED RODS
12	1/4" DIA. WING NUTS

GREASE DUCT ACCESS DOOR	2
-------------------------	---

M-500

NOTE:

GREASE EXHAUST DUCT INSULATION TYPE FIRE MASTER
FASTWRAP++ SILICON SEALANT APPROVED
FOR 2-HOUR STRUCTURE.



	LEGEND
1	TWO LAYERS FIRE MASTER FASTWRAP®
2	FILAMENT TAPE
3	BANDING
4	3-INCH PERIMETER OVERLAP
5	3-INCH LONGITUDINAL OVERLAP
6	GREASE DUCT

FOR SI: 1 INCH=25.4 MM

FIGURE 2-HOUR FIRE-RESISTIVE PROTECTION SYSTEM FOR GREASE DUCTS

2 HOUR GREASE DUCT WRAP	1
-------------------------	---

Scale: NO SCALE | M-50