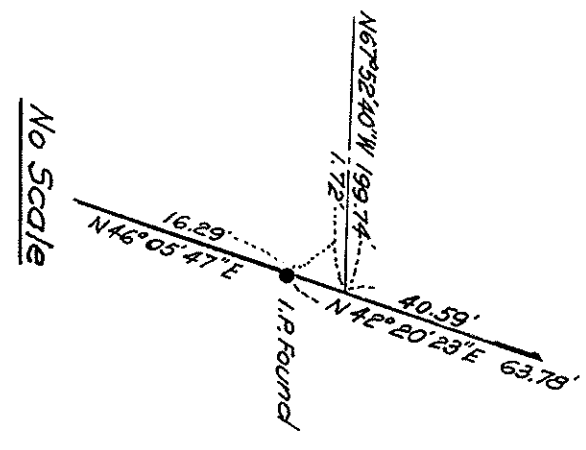
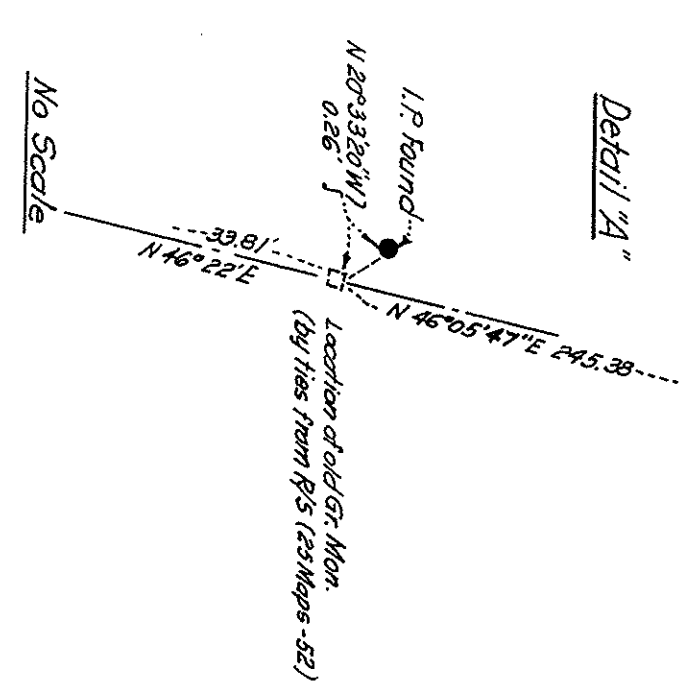
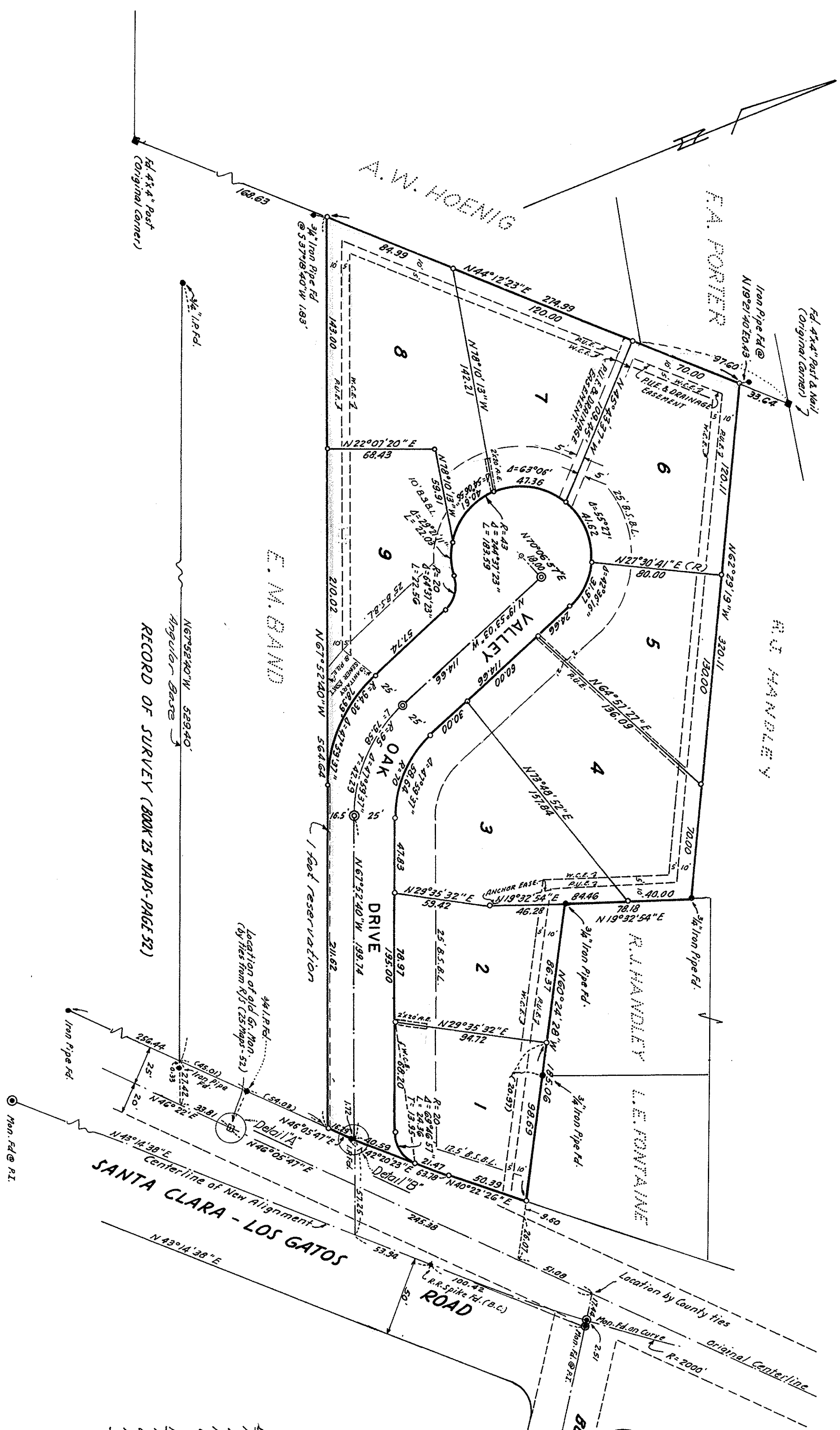


TRACT NO. 2192  
CONSISTING OF TWO(2) SHEETS  
SANTA CLARA COUNTY, CALIFORNIA

BEING A PORTION OF LOT 2 OF THE ALBRIGHT SUBDIVISION  
SCALE: 1" = 50' JULY, 1958  
RUTH AND GOING-CIVIL ENGINEERS  
SAN JOSE, CALIFORNIA



— LEGEND —

—○—	Iron Pipe Set	—RUE—	Public Utility Easement
—●—	Monument Set	—A.E.—	Anchor Easement
—	Points rounded as noted	—W.C.E.—	Wire Clearance Easement
—		—B.T.B.C.—	Building Set Back Line

**— BASIS OF BEARINGS —**  
All bearings shown hereon are based on the northeasterly line of the property shown on Record of Survey map recorded in Book 25 of page 52, Records of Santa Clara County, said line being shown hereon as N67°52'40"W.

**— NOTES —**  
All distances and dimensions shown hereon are in feet and decimals thereof.  
The blue border indicates the boundaries of the land subdivided by this map.