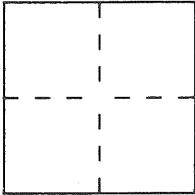


CORNER RECORDDocument Number CR 907City of Berkeley County of Alameda, CaliforniaBrief Legal Description Street Monument on San Lorenzo Avenue**CORNER TYPE**

Government Corner ☐ Control ☐
 Meander ☐ Property ☐
 Rancho ☐ Other ☒
 Date of Survey June 9, 1997

**COORDINATES
(Optional)**

N. _____
 E. _____
 Zone _____ Datum _____
 Elev. _____

Corner — Left as found ☒ Found and tagged ☐ Established ☐ Reestablished ☐ Rebuilt ☐

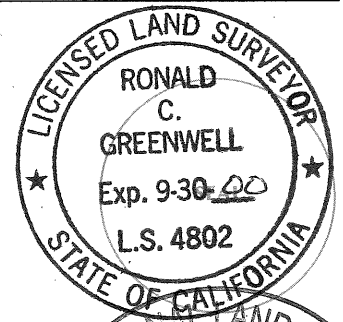
Identification and type of corner found: Evidence used to identify or procedure used to establish or reestablish the corner:
Found City of Berkeley brass pin in concrete set in standard street monument casing. See sketch on page 2 of 2.

A description of the physical condition of the monument as found and as set or reset: _____
Monument in good condition but will be destroyed by new sewer construction.
Set references as shown on sketch for reestablishing monument after construction.

SURVEYOR'S STATEMENT

This Corner Record was prepared by me or under my direction in conformance with the Land Surveyors' Act on July 2 19 97.

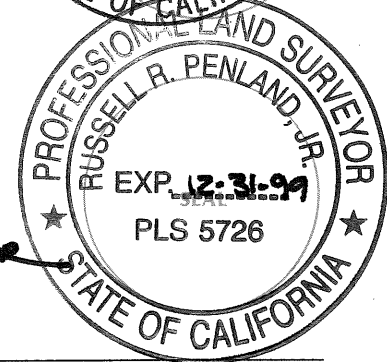
Signed Ronald C. Greenwell L.S. or R.C.E. Number PLS 4802

**COUNTY SURVEYOR'S STATEMENT**

This Corner Record was received 8-22 19 97 and examined

and filed 4-9- 19 98

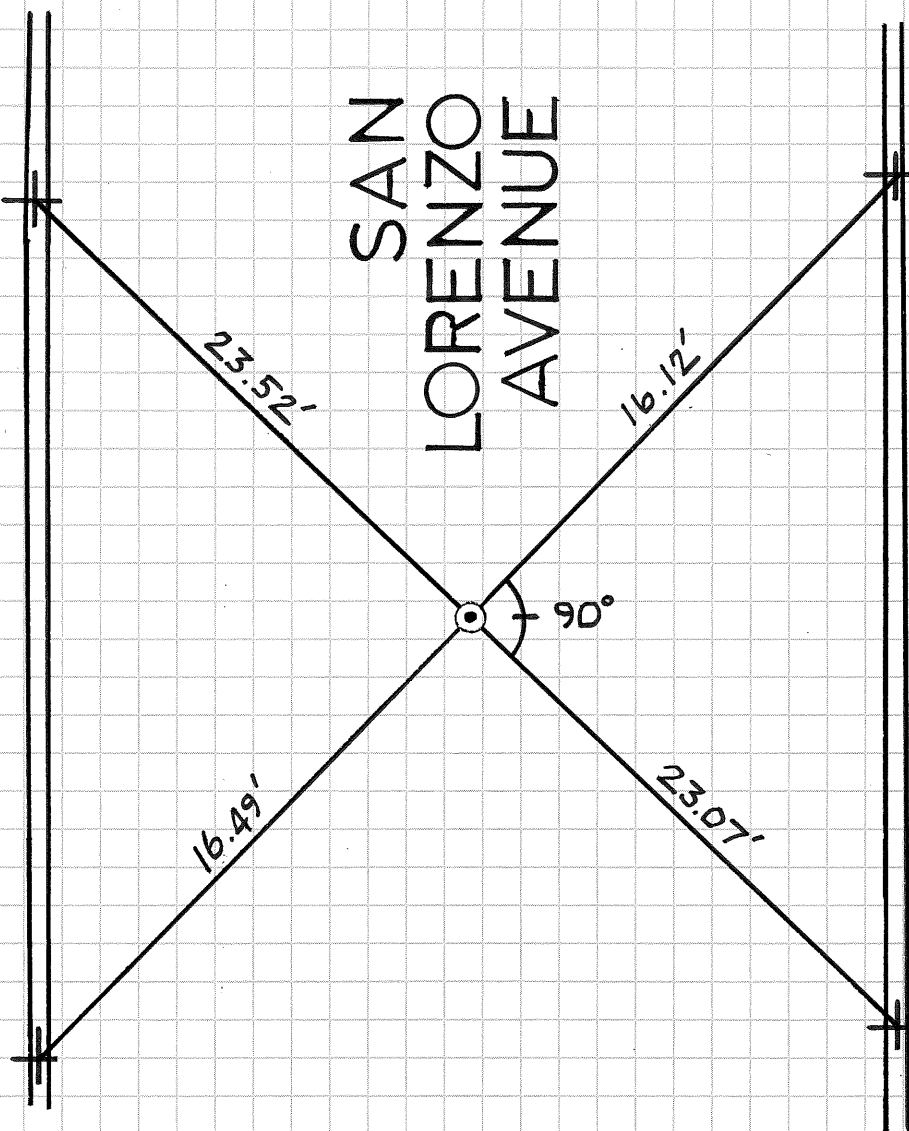
Signed Russell R. Penland, Jr. Title Deputy County Surveyor



County Surveyor's Comment _____

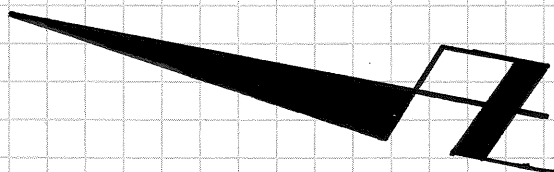
SCRIBED "X"
ON TOP OF
CURB
(TYPICAL)

SAN
LORENZO
AVENUE



LEGEND

- ⊙ FOUND PIN IN CONCRETE IN MONUMENT
WELL. AT $\frac{1}{2}$ SAN LORENZO AVENUE
AND 85' \pm WEST OF COLUSA.
CITY OF BERKELEY MONUMENT NO. 2460



NO SCALE