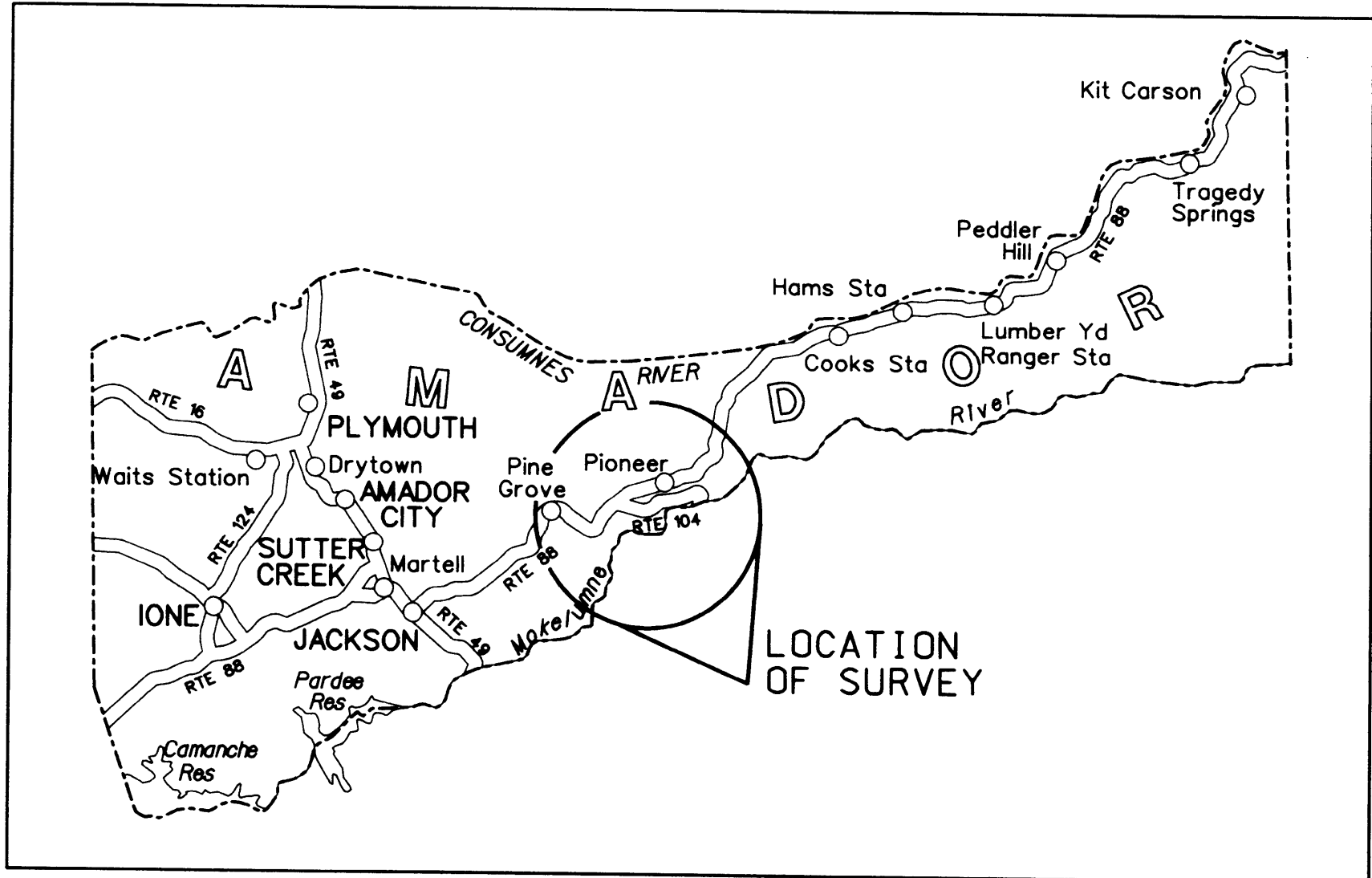


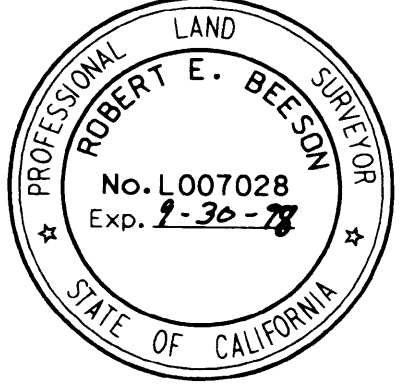
DIST	COUNTY	ROUTE	POST MILES TOTAL PROJECT	SHEET NO.	TOTAL SHEETS
10	AMA	88	23.6/36.0	1	5



SURVEYOR'S STATEMENT

THIS MAP CORRECTLY REPRESENTS A SURVEY MADE BY ME OR UNDER MY DIRECTION IN CONFORMANCE WITH THE REQUIREMENTS OF THE LAND SURVEYORS' ACT AT THE REQUEST OF THE CALIFORNIA DEPARTMENT OF TRANSPORTATION, DIST. 10 IN MARCH, 1997.

DATED THIS 3RD DAY OF July, 1997.



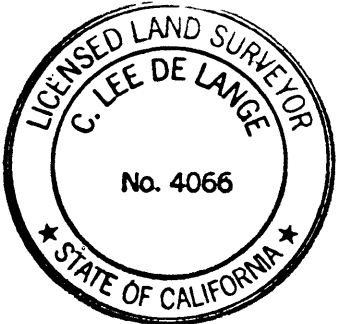
Robert E. Beeson
ROBERT E. BEESON LS 7028 LICENSE EXPIRATION
DATE: 9-30-98

COUNTY SURVEYOR'S STATEMENT

THIS MAP HAS BEEN EXAMINED IN ACCORDANCE WITH SECTION 8766 OF THE LAND SURVEYORS' ACT THIS 16 DAY OF July, 1997.

C. Lee DeLange
LEE DELANGE, LS 4066

COUNTY SURVEYOR OF AMADOR COUNTY
REGISTRATION EXPIRATION DATE: 6-30-2000



RECORDER'S STATEMENT

FILED THIS 22ND DAY OF July, 1997, AT 10:40 A.M.
IN BOOK 50 OF MAPS AND PLATS, AT PAGE 71,
AT THE REQUEST OF THE CALIFORNIA DEPARTMENT OF
TRANSPORTATION, DISTRICT 10.
NO FEE. filed

SERIAL No. 1997-005761

Sheldon D. Johnson
SHELDON D. JOHNSON, COUNTY CLERK/RECORDER
OF AMADOR COUNTY, CALIFORNIA

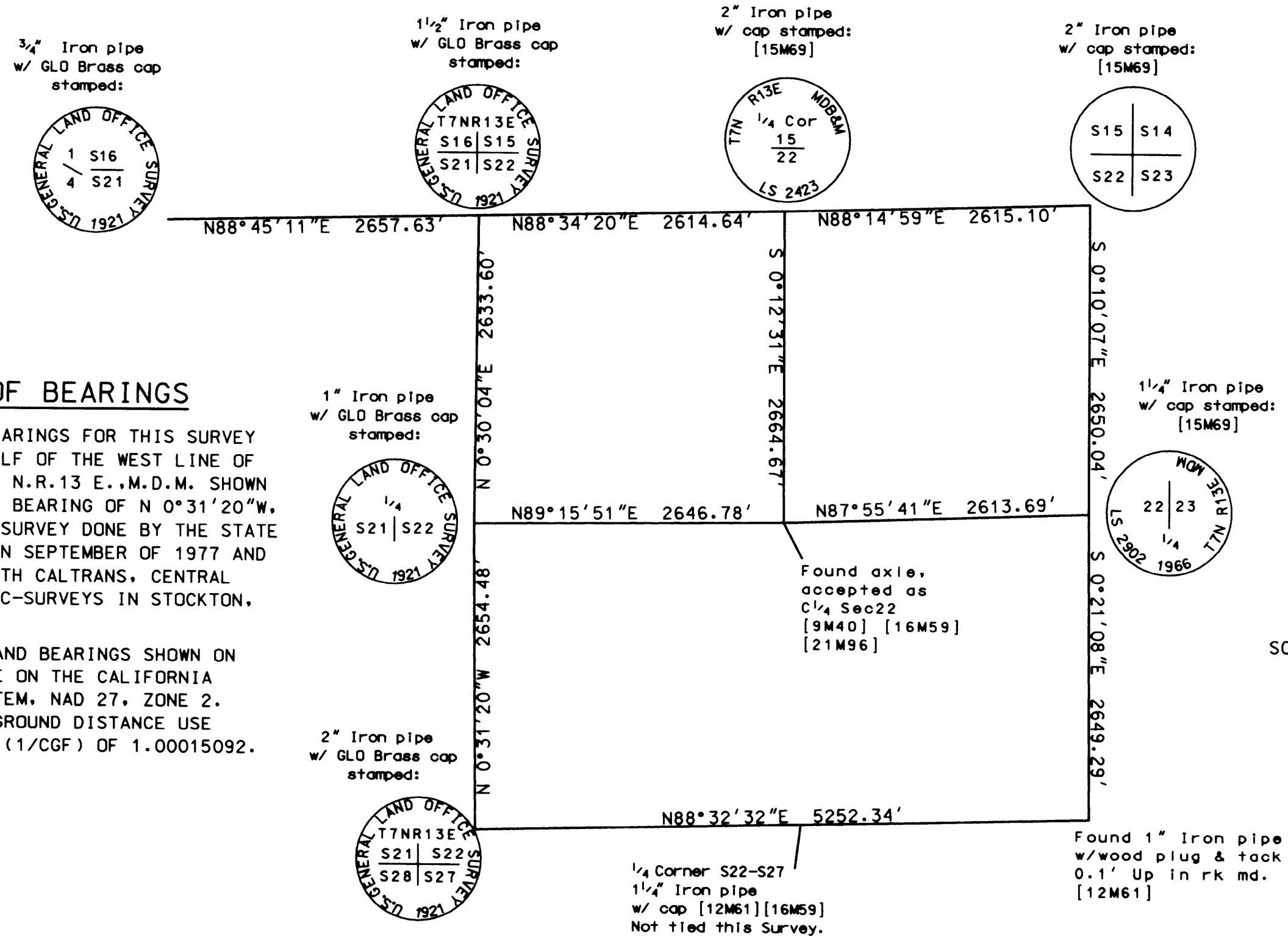
BY: Marilena Ornes
ASSISTANT/DEPUTY RECORDER

BASIS OF BEARINGS

THE BASIS OF BEARINGS FOR THIS SURVEY IS THE SOUTH HALF OF THE WEST LINE OF SECTION 22, T.7 N.R.13 E., M.D.M. SHOWN HEREON HAVING A BEARING OF N 0°31'20"W, ACCORDING TO A SURVEY DONE BY THE STATE OF CALIFORNIA IN SEPTEMBER OF 1977 AND KEPT ON FILE WITH CALTRANS, CENTRAL REGION, BRANCH C-SURVEYS IN STOCKTON, CALIFORNIA.

THE DISTANCES AND BEARINGS SHOWN ON THIS SURVEY ARE ON THE CALIFORNIA COORDINATE SYSTEM, NAD 27, ZONE 2. TO CONVERT TO GROUND DISTANCE USE A SCALE FACTOR (1/CGF) OF 1.00015092.

THE DISTANCES SHOWN HEREON ARE MEASURED GRID DISTANCES. DISTANCES SHOWN ENCLOSED IN A [R.] ARE RECORD DISTANCES CONVERTED TO GRID DISTANCE FOR COMPARATIVE PURPOSES USING A COMBINED GRID FACTOR (CGF) OF 0.99984910.



SCALE: 1" = 1000'

STATE OF CALIFORNIA
BUSINESS AND TRANSPORTATION AGENCY
DEPARTMENT OF TRANSPORTATION
DISTRICT 10, STOCKTON
RECORD OF SURVEY

SHOWING MONUMENTS FOUND AND SET IN A PORTION OF SECTIONS 21 & 22, TOWNSHIP 7 NORTH, RANGE 13 EAST, M.D.M. in the unincorporated territory of
AMADOR COUNTY, CALIFORNIA