

FILED IN THE OFFICE OF THE COUNTY CLERK OF THE COUNTY OF MONO, STATE OF CALIFORNIA  
THIS 5<sup>th</sup> DAY OF May, 1976

Ann M. Webb  
ANN M. WEBB  
COUNTY CLERK  
COUNTY OF MONO  
STATE OF CALIFORNIA

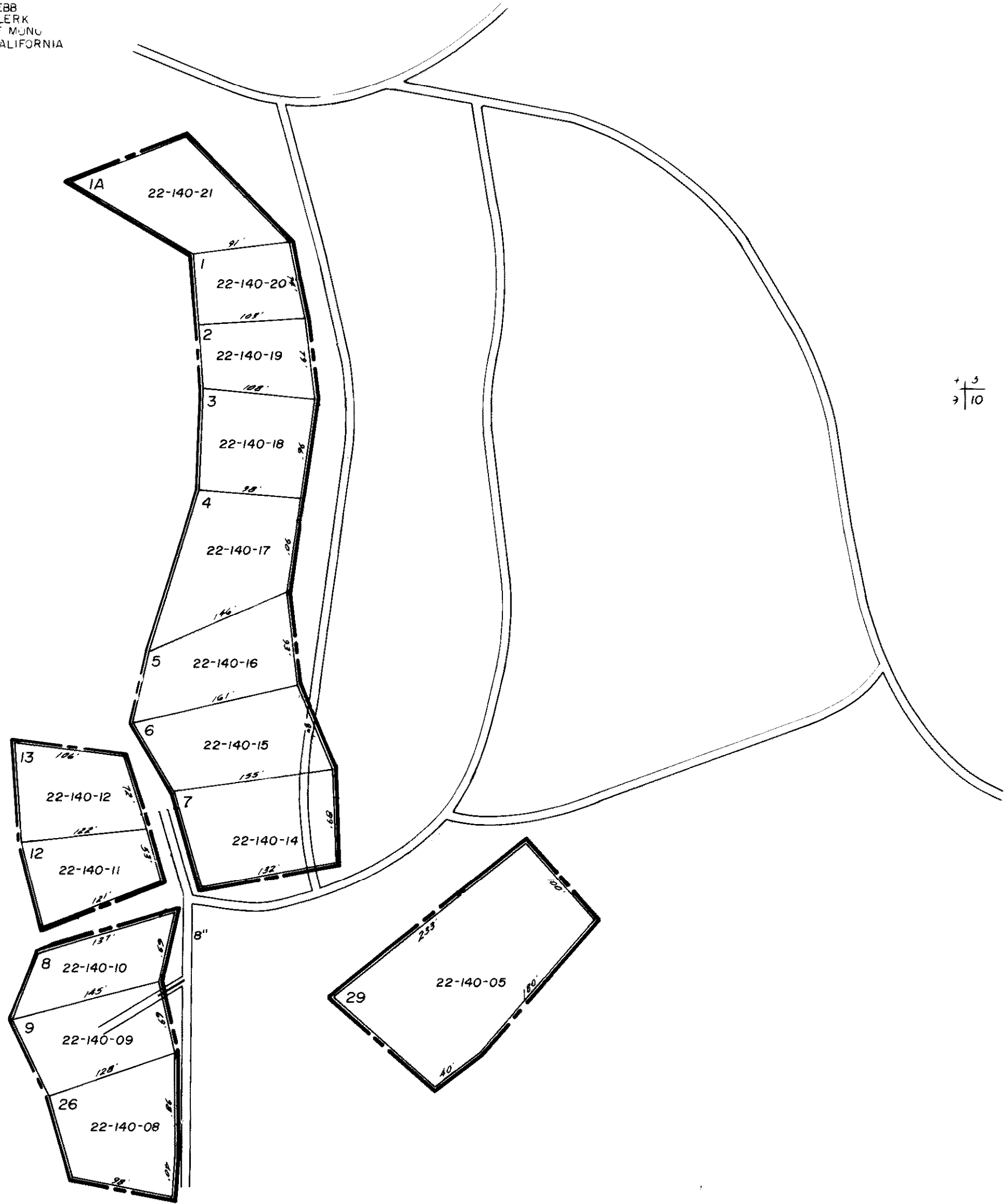
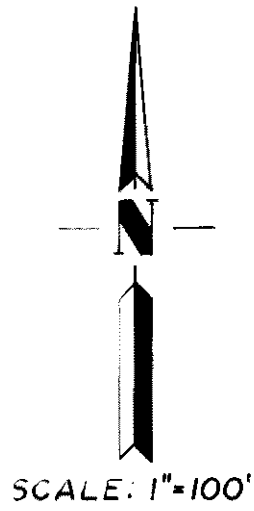
I HEREBY CERTIFY THAT THE WITHIN MAP SHOWING THE PROPOSED BOUNDARIES OF MAMMOTH  
LAKES BASIN SEWER ASSESSMENT DISTRICT NO. 1, MONO COUNTY, STATE OF CALIFORNIA,  
WAS APPROVED BY THE BOARD OF SUPERVISORS OF THE COUNTY OF MONO A REGULAR MEETING  
THEREOF, HELD ON THE 19<sup>th</sup> DAY OF August, 1975 BY ITS RESOLUTION  
NO. 75-101.

Ann M. Webb  
ANN M. WEBB  
COUNTY CLERK  
COUNTY OF MONO  
STATE OF CALIFORNIA

No. 4596

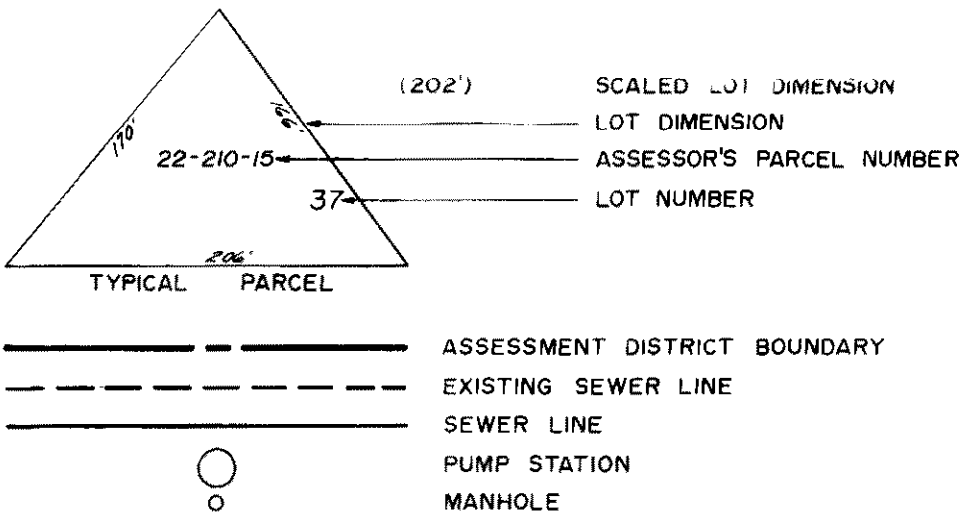
FILED THIS 5<sup>th</sup> DAY OF May, 1976 AT THE HOUR OF 10:15  
O'CLOCK A. M. IN BOOK 1, OF MAPS OF ASSESSMENT DISTRICTS AT PAGE 14-14-E  
IN THE OFFICE OF THE COUNTY RECORDER OF THE COUNTY OF MONO, STATE OF CALIFORNIA.

Ann M. Webb  
ANN M. WEBB  
COUNTY CLERK  
COUNTY OF MONO  
STATE OF CALIFORNIA



LOTS 1, 1A, 2 THROUGH 9, 12, 13, 26 AND 29,  
MILL CITY TRACT, SECTIONS 4 AND 9,  
T.4S., R.27E., M.D.M., INYO NATIONAL  
FOREST.

LEGEND



PROPOSED BOUNDARIES OF  
MAMMOTH LAKES BASIN SEWER ASSESSMENT DISTRICT NO. 1  
SANITARY SEWERAGE PROJECT  
MONO COUNTY, CALIFORNIA

GRAM/PHILLIPS ASSOCIATES, INC.  
MAMMOTH LAKES, CALIFORNIA

Date: October 1975

Sheet: 1 of 6

Document No. 1000-2001-10014