

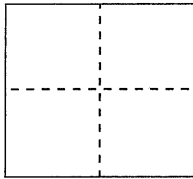
# CORNER RECORD

Document Number CR 3554 Bk 32 Pg 7

City of Oakland

County of Alameda, California

Brief Legal Description City of Oakland pin monument on Picardy Drive .



## CORNER TYPE

Government Corner ☐ Control ☒  
Meander ☐ Property ☐  
Rancho ☐ Other ☐

Date of Survey June 13th ,2008

## COORDINATES (Optional)

N. \_\_\_\_\_  
E. \_\_\_\_\_  
Zone \_\_\_\_\_ NAD27 ☐ NAD83 ☐  
NAD83 Epoch \_\_\_\_\_  
Elev. \_\_\_\_\_  
Vert. Datum: NGVD29 ☐ NAVD88 ☐  
Meas. Units: Metric ☐ Imperial ☐

Corner - Left as found ☒ Found and tagged ☐ Established ☐ Reestablished ☐ Rebuilt ☐

Identification and type of corner found: Evidence used to identify or procedure used to establish or reestablish the corner:

City of Oakland pin moument located on Picardy Drive South between lots 40 and 58 as shown in the  
subdivision map of Normandy Garden. The said monument is shown on City's monument index sheet # 124.

Data is on file in the City Land Surveyor's Office, City of Oakland

A description of the physical condition of the monument as found and as set or reset:

The monument is pin in a concrete post in a standard casting and lid and is in good condition.

## SURVEYOR'S STATEMENT

This Corner Record was prepared by me or under my direction in conformance with  
the Professional Land Surveyor's Act on 16 Jan. 09

Signed [Signature] P.L.S or R.C.E. No. 4700

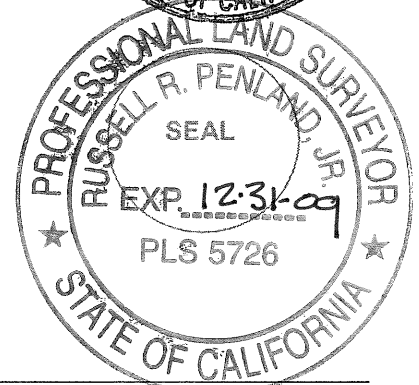
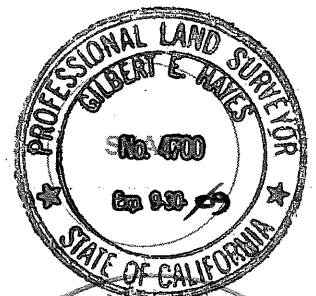
## COUNTY SURVEYOR'S STATEMENT

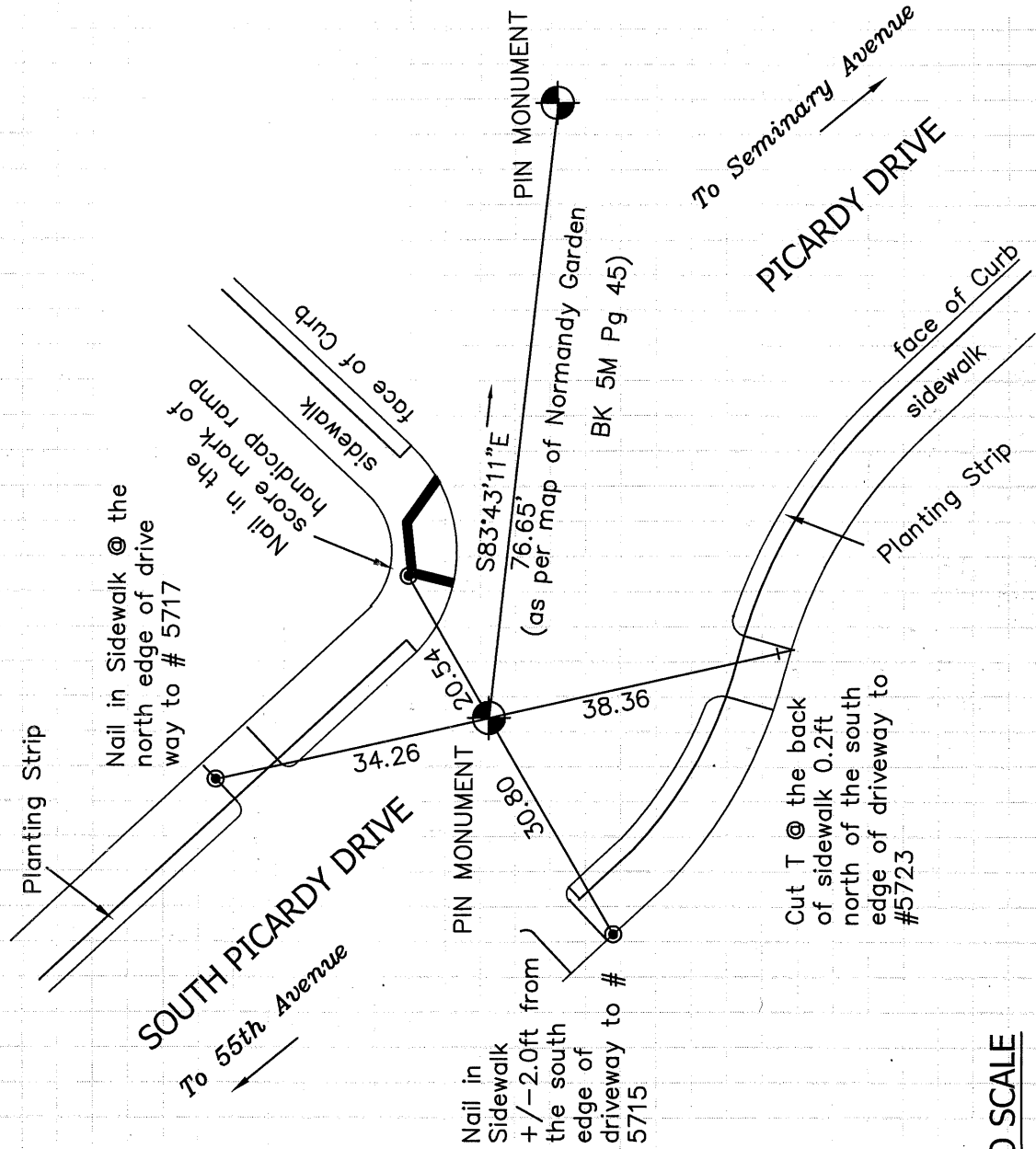
This Corner Record was received 12-24-2008  
and examined and filed 1-30-2009

Signed [Signature] P.L.S or R.C.E. No. 5726

Title COUNTY SURVEYOR

County Surveyor's Comment: \_\_\_\_\_





NOT TO SCALE