

Legend

- - Indicates a found survey monument as noted.
- - Indicates a set 1" I.P. tagged R.C.E. 13512

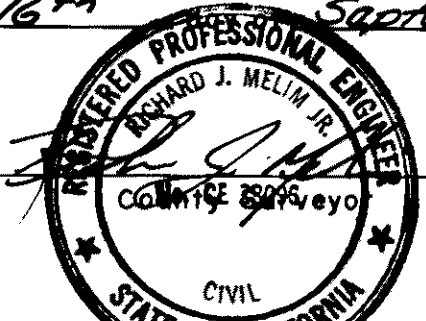
Basis of Bearings

The Bearing of S 89° 41' 35" W on the Southerly line of the Southwest Quarter of Section 13, T. 5 S., R. 30 E., M.D.M., as recorded in Volume 2, Page 64 of Record of Survey Maps, in the County of Mono, California, was used as the Basis of Bearings for this map.

This map correctly represents a survey made by me, or under my direction in conformance with the requirements of the Land Surveyor's Act at the request of Mono County, in August 1980, No. C13512

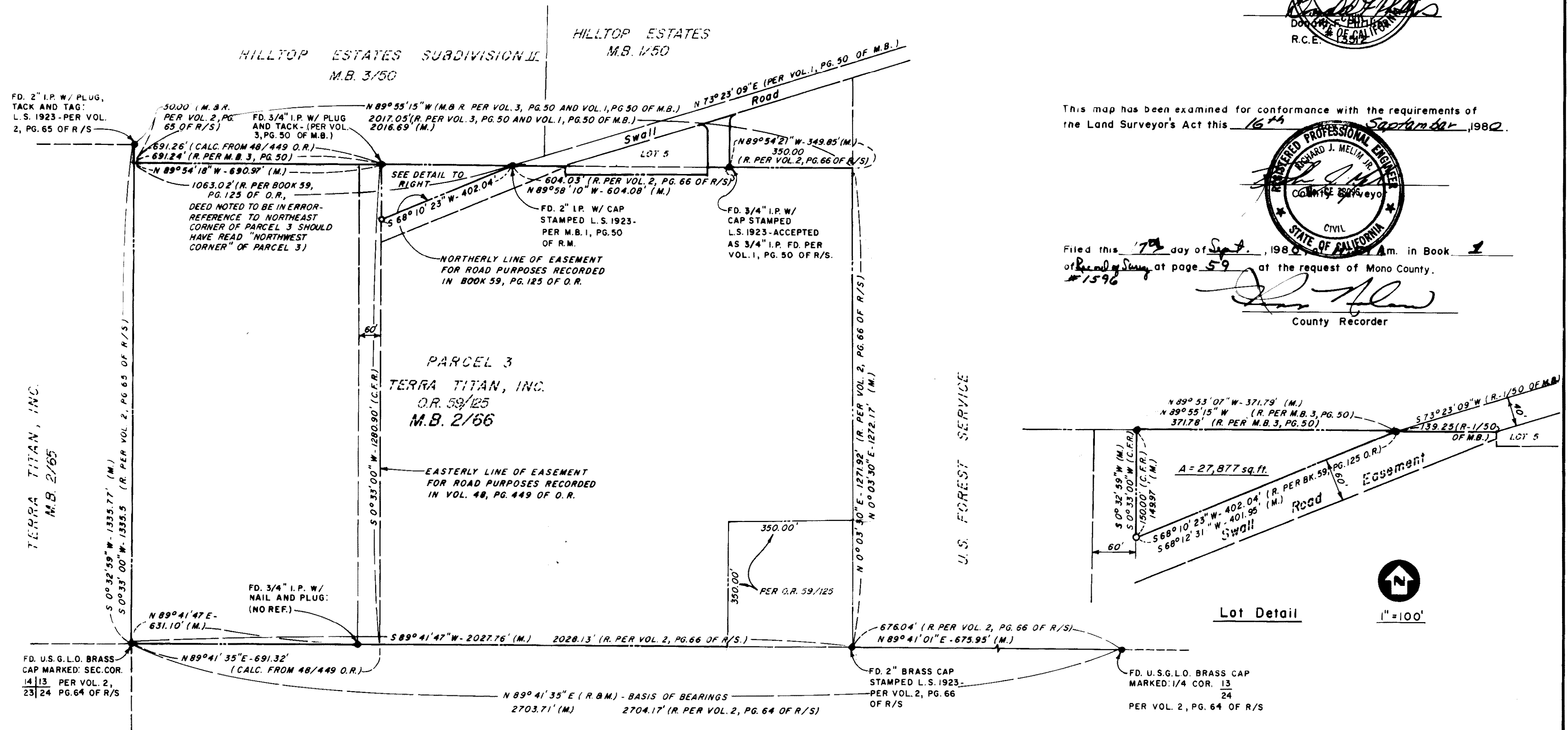


This map has been examined for conformance with the requirements of the Land Surveyor's Act this 16th day of September, 1982.



Filed this 7th day of Sept., 1982, at 10:00 A.M. in Book 1 of Record of Survey Maps at page 59 at the request of Mono County.

County Recorder



R. J. WILSON

M.B. 2/64



1" = 200'

RECORD OF SURVEY NO. 37-17
IN THE COUNTY OF MONO, STATE OF CALIFORNIA
BEING A SURVEY OF A PORTION OF THE S.W. 1/4, SEC. 13,
T. 5 S., R. 30 E., M.D.M., AND A PORTION OF LOT 5, HILLTOP
ESTATES SUBDIVISION IN THE COUNTY OF MONO, CALIFORNIA.