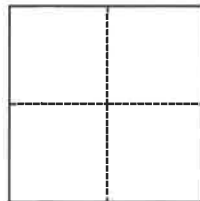


# CORNER RECORD

Agency Index BK 140 PG 73  
Document Number CR 15394

City of Oakland (APN 29-1072-24-3) County of Alameda, California  
Brief Legal Description Monument in the Herrier Street, near 3306 Herrier Street

## CORNER TYPE



- ☐ Government Corner ☒ Control  
☐ Meander ☐ Property  
☐ Rancho ☐ Other

Date of Survey June 1, 2021

## COORDINATES (Optional)

N.                      E.                       
Elevation                       
Units ☐ Metric ☒ U.S. Survey Foot  
Horizontal Datum                       
Zone                      Epoch Date                       
Vertical Datum                       
☐ Complies with Public Resources Code §§8801-8819  
☐ Complies with Public Resources Code §§8890-8902

PLS Act Ref.: ☐ 8765(d) ☒ 8771 ☐ 8773 ☐ Other:  
Corner/  
Monument: ☒ Left as found ☐ Established ☐ Rebuilt ☒ Pre-Construction  
☐ Found and tagged ☐ Reestablished ☒ Referenced ☐ Post-Construction

Narrative of corner identified and monument as found, set, reset, replaced, or removed:

☒ See sheet #2 for description(s):

Found monument that could be damaged or destroyed by planned water line construction project. Monument was referenced as shown on page 2. The purpose of this Corner Record is to preserve possible evidence only; no attempt was made to determine the relationship to property, centerline, or right of way lines.

Reference EBMUD CR Book C, Page 18 (Laquian/Chou)

## SURVEYOR'S STATEMENT

This Corner Record was prepared by me or under my direction in conformance with

the Professional Land Surveyors' Act on August 24, 2021

Signed [Signature] P.L.S. or R.C.E. No. 8889



## COUNTY SURVEYOR'S STATEMENT

This Corner Record was received

and examined and filed SEP 02 2021

Signed D. Ian Wilson P.L.S. or R.C.E. No. 7010

Title ALAMEDA COUNTY SURVEYOR

County Surveyor's Comment



OAKLAND

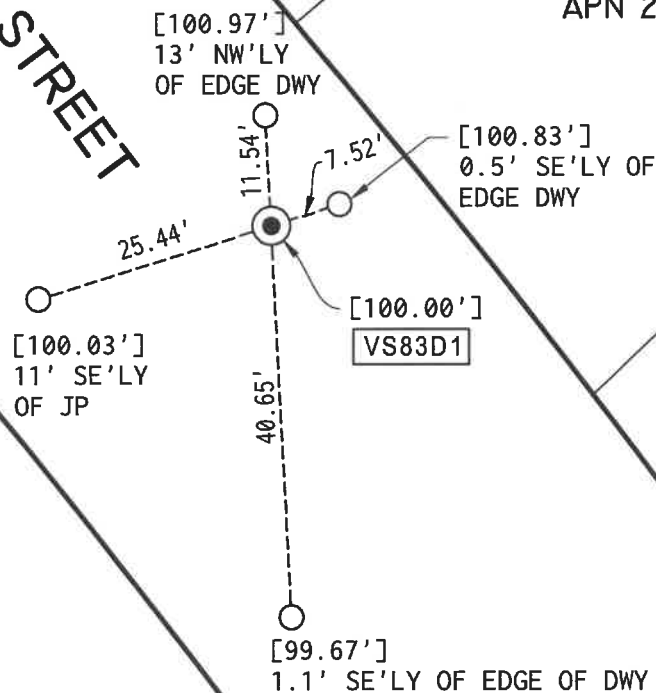
PLAT OF

ALAMEDA COUNTY

THE PART OF THE  
RANCHO SAN ANTONIO  
FINALLY CONFIRMED  
TO ANTONIO MARIA  
PERALTA, ETAL.  
A M 669

HERRIER STREET

3306 HERRIER STREET  
APN 29-1072-24-3



SCALE  
1"=20'

## LEGEND

- FOUND 1/4" PIN IN CONCRETE IN STANDARD MONUMENT WELL, 1' BELOW GRADE
- SET CONCRETE ANCHOR NAIL AND 1-1/2" ALUMINUM WASHER, STAMPED "EBMUD MON RP" IN TOP OF CURB
- [ ] ASSUMED ELEVATION (MEASURED USING A LEICA DIGITAL LEVEL)

AA##A# ALAMEDA COUNTY MONUMENT I.D.

ADDRESS: 3306 HERRIER STREET

APN: 29-1072-24-3

