

# CORNER RECORD

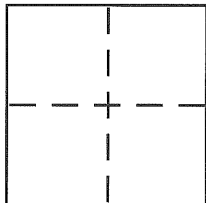
BK 52 PG 14

Document Number CR5552

City of BERKELEY

County of ALAMEDA, California

Brief Legal Description LOT 20, BLOCK 1 (26 M 13)



## CORNER TYPE

Government Corner ☐ Control ☐  
 Meander ☐ Property ☒  
 Rancho ☐ Other ☐  
 Date of Survey APRIL 12, 2013

## COORDINATES (Optional)

N. \_\_\_\_\_  
 E. \_\_\_\_\_  
 Zone \_\_\_\_\_ NAD27 ☐ NAD83 ☐  
 NAD83 Epoch \_\_\_\_\_  
 Elev. \_\_\_\_\_  
 Vert. Datum: NGVD29 ☐ NAVD88 ☐  
 Meas. Units: Metric ☐ Imperial ☐

Corner - Left as found ☐ Found and tagged ☐ Established ☒ Reestablished ☐ Rebuilt ☐

Identification and type of corner found: Evidence used to identify or procedure used to establish or reestablish the corner:

MONUMENTS AS SHOWN ON CITY OF BERKELEY  
ANNOTATED MAP OF NORTHBRAE

A description of the physical condition of the monument as found and as set or reset:

SEE REVERSE

## SURVEYOR'S STATEMENT

This Corner Record was prepared by me or under my direction in conformance with the Land Surveyor's Act on MAY 7 2013

Signed [Signature] P.L.S. or P.C.E. No. 8951

## COUNTY SURVEYOR'S STATEMENT

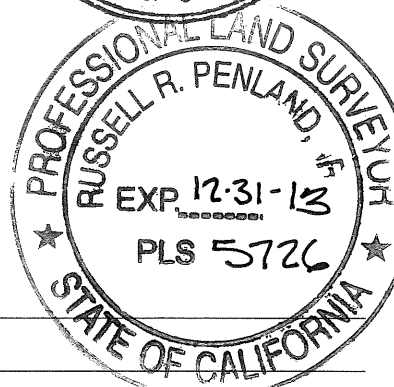
This Corner Record was received 5-9-13

and examined and filed 8-5-13

Signed [Signature] P.L.S. or P.C.E. No. 5726

Title COUNTY SURVEYOR

County Surveyor's Comment \_\_\_\_\_



# CORNER RECORD

LOT 20, BLOCK 1

NORTHBRAE STATION TRACT (26 M 13)  
BERKELEY, ALAMEDA COUNTY, CALIFORNIA

ASSESSORS PARCEL 061-2603-023

APRIL 12, 2013

SCALE: 1" = 30'

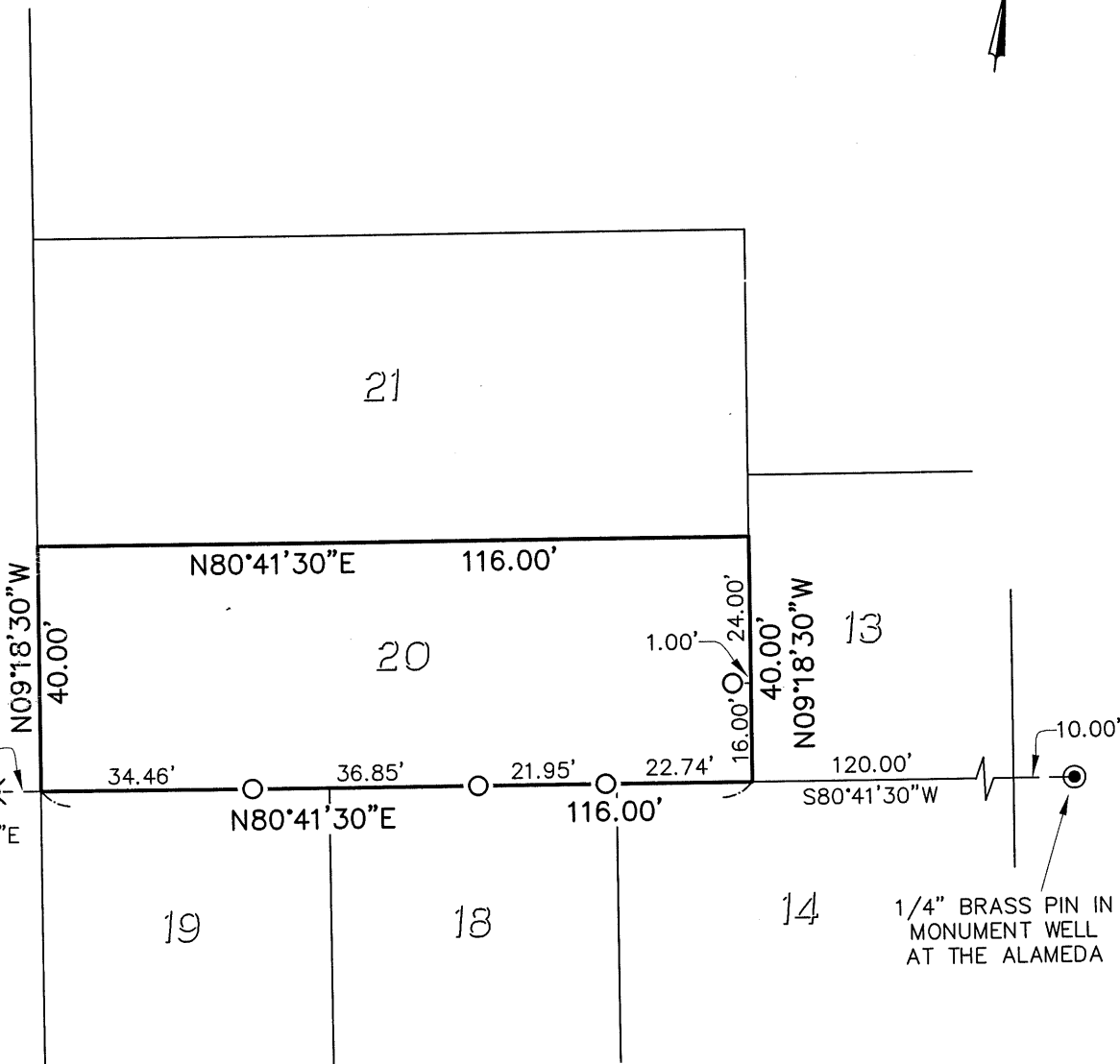


GK16A5

MONUMENT AT  
SOLANO AVENUE

FRESNO AVENUE (70' WIDE)

N09°18'30"W 723.85'



PX85H3

1/4" BRASS PIN IN  
MONUMENT WELL  
AT THE ALAMEDA

## LEGEND

- FOUND 2" BRASS DISC MONUMENT IN CITY  
MONUMENT WELL, UNLESS OTHERWISE NOTED
- SET 5/8" REBAR WITH PLASTIC CAP LINS LS 8951
- ✕ SET NAIL AND 3/4" BRASS TAG LINS LS 8951

AA##A# ALAMEDA COUNTY MONUMENT ID

MORAN ENGINEERING, INC.

BERKELEY, CALIFORNIA

F.B. 1437

FRESNO-CR.DWG

JOB NO. 13-8540