

SCALE: 1" = 60'

UNDERGROUNDING UTILITY DISTRICT 2013-01
TOWN OF MAMMOTH LAKES
COUNTY OF MONO
STATE OF CALIFORNIA
UNDERGROUNDING DISTRICT BOUNDARY-0.80 AC±

FILED IN THE OFFICE OF THE TOWN CLERK OF THE TOWN OF MAMMOTH LAKES,
THIS 23 DAY OF July, 2013.

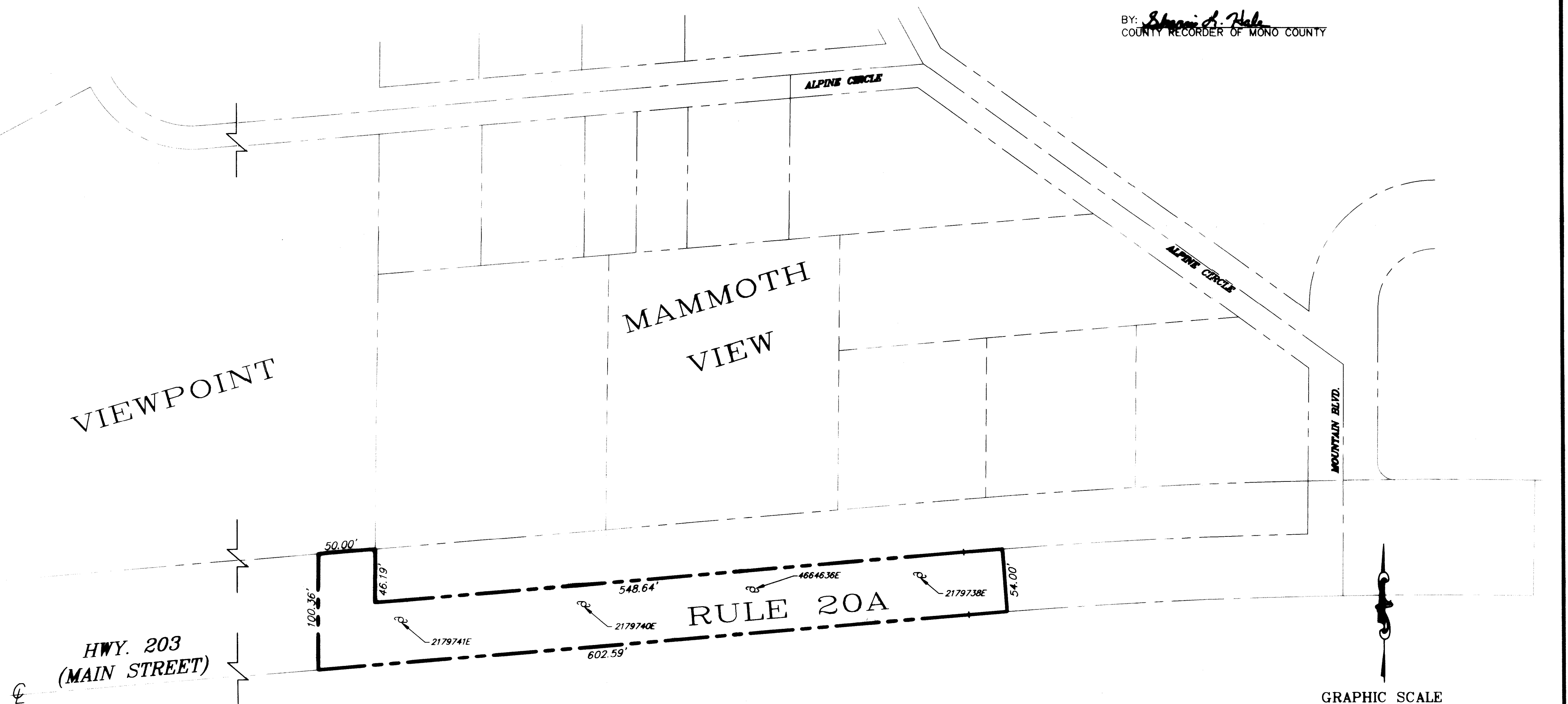
Ray Jarvis
RAY JARVIS
DIRECTOR OF PUBLIC WORKS

I HEREBY CERTIFY THAT THE WITHIN MAP SHOWING THE PROPOSED BOUNDARIES
OF UNDERGROUNDING DISTRICT 2013-01 IN THE TOWN OF MAMMOTH LAKES,
COUNTY OF MONO, STATE OF CALIFORNIA, WAS APPROVED BY THE TOWN
COUNCIL OF THE TOWN OF MAMMOTH LAKES AT A REGULAR MEETING THEREOF,
HELD ON THIS 14 DAY OF August, 2013, BY IT'S ORDINANCE
NO. 13-07

Jamie Gray
JAMIE GRAY
TOWN CLERK, TOWN OF MAMMOTH LAKES

FILED THIS 13 DAY OF August, 2013 AT THE HOUR OF 2 O'CLOCK
P.M. IN BOOK 2 OF MAPS OF ASSESSMENT AND COMMUNITY FACILITIES
DISTRICTS AT PAGE 77 AND AS INSTRUMENT NO. 20130494 IN THE OFFICE
OF THE COUNTY RECORDER MONO COUNTY, STATE OF CALIFORNIA.

BY: Sharon L. Hale
COUNTY RECORDER OF MONO COUNTY



NOTE: THERE ARE TWO OVERHEAD CROSSINGS OVER THE
HIGHWAY WITHIN THE RULE 20A BOUNDARY WHICH
WILL BE REMOVED.

GRAPHIC SCALE



(IN FEET)
1 inch = 60 ft.