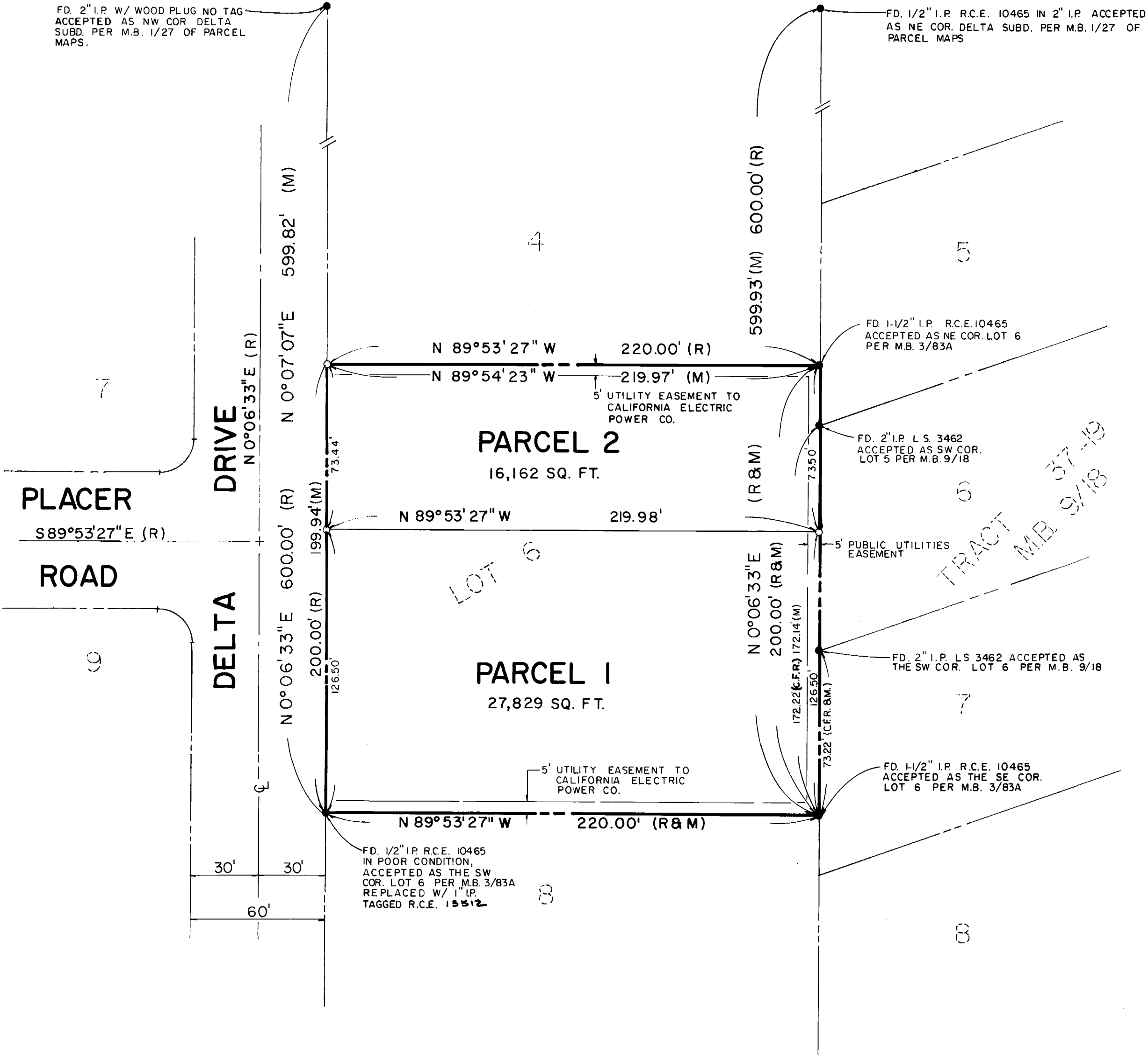


PARCEL MAP NO. 37-93

IN THE COUNTY OF MONO, STATE OF CALIFORNIA
BEING A SUBDIVISION OF LOT 6, DELTA SUBDIVISION
AS RECORDED IN BOOK 3, PAGE 83-A OF RECORD MAPS,
COUNTY OF MONO, STATE OF CALIFORNIA, SEC., 35,
T.4 S., R.29 E., M. D. M.

LEGEND

- - INDICATES FOUND SURVEY MONUMENT AS NOTED
- - INDICATES SET 1" I.P. R.C.E. 13512
- (R)- INDICATES RECORD BEARING OR DISTANCE
PER MAP BOOK 3, PAGE 83A
- (C.F.R.)- INDICATES A BEARING OR DISTANCE CALCULATED
FROM RECORD INFORMATION



Basis of Bearings

The record bearing of N 0°06'33" E of
the east line of Delta Subdivision as
shown on the map thereof recorded
in Book 3, Page 83A of Record Maps
was used as the basis of bearings
shown on this map.

27-M-1042
Page 81-7