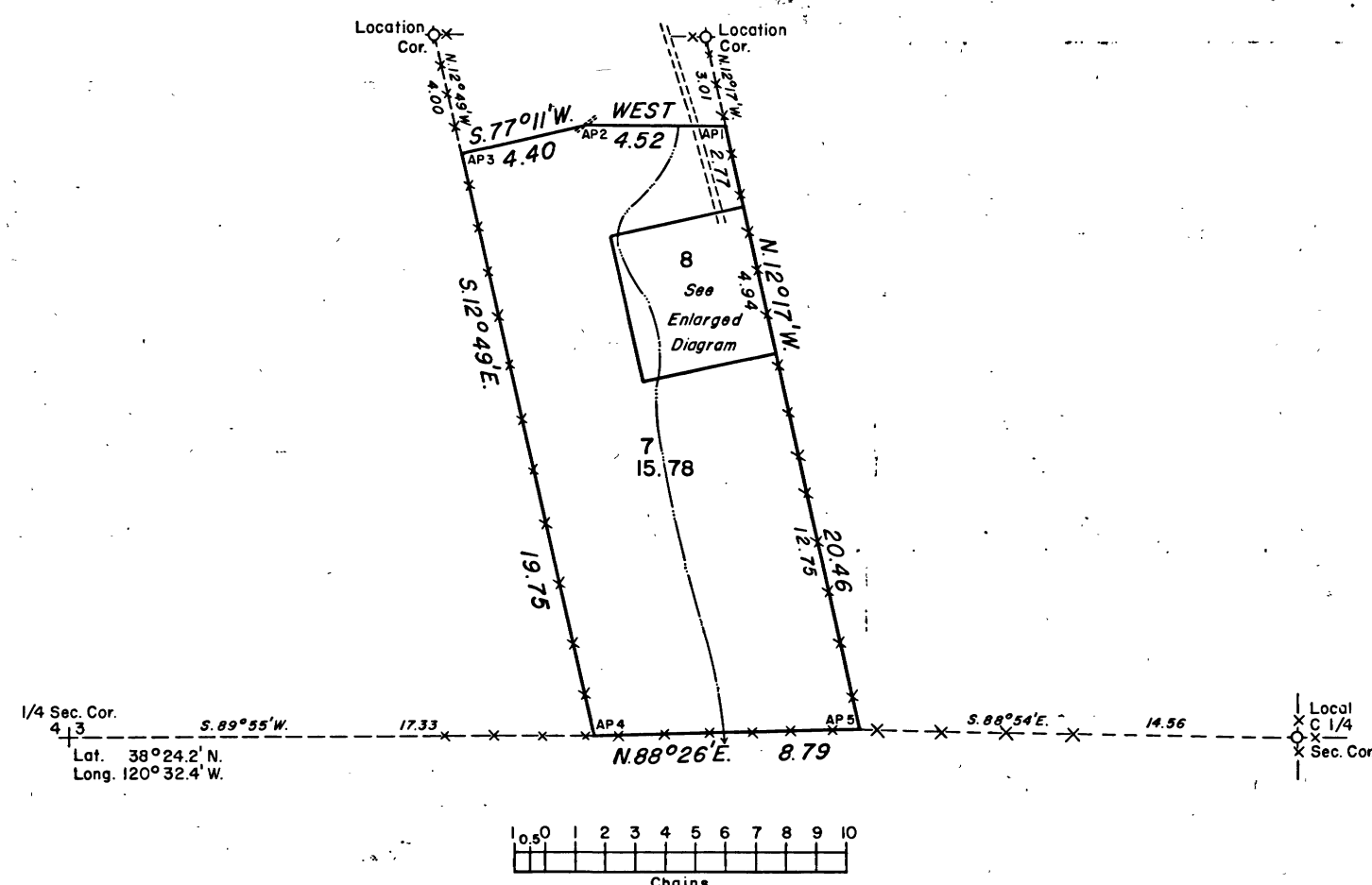
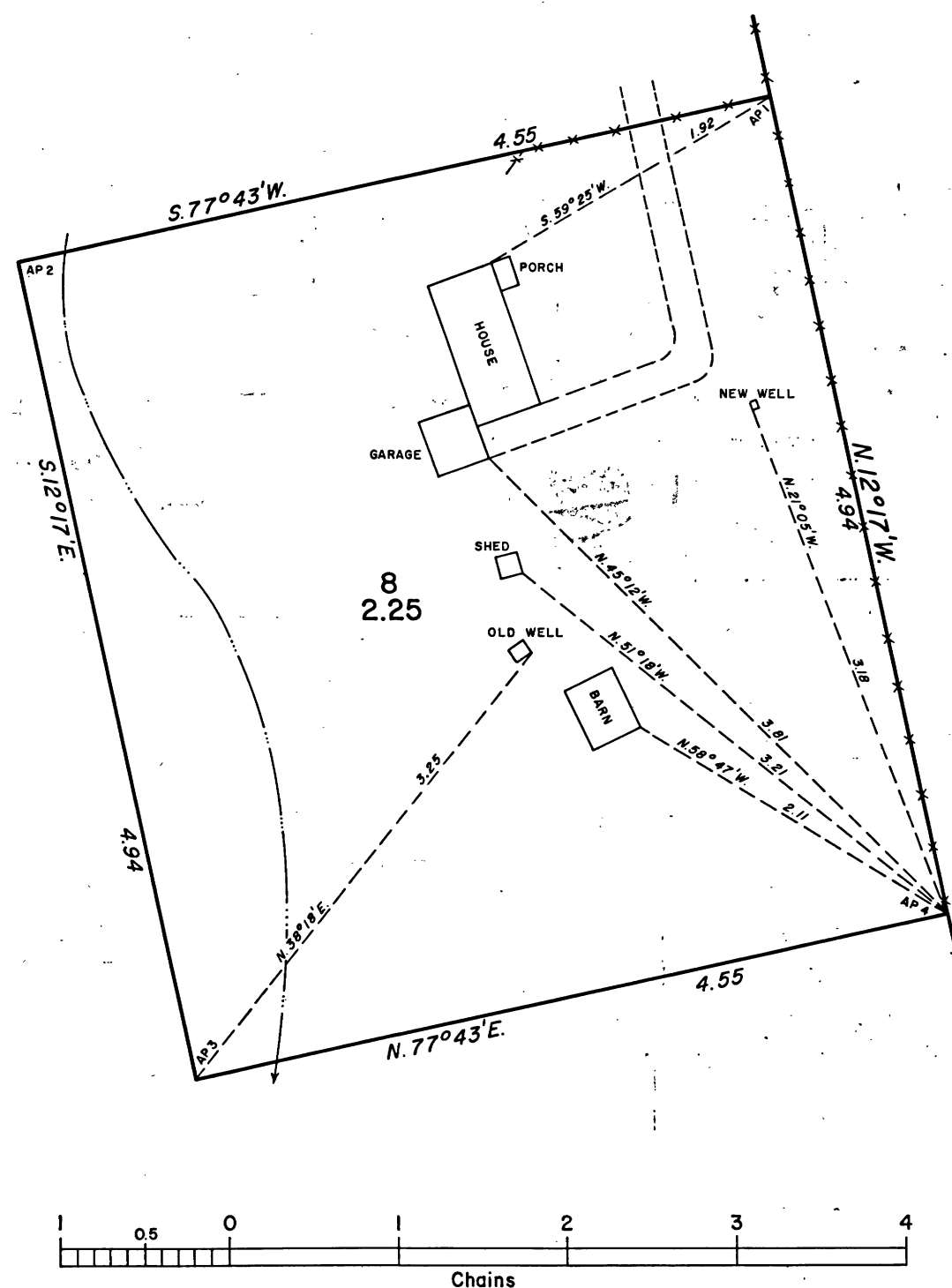


TOWNSHIP 6 NORTH, RANGE 13 EAST, OF THE MOUNT DIABLO MERIDIAN, CALIFORNIA.

DEPENDENT RESURVEY AND SURVEY



ENLARGED DIAGRAM



A history of surveys is contained in the field notes.

This plat represents the dependent resurvey of the segregation survey of the San Antonio Quartz Mine as shown on the diagram dated November 24, 1891, designed to restore the corners in their true original locations according to the best available evidence, and the metes and bounds survey of Lot 8, in section 3, T. 6 N., R. 13 E., Mount Diablo Meridian, California. The area formerly occupied by this claim is now designated as Lots 7 and 8.

These surveys were executed by Kenneth E. Sullivan, Jr., Cadastral Surveyor, October 6, 1976 to October 23, 1976, under Supplemental Special Instructions No. 1, dated June 18, 1974 and approved June 20, 1974, for Group No. 648, California.

UNITED STATES DEPARTMENT OF THE INTERIOR
 BUREAU OF LAND MANAGEMENT
 Denver, Colorado September 19, 1979

This plat is strictly conformable to the approved field notes, and the survey, having been correctly executed in accordance with the requirements of law and the regulations of this Bureau, is hereby accepted.

For the Director

[Signature]

Chief, Cadastral Survey
 Examination & Approval Staff